

From the  
**Anvil**<sup>®</sup>  
*www.fromtheanvil.co.uk*



**THE COLLECTION**

---

**ISSUE SEVEN**

---

**UPDATES &  
NEW PRODUCTS**

*Issue Seven - Updates & New Products*

## INTRODUCTION

---

*Welcome to our latest 'From the Anvil' catalogue where we have combined over seventy brand new exclusive items and a range of new finishes for some of our existing products to offer you the complete ironmongery solution for your entire home.*

*A number of items have been introduced throughout the brochure and they have also been included in a section of completely new products at the back of this 'Issue Seven - Updates & New Products'*

*We have been designing and making our products in the traditional way using forged steel, combining strength with beauty for many years. Each piece is hand crafted giving you the opportunity to buy ironmongery that is individual rather than mass produced and giving a wider availability for all.*

*Issue Seven*

# CONTENTS

PRODUCT FINISHES - *Page 4-5*

HINGES - *Page 6-15*

THUMBLATCHES & LATCHES - *Page 16-23*

RING TURNS - *Page 24-25*

LEVER HANDLES - *Page 26-38*

PULL HANDLES - *Page 39-45*

RIM & MORTICE KNOBS - *Page 46-49*

RIM LOCKS & BOX LOCKS - *Page 50-53*

ESCUTCHEONS & THUMBTURNS - *Page 54-56*

DOOR KNOCKERS - *Page 57-58*

LETTERPLATES & COVERS - *Page 59-61*

DOOR GRILLS, NAILS & STUDS - *Page 62-64*

BOLTS - *Page 65-69*

HOOKS - *Page 70-74*

CUPBOARD KNOBS, LATCHES & TURNS - *Page 75-80*

WINDOW FASTENERS & ACCESSORIES - *Page 81-85*

WINDOW STAYS - *Page 86-90*

WINDOW ESPAGNOLETTES - *Page 91-96*

CURTAIN POLE FURNITURE - *Page 97-99*

LOCKS, LATCHES & ACCESSORIES - *Page 100-104*

ELECTRICAL ACCESSORIES - *Page 105-106*

NEW PRODUCTS - *Page 107-114*

GENERAL MAINTENANCE, CARE GUIDE & SPARES - *Page 115*

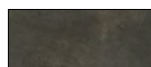
SUPPLY POLICY & CONDITIONS OF SALE - *Page 116*

INDEX - *Page 117-119*

*Copyright - From The Anwil*

# FROM THE ANVIL THE COLLECTION - ISSUE SEVEN PRODUCT FINISHES

*Finish symbols are displayed under each product to denote specific finishes available for each piece.*



BEESWAX

## **Beeswax Finish - (For Internal Use Only)**

The beeswax finish is the most authentic finish for steel. When our highly skilled blacksmiths have finished forging this product the colours left in the steel range from blue to deep red ochre. To preserve these beautiful colours and the texture from the hammer and anvil, we apply pure beeswax. This gives a subtle, matt richness to the metal and offers excellent protection when products are fitted internally and properly maintained. To bring out the best in our original Beeswax Finish we advise that before installation it is given a buff with a soft cloth.

Using maintenance wax will help restore the finish and give protection to this product. Buffing with a cotton cloth will remove the white bloom. If surface rust occurs, rub with 00 grade wire wool and apply Anvil Maintenance Wax with a rag. All moving parts should be oiled prior to fitting and periodically afterwards.

**Warning:** The chemicals in wet plaster will rust this product. Always fit ironmongery when plaster is fully dry.



BLACK

## **Black Finish - (For Internal or External Use)**

Our traditional satin Black Finish is baked in a high-temperature oven giving it an attractive, durable and corrosion-resistant finish which is low maintenance and can be used internally or externally. It is resistant to moisture so can be used in bathrooms and damp conditions.

We recommend that the ironmongery is wiped with a lightly oiled cloth from time-to-time. This will remove harmful deposits and restore it to its original condition. All moving parts should be oiled prior to fitting and periodically afterwards.

Always use a pilot drill and rub screw with candle wax before fitting.



PEWTER  
PATINA

## **Pewter Patina Finish - (For Internal or External Use)**

This finish is elegant and beautifully highlights the texture of the steel. Stylish and modern, it is equally suited to a contemporary home as well as a period property.

It has excellent anti-corrosion properties and we recommend that the ironmongery is wiped with a lightly oiled cloth once a month. This will remove harmful deposits and restore it to its original condition. Never use any form of metal cleaner or aerosol spray. All moving parts should be oiled prior to fitting and periodically afterwards.

The screws supplied with this product are finished individually so please take care when fitting. Always use a pilot drill and rub screw with candle wax before fitting.



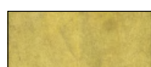
BRONZE

## **Bronze Finish - (For Internal or External Use)**

This range is coated with a permanent bronze finish which will always look at its best for years to come and is completely weatherproof. This finish is elegant and beautifully highlights the texture of the steel. Stylish and modern, it is equally suited to a contemporary home as well as a period property.

It has excellent anti-corrosion properties and we recommend that the ironmongery is wiped with a lightly oiled cloth once a month. This will remove harmful deposits and restore it to its original condition. Never use any form of metal cleaner or aerosol spray. All moving parts should be oiled prior to fitting and periodically afterwards.

The screws supplied with this product are finished individually so please take care when fitting. Always use a pilot drill and rub screw with candle wax before fitting.



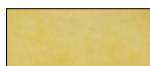
ANTIQUÉ  
BRASS

## **Antique Brass Finish - (For Internal or External Use)**

All of our Antique Brass products are cast from high quality solid brass and have been manufactured to the highest standards. This finish has been treated to speed up the natural tarnishing process which produces the antique feel of the product. It is burnished making it smooth in appearance and is used as an alternative finish where a highly polished surface is not desired.

The finish is un-lacquered, will tarnish naturally and therefore the aged patina will become darker with time. If you require a semi gloss finish, it can be achieved by using Brasso.

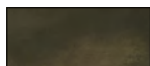
Always use a pilot drill and rub screw with candle wax before fitting.

POLISHED  
BRASS**Polished Brass Finish - (For Internal or External Use)**

All of our Polished Brass products are manufactured to the highest standards. All products are un-lacquered so to retain the original finish, regular polishing with a good quality metal polish is essential. However, if the intention is to allow the surface to age through oxidization, no attention needs to be given. Over time the brass will acquire a darker and more aged patina.

Always use a pilot drill and rub screw with candle wax before fitting.

**Warning:** The chemicals in wet plaster will rust this product. Always fit ironmongery when plaster is fully dry.

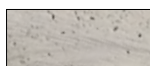


IRON

**Iron Finish - (For Internal or External Use)**

This product is made from Iron which shows off the natural beauty and texture of the metal. The item is cast and dressed giving it a tactile finish. This product will show off the natural beauty and texture of the metal. It is protected from weather and high moisture areas by a clear powder coating process which also gives it its colour. This finish provides an attractive, durable and corrosion resistant coating which will last for many years.

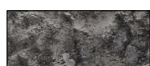
Always use a pilot drill and rub screw with candle wax before fitting.

NATURAL  
SMOOTH**Natural Smooth Finish - (For Internal Use Only)**

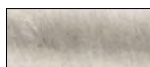
A natural cast iron, finished with a clear matt lacquer which produces a beautifully textured look and feel. This product is only intended for internal use. If fitted externally i.e in an enclosed porch or bathroom it will need to be treated with Anvil Maintenance Wax periodically.

Always use a pilot drill and rub screw with candle wax before fitting.

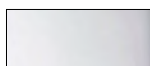
**Warning:** The chemicals in wet plaster will rust this product. Always fit ironmongery when plaster is fully dry.

NATURAL  
TEXTURED**Natural Textured Finish - (For Internal Use Only)**

A natural cast iron, finished with a clear matt lacquer which produces a beautifully textured look and feel. These products are only intended for internal use or when used in a protected area like in an enclosed porch but need to be waxed periodically.

ANTIQUE  
PEWTER**Antique Pewter Finish - (For Internal or External Use)**

This Antique Pewter finish is applied to the product and has excellent anti-corrosion properties. Periodic wiping with a lightly oiled cloth will further help to preserve the beauty of this finish.

POLISHED  
CHROME**Polished Chrome Finish - (For Internal or External Use)**

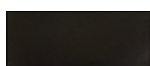
A mirror finished, chrome plate applied to either solid brass or steel.

BRUSHED  
SATIN CHROME**Brushed Satin Chrome Finish - (For Internal or External Use)**

A satin chrome finish which has a brushed effect running down the product..

POLISHED  
NICKEL**Polished Nickel Finish - (For Internal or External Use)**

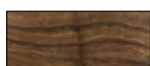
A highly polished finish with a nickel plating applied to a solid brass substrate. Nickel is similar to the polished chrome (silver) finish but with a slightly warmer tone. An unlaquered finish because nickel will not tarnish.



EBONY

**Ebony - (For Internal or External Use)**

Our Ebony finish products have a rich, dark look and feel for a very distinctive quality. The material has a very high density and fine texture which gives a very smooth finish. Can be polished or waxed to maintain the vibrance of the wood and to give overall protection. Designed to be used internally but can also be used externally if maintained with Anvil wax.



ROSEWOOD

**Rosewood - (For Internal or External Use)**

Our Rosewood products are strong and heavy with a richly hued reddish colour and much darker veining. Can be polished or waxed to maintain the vibrance of the wood and to give overall protection. Designed to be used internally but can also be used externally if maintained with Anvil wax.



## HINGES

PENNY END T HINGES - *Page 7-8*

ARROW HEAD T HINGES - *Page 9-11*

BUTT HINGES & HINGE FRONTS - *Page 12*

H & HL HINGES - *Page 13*

BUTTERFLY HINGES - *Page 14*

SHUTTER & ORNATE HINGES - *Page 15*

*From The Anvil - Door Furniture*

# PENNY END T HINGES



33010 (18" T Hinge)

## 22" T HINGE

OVERALL SIZE: 560MM X 152MM  
FIXING PLATE: 152MM X 38MM  
HINGE ARM: 508MM



33012 - Black Finish



**33011**  
BEESWAX



**33012**  
BLACK



**33655**  
PEWTER PATINA

*Made from thicker steel and is ideal for carrying very heavy, 3' doors or bigger.*

## 18" T HINGE

OVERALL SIZE: 457MM X 127MM  
FIXING PLATE: 127MM X 25MM  
HINGE ARM: 407MM



33656 - Pewter Patina Finish

*Suitable for 2'6" to 2'9" ledged doors.*



**33010**  
BEESWAX



**33009**  
BLACK



**33656**  
PEWTER PATINA

15" T HINGE

OVERALL SIZE: 381MM X 127MM  
FIXING PLATE: 127MM X 25MM  
HINGE ARM: 330MM



**33184**  
BEESWAX

**33990**  
BLACK

**33653**  
PEWTER PATINA

Suitable for 2' to 2'3" doors.

33184 - Beeswax Finish

12" T HINGE

OVERALL SIZE: 305MM X 115MM  
FIXING PLATE: 115MM X 25MM  
HINGE ARM: 254MM



33652 - Pewter Patina Finish

Suitable for wardrobe doors.

**33006**  
BEESWAX

**33989**  
BLACK

**33652**  
PEWTER PATINA

9" T HINGE

OVERALL SIZE: 228MM X 102MM  
FIXING PLATE: 102MM X 25MM  
HINGE ARM: 178MM



33988 - Black Finish

**33204**  
BEESWAX

**33988**  
BLACK

**33789**  
PEWTER PATINA

Suitable for wide kitchen cupboard doors.

6" T HINGE

OVERALL SIZE: 152MM X 102MM  
FIXING PLATE: 102MM X 13MM  
HINGE ARM: 114MM



33154 - Beeswax Finish

Suitable for hand crafted cupboard doors.

**33154**  
BEESWAX

**33987**  
BLACK

4" T HINGE

OVERALL SIZE: 102MM X 79MM  
FIXING PLATE: 79MM X 13MM  
HINGE ARM: 76MM



33650 - Pewter Patina Finish

**33188**  
BEESWAX

**33986**  
BLACK

**33650**  
PEWTER PATINA



## ARROW HEAD T HINGES

33654 (18" T Hinge) & 33638 (Gothic Thumbblatch)

### 35" HOOK & BAND HINGE - CRANKED

OVERALL SIZE: 889MM X 194MM  
FIXING PLATE: 194MM X 54MM (PIN DIAMETER: 15MM)  
HINGE ARM: 825MM



33234 - Black Finish



*Ideal for barn or garage doors. This hinge is cranked to allow the door to be in line with the front of the frame. There is no need for the fixing plate to be morticed into the frame of the door.*

**33234**  
BLACK

### 24" HOOK & BAND HINGE

OVERALL SIZE: 610MM X 158MM  
FIXING PLATE: 158MM X 51MM (PIN DIAMETER: 15MM)  
HINGE ARM: 577MM



33189 - Beeswax Finish



*Ideal for heavy, internal doors. The hook plate needs to be morticed into the frame, making the door in-line with the frame.*



**33189**  
BEESWAX

**33286**  
BLACK

24" BAND & SPIKE HINGE

OVERALL SIZE: 610MM X 190MM  
SPIKE: 158MM OVERALL: 190MM (PIN DIAMETER: 15MM)  
HINGE ARM: 572MM



33216 - Beeswax Finish



*Ideal for heavy, internal doors. When fixing the Spike Pin you need to drill a series of pilot holes.*

**33216**  
BEESWAX

36" BARN DOOR T HINGE

OVERALL SIZE: 914MM X 305MM  
FIXING PLATE: 305MM X 51MM  
HINGE ARM: 838MM



33233 - Black Finish

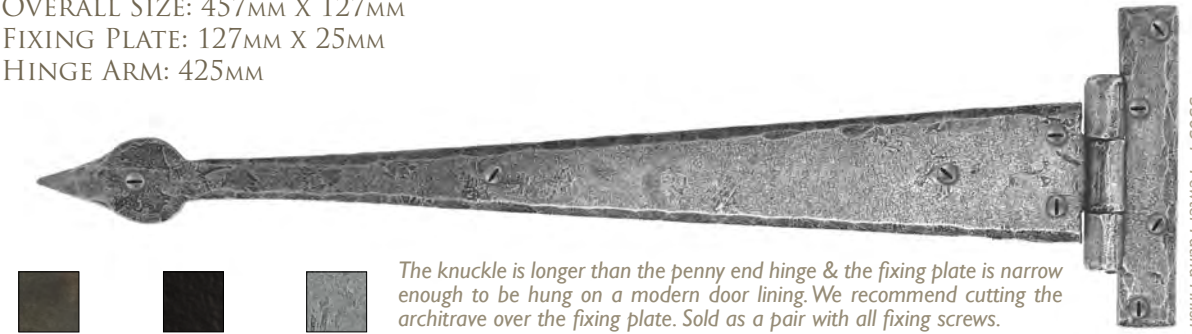
*This hinge can carry the largest of barn or garage doors and allows the door to be in line with the front of the frame.*



**33233**  
BLACK

18" T HINGE

OVERALL SIZE: 457MM X 127MM  
FIXING PLATE: 127MM X 25MM  
HINGE ARM: 425MM



33654 - Pewter Patina Finish



*The knuckle is longer than the penny end hinge & the fixing plate is narrow enough to be hung on a modern door lining. We recommend cutting the architrave over the fixing plate. Sold as a pair with all fixing screws.*

**33158**  
BEESWAX

**33974**  
BLACK

**33654**  
PEWTER PATINA

12" T HINGE

OVERALL SIZE: 305MM X 121MM  
FIXING PLATE: 121MM X 19MM  
HINGE ARM: 267MM



33206 - Beeswax Finish

*This hinge is ideal for small wardrobe doors.*



**33206**  
BEESWAX

**33973**  
BLACK

**33657**  
PEWTER PATINA

## 6" T HINGE

OVERALL SIZE: 178mm X 102mm  
FIXING PLATE: 102mm X 13mm  
HINGE ARM: 157mm

Suitable for  
cupboard  
doors.



**33207**  
BEESWAX



**33972**  
BLACK



**33651**  
PEWTER PATINA



33651 - Pewter Patina Finish

## 4" T HINGE

OVERALL SIZE: 114mm X 83mm  
FIXING PLATE: 83mm X 16mm  
HINGE ARM: 88mm

Ideal for hand  
crafted kitchen  
cupboard doors.



**33208**  
BEESWAX



**33971**  
BLACK



**33774**  
PEWTER PATINA



33208 - Beeswax Finish

## 18" SMOOTH T HINGE

OVERALL SIZE: 467mm X 102mm  
FIXING PLATE: 102mm X 25mm  
HINGE ARM: 425mm

73228 - Black Finish



A high quality cast smooth T hinge suitable for use on a variety of ledged and braced doors up to 2'9" wide.

**73228**  
BLACK

## 16" SMOOTH T HINGE

OVERALL SIZE: 394mm X 102mm  
FIXING PLATE: 102mm X 25mm  
HINGE ARM: 356mm



**73227**  
BLACK

A high quality cast smooth T hinge suitable for use on a variety of smaller door sizes (2' to 2'3").



73227 - Black Finish

## 12" SMOOTH T HINGE

OVERALL SIZE: 318mm X 102mm  
FIXING PLATE: 102mm X 25mm  
HINGE ARM: 273mm

73226 - Black Finish



A high quality cast smooth T hinge suitable for use on a variety of cupboard & wardrobe doors.

**73226**  
BLACK



16633/2 (4" Ball Bearing Butt Hinge) & 33238 (18" Hinge Front)

## 3" BUTT HINGE

HINGE SIZE: 77MM X 51MM (Beeswax/Pewter)  
LEAF WIDTH: 19MM (Beeswax/Pewter)  
HINGE SIZE: 77MM X 63MM (Black)  
LEAF WIDTH: 26MM (Black)

Comes in three finishes matching our door or cabinet furniture. Typical used for ledged and braced doors. Sold in pairs with all fixing screws.



33436 - Beeswax Finish

**33436**  
BEESWAX

**16632/1**  
BLACK

**33692**  
PEWTER PATINA

## 4" BUTT HINGE

HINGE SIZE: 102MM X 60MM (Beeswax/Pewter)  
LEAF WIDTH: 25MM (Beeswax/Pewter)  
HINGE SIZE: 102MM X 75MM (Black)  
LEAF WIDTH: 31MM (Black)

Ideal for use with Hinge Fronts (see picture). Three finishes to match our door furniture. Sold in pairs with all fixing screws.



33693 - Pewter Patina Finish

**33437**  
BEESWAX

**16633**  
BLACK

**33693**  
PEWTER PATINA

## 4" BALL BEARING BUTT HINGE

OVERALL SIZE: 102MM X 76MM  
LEAF WIDTH: 30MM

A heavy duty butt hinge, ideal for heavyweight doors. The smooth action of the ball bearing will last for years. Grade 13 Stainless Steel and CE marked. Ideal for use with Hinge Fronts (see picture) or to complete your door furniture. Sold in pairs with all fixing screws.



16633/2 - Black Finish

**16633/2**  
BLACK

**16614/1**  
SATIN STAINLESS  
STEEL

## 3" BALL BEARING BUTT HINGE

OVERALL SIZE: 76MM X 50MM  
LEAF WIDTH: 20MM  
A heavy duty butt hinge, ideal for heavyweight doors. The smooth action of the ball bearing will last for years. Sold in pairs with all fixing screws.



16632/2 - Black Finish

**16632/2**  
BLACK

**16612/A**  
SATIN STAINLESS STEEL

## 24" HINGE FRONT

OVERALL SIZE: 610MM X 57MM



33787 - Pewter Patina Finish



This product is purely decorative when used in conjunction with matching butt hinges.

**33241**  
BEESWAX

**33239**  
BLACK

**33787**  
PEWTER PATINA

## 18" HINGE FRONT

OVERALL SIZE: 457MM X 51MM



33238 - Black Finish

This product is purely decorative when used in conjunction with matching butt hinges.



**33240**  
BEESWAX

**33238**  
BLACK

**33786**  
PEWTER PATINA

## 7" H HINGE

OVERALL SIZE: 178MM X 70MM  
FIXING PLATE: 178MM X 25MM

*Ideal for internal doors & shutters. This hinge may also be used in a bi-folding situation.*



33181 - Beeswax Finish

**33181**

BEESWAX

**33785**

PEWTER PATINA

## 4" H HINGE

OVERALL SIZE: 102MM X 41MM  
FIXING PLATE: 102MM X 16MM

*Ideal for use when hanging cabinet and cupboard doors or can be used with window shutters.*



33628 - Pewter Patina Finish

**33628**

PEWTER PATINA

## 3 1/4" H HINGE

OVERALL SIZE: 82MM X 32MM  
FIXING PLATE: 82MM X 13MM

*Ideal for use when hanging cabinet and cupboard doors or can be used with window shutters.*



33914 - Bronze Finish

**33260**

BEESWAX

**33985**

BLACK

**33914**

BRONZE

## 9" HL HINGE

OVERALL SIZE: 228MM X 235MM  
'L' FIXING PLATE: 228MM X 184MM

*Used in similar applications to the H hinges but with one strap shaped like a letter L to provide extra strength for heavier or damaged doors.*



33183 - Beeswax Finish

**33183**

BEESWAX

**33759**

PEWTER PATINA

## 7" HL HINGE

OVERALL SIZE: 178MM X 172MM  
'L' FIXING PLATE: 178MM X 133MM

*Used in similar applications to the H hinges but with one strap shaped like a letter L to provide extra strength for heavier or damaged doors.*



33182 - Beeswax Finish

**33182**

BEESWAX

**33760**

PEWTER PATINA

## 3 1/4" HL HINGE

OVERALL SIZE: 83MM X 70MM  
'L' FIXING PLATE: 83MM X 51MM

*Used in similar applications to the H hinges but with one strap shaped like a letter L to provide extra strength for heavier or damaged doors.*



33257 - Beeswax Finish

**33257**

BEESWAX

**33784**

PEWTER PATINA

## H & HL HINGES

33257 (HL Hinge)

# BUTTERFLY & HALF BUTTERFLY HINGES



33687 (Butterfly Hinge)

33783 - Pewter Patina Finish



## HALF BUTTERFLY HINGE - LARGE

OVERALL SIZE: 82MM X 82MM  
FIXING PLATE: 76MM X 16MM  
HINGE ARM: 82MM X 57MM

*A decorative hinge but with only one wing so they are easier to mount in restricted spaces. Sold as a pair with matching fixing screws.*



**33259**  
BEESWAX

**33783**  
PEWTER PATINA

## HALF BUTTERFLY HINGE - SMALL

OVERALL SIZE: 51MM X 51MM  
FIXING PLATE: 51MM X 10MM  
HINGE ARM: 51MM X 32MM

*A decorative hinge but with only one wing so they are easier to mount in restricted spaces. Sold as a pair with matching fixing screws.*



**33258**  
BEESWAX

**33782**  
PEWTER PATINA

33258 - Beeswax Finish



## BUTTERFLY HINGE - LARGE

OVERALL SIZE: 127MM X 83MM  
HINGE ARM: 83MM X 57MM

*A decorative carpentry hinge that can be used for a number of larger applications like doors and desk lids. Sold as a pair with beeswaxed fixing screws.*



**33200**  
BEESWAX

**33761**  
PEWTER PATINA



33200 - Beeswax Finish

## BUTTERFLY HINGE - SMALL

OVERALL SIZE: 76MM X 51MM  
HINGE ARM: 51MM X 35MM

*A decorative carpentry hinge that can be used for a number of smaller applications like kitchen cupboards and trinket boxes. Sold as a pair with matching fixing screws.*



**33199**  
BEESWAX

**33687**  
PEWTER PATINA



33687 - Pewter Patina Finish

# ORNATE & SHUTTER HINGES

33213 - Beeswax Finish



## SHUTTER HINGE

OVERALL HEIGHT: 102MM  
HINGE LEAF: 38MM X 41MM  
TAIL: 44MM X 51MM

*French shutter hinges are designed with an angled offset on which the shutter is mounted so that when the shutter is opened it is thrown clear of the window. Sold as a pair with all fixing screws.*



**33213**  
BEESWAX



33213 (Shutter Hinge)

## ORNATE HINGE

OVERALL SIZE: 95MM X 63MM  
HINGE LEAVES: 60MM & 25MM

*Sold as a pair with beeswaxed fixing screws.*



**33219**  
BEESWAX

33219 - Beeswax Finish





## THUMBLATCHES & LATCHES

BEAN THUMBLATCH - *Page 17-18*

GOTHIC THUMBLATCH - *Page 19*

THUMBLATCH ACCESSORIES - *Page 20*

COTTAGE LATCH - *Page 21*

PRIVACY LATCH - *Page 22*

LATCH SET - *Page 22*

SHAKESPEARE LATCH - *Page 23*

*From The Anvil - Door Furniture*



## BEAN THUMBLATCHES

33101 (Medium Bean Thumbatch)

### MEDIUM BEAN THUMBLATCH

HANDLE LENGTH: 210MM  
THUMB BAR LENGTH: 140MM  
LATCH LENGTH: 190MM

*The thumb piece passes through the door and raises the latch bar off the keep. To restrict the latch bar movement a staple pin and a screw on staple pin are provided (discard unused pin). For use on doors with a max thickness of 55mm.*



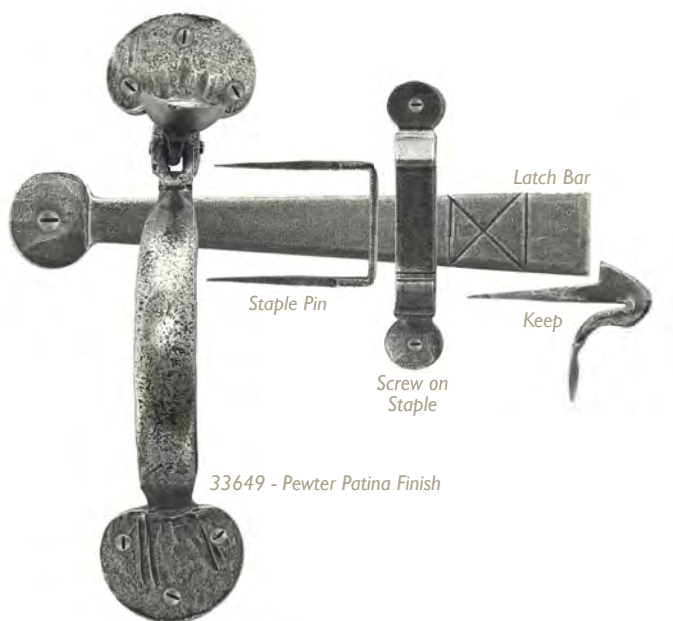
**33101**  
BEESWAX



**33176**  
BLACK



**33649**  
PEWTER PATINA



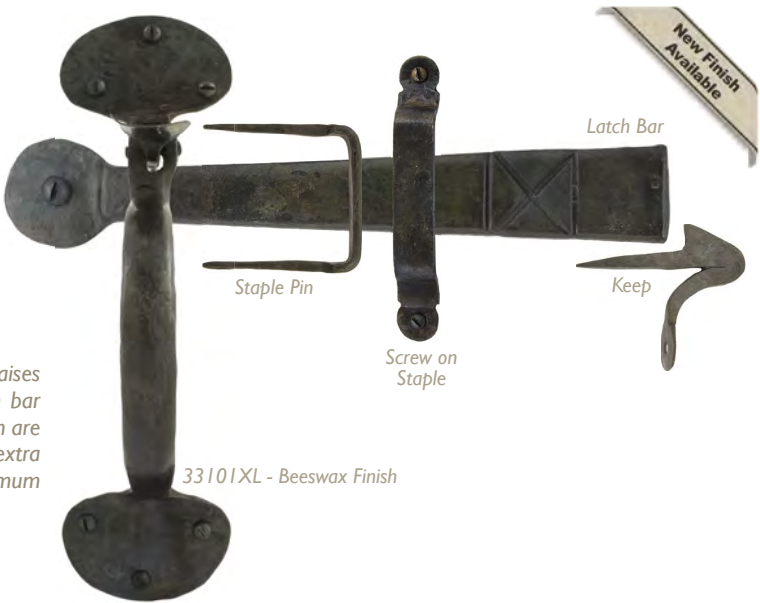
# MEDIUM BEAN THUMBLATCH - XL

HANDLE LENGTH: 216MM  
THUMB BAR LENGTH: 165MM  
LATCH LENGTH: 190MM

The thumb piece passes through the door and raises the latch bar off the keep. To restrict the latch bar movement a staple pin and a screw on staple pin are provided (discard unused pin). Comes with an extra long thumb bar for use on doors with a maximum thickness of 75mm.



**33101XL** **33762**  
BEESWAX PEWTER PATINA



33101XL - Beeswax Finish

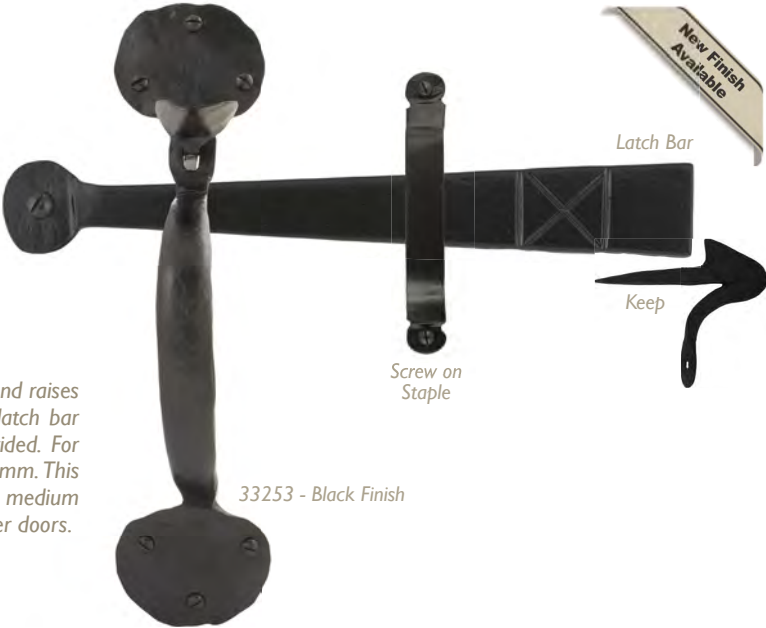
# HEAVY BEAN THUMBLATCH

HANDLE LENGTH: 228MM  
THUMB BAR LENGTH: 140MM  
LATCH LENGTH: 216MM

The thumb piece passes through the door and raises the latch bar off the keep. To restrict the latch bar movement a screw on staple pin is provided. For use on doors with a max thickness of 55mm. This product has bigger proportions than the medium thumblatch and is designed for use on larger doors.



**33159** **33253** **33763**  
BEESWAX BLACK PEWTER PATINA



33253 - Black Finish

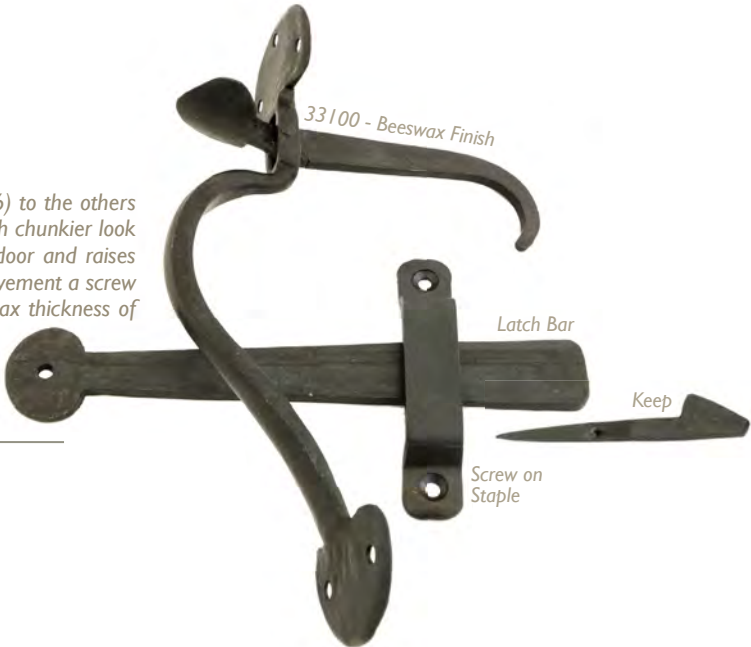
# SLIM THUMBLATCH

HANDLE LENGTH: 222MM  
THUMB BAR LENGTH: 127MM  
LATCH LENGTH: 184MM

A different style of thumblatch (see picture - page 16) to the others in our collection with a slim profile handle and a much chunkier look and feel to it. The thumb piece passes through the door and raises the latch bar off the keep. To restrict the latch bar movement a screw on staple pin is provided. For use on doors with a max thickness of 45mm.



**33100**  
BEESWAX



33100 - Beeswax Finish



33638 (Gothic Thumblatch)

## GOthic THUMBLATCHES

### GOthic THUMBLATCH

HANDLE LENGTH: 216MM  
THUMB BAR LENGTH: 140MM  
LATCH LENGTH: 190MM

*The thumb piece passes through the door and raises the latch bar off the keep. To restrict the latch bar movement a staple pin and a screw on staple pin are provided (discard unused pin). For use on doors with a max thickness of 55mm.*



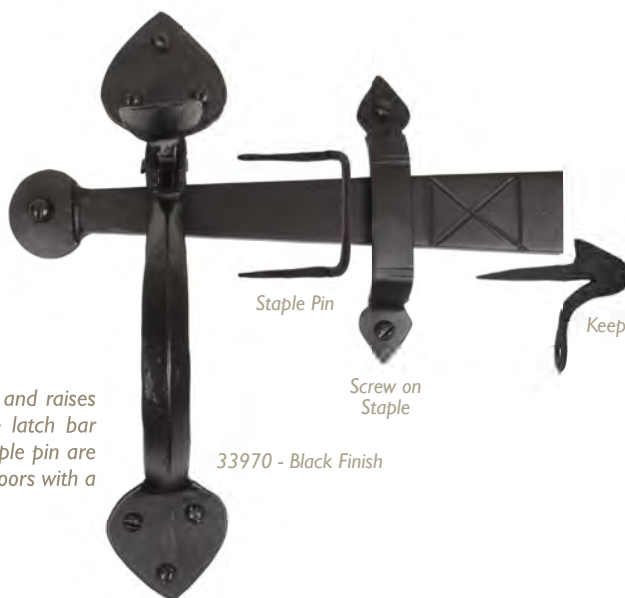
**33150**  
BEESWAX



**33970**  
BLACK



**33638**  
PEWTER PATINA



33970 - Black Finish

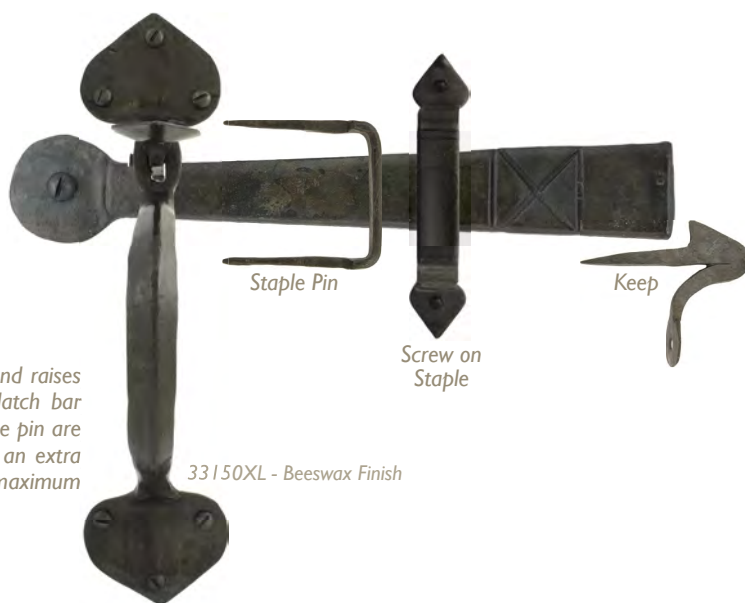
### GOthic THUMBLATCH - XL

HANDLE LENGTH: 216MM  
THUMB BAR LENGTH: 165MM  
LATCH LENGTH: 190MM

*The thumb piece passes through the door and raises the latch bar off the keep. To restrict the latch bar movement a staple pin and a screw on staple pin are provided (discard unused pin). Comes with an extra long thumb bar for use on doors with a maximum thickness of 75mm.*



**33150XL**  
BEESWAX



33150XL - Beeswax Finish

# THUMBLATCH ACCESSORIES



33637 (Screw on Staple - Gothic End)

## SCREW ON STAPLE GOthic END

OVERALL SIZE: 102MM X 14MM

Can be used as a replacement for a missing part from an existing thumb latch set. Ideal to use instead of the 'drive-in' staple pin if fitting on a thinner door.



**33304/1**  
BEESWAX



**33817**  
BLACK



**33637**  
PEWTER PATINA



33637 - Pewter Patina Finish

## SCREW ON STAPLE PENNY END

OVERALL SIZE: 120MM X 16MM

Can be used as a replacement for a missing part from an existing thumb latch set. Ideal to use instead of the 'drive-in' staple pin if fitting on a thinner door.



**33304**  
BEESWAX



**33175**  
BLACK



**33639**  
PEWTER PATINA



33304 - Beeswax Finish

## STAPLE PIN

OVERALL SIZE: 54MM X 63MM

A replacement staple pin in case of a missing part from an existing set.



33202 - Beeswax Finish



**33202**  
BEESWAX



**33968**  
BLACK



**33780**  
PEWTER PATINA

33174 - Black Finish



## LOCKING STAPLE PIN

OVERALL SIZE: 54MM X 63MM

Can be used to lock your bathroom or toilet. Supplied with a leather thong & pin to stop the movement of the latch bar.



**33244**  
BEESWAX



**33174**  
BLACK



**33648**  
PEWTER PATINA

## FRAME KEEP PIN

OVERALL SIZE: 63MM X 54MM

A replacement frame keep in case of a missing part from an existing set.



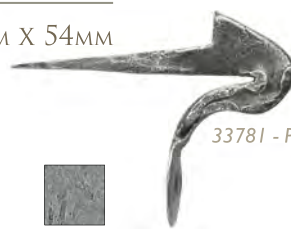
**33203**  
BEESWAX



**33969**  
BLACK



**33781**  
PEWTER PATINA



33781 - Pewter Patina Finish



33295 (Cottage Latch - Right Hand)

LATCHES &  
RING TURNSCOTTAGE LATCH  
LEFT HAND

OVERALL SIZE: 152MM X 101MM  
HANDLE SIZE: 69MM  
ROSETTE SIZE: 67MM

*The Cottage Latch is supplied with all fixing screws and an 8mm spindle. It also comes with matching ring for the other side of the door with a rosette back plate.*

*Made from steel including the bar and keeps, which makes it the only one in the country to be made like this i.e steel throughout.*

33147L - Beeswax Finish



**33147L**  
BEESWAX



**33294**  
BLACK



**33666**  
PEWTER PATINA

COTTAGE LATCH  
RIGHT HAND

OVERALL SIZE: 152MM X 101MM  
HANDLE SIZE: 69MM  
ROSETTE SIZE: 67MM

*The Cottage Latch is supplied with all fixing screws and an 8mm spindle. It also comes with matching ring for the other side of the door with a rosette back plate.*

*Made from steel including the bar and keeps, which makes it the only one in the country to be made like this i.e steel throughout.*



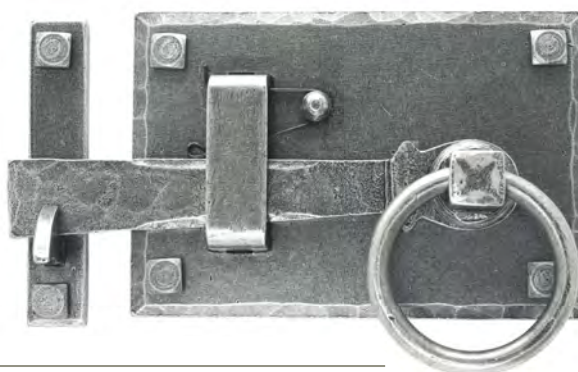
**33147R**  
BEESWAX



**33295**  
BLACK



**33667**  
PEWTER PATINA

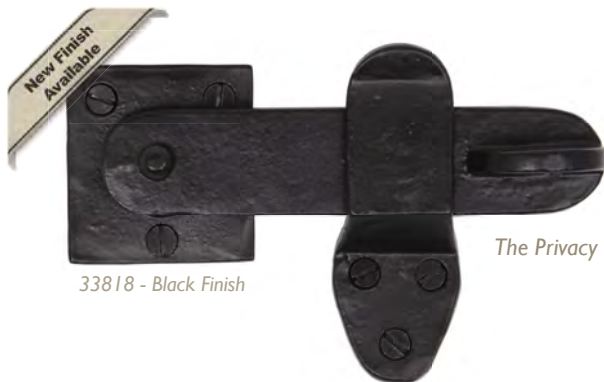


33667 - Pewter Patina Finish



# PRIVACY & LATCH SET

33966 (Latch Set)



33818 - Black Finish

## PRIVACY LATCH SET

OVERALL SIZE: 146MM X 28MM  
LATCH LENGTH: 133MM  
FIXING PLATE: 51MM X 51MM

The Privacy Latch Set cannot be opened from the outside.  
Supplied with all fixing screws.



33296  
BEESWAX



33818  
BLACK

## LATCH SET

OVERALL SIZE: 165MM X 25MM  
STAPLE SIZE: 54MM X 63MM  
SCREW ON STAPLE SIZE: 120MM X 16MM

The Latch Set is mainly used on doors with single-side access (airing cupboards etc.) and is opened by a knob on the latch bar. To restrict the latch bar movement a staple pin and a screw on staple pin are provided (discard unused pin).



33160  
BEESWAX



33966  
BLACK



33779  
PEWTER PATINA





## SHAKESPEARE LATCH

33685 (Shakespeare Latch Set)

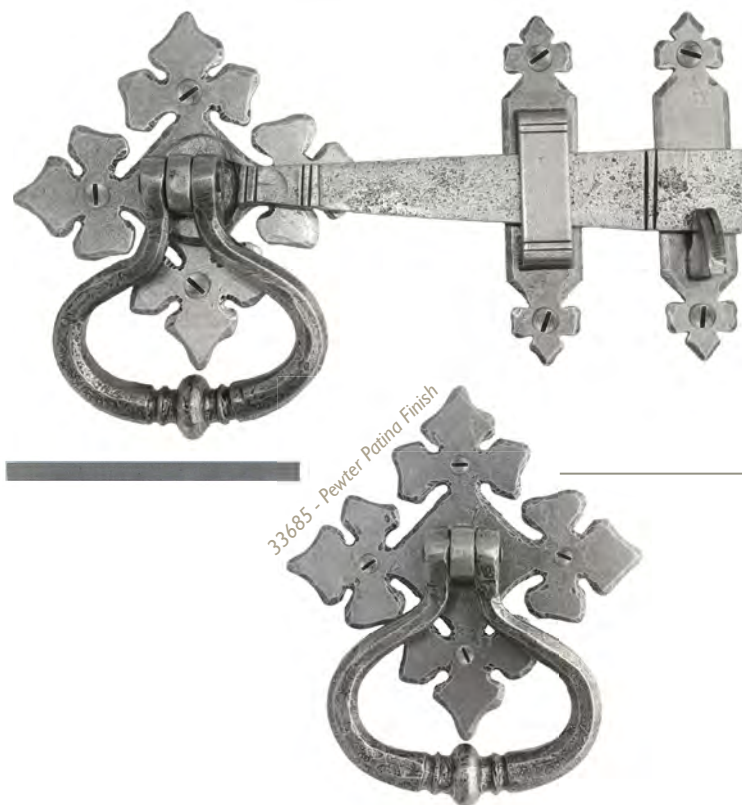
SHAKESPEARE  
LATCH SET

HANDLE WIDTH: 95MM  
 LATCH LENGTH: 178MM  
 FIXING PLATE: 127MM  
 KEEP SIZE: 127MM X 27MM

*The Shakespeare Range has been hand-crafted and is truly an elegant work of art. This set comes complete with two handles and an 8mm spindle long enough for a 3' door or gate thickness.*



**33685**  
 PEWTER PATINA



33685 - Pewter Patina Finish

## RING TURNS

SHAKESPEARE RING TURN SET - *Page 25*

RING TURN HANDLE SET - *Page 25*

*From The Anvil - Door Furniture*



33689

## RING TURNS

33686 (Shakespeare Ring Turn)

### SHAKESPEARE RING TURN SET

HANDLE WIDTH: 95MM  
FIXING PLATE: 127MM

A ring turn set based on the elegant Shakespeare latch. Comes complete with two handles, an 8mm spindle (long enough for a 3' door or gate) and a 4" heavy duty latch (**18299/4"**) (see page 102) which is designed for large doors with a wide stile or centre middle rail.



**33686**  
PEWTER PATINA

**33951**  
BRONZE



### RING TURN HANDLE SET

HANDLE SIZE: 67MM  
ROSETTE SIZE: 67MM  
SPINDLE SIZE: 8MM

A traditional looking ring turn set which is ideal for many doors around the home. Comes complete with two ring handles, an 8mm spindle and all matching fixing screws. See page 102 for suitable latches.



**33112**  
BEESWAX

**33017**  
BLACK

**33689**  
PEWTER PATINA



LEVER HANDLES

- CURLY LEVER HANDLES - Page 27
- MONKEYTAIL LEVER HANDLES - Page 28
- COTTAGE LEVER HANDLES - Page 29
- OAK LEVER HANDLES - Page 30
- SMOOTH LEVER HANDLES - Page 30
- STRAIGHT LEVER HANDLES - Page 31
- NARROW LEVER HANDLES - Page 32
- AVON LEVER HANDLES - Page 32-33
- GOTHIC LEVER HANDLES - Page 34-35
- GOTHIC CURVED LEVER HANDLES - Page 36
- TUDOR LEVER HANDLES - Page 37
- CROMWELL LEVER HANDLES - Page 38

*From The Anvil - Door Furniture*



33123

83500 - Natural textured Finish



## CURLY LEVER LOCK SET

BACKPLATE SIZE: 165MM X 51MM  
HANDLE LENGTH: 114MM  
CENTRES: 57MM

A very traditional style curly sprung lever handle which is a faithful reproduction of a classic design. Finished off with the superb Natural Textured finish to give the old design a brand new lease of life and much more of a contemporary look and feel. Only for use internally or where protected. See page 101 for suitable locks.



**83500**  
NATURAL  
TEXTURED



83500 (Curly Lever Lock)



83501 - Natural textured Finish

## CURLY LEVER LATCH SET

BACKPLATE SIZE: 165MM X 51MM  
HANDLE LENGTH: 114MM

A handle to match and compliment the curly lever lock set, provides the same stylish design and looks but allows versatility in its uses around the home where a latch is desired. The new Natural Textured finish will look great against a natural wooden door or stands out even better on a colourful, painted door. See page 101 for suitable latches.



**83501**  
NATURAL  
TEXTURED

## CURLY LEVER BATHROOM SET

BACKPLATE SIZE: 165MM X 51MM  
HANDLE LENGTH: 114MM  
CENTRES: 57MM

To finish the curly lever range off we have also designed a Bathroom handle with a quality fitted, matching thumbturn for security, when used in conjunction with a bathroom mortice lock (see page 60). It means you can now complete your whole house with matching curly door furniture and in our latest textured finish. See page 101 for suitable bathroom mortice locks.



**83502**  
NATURAL  
TEXTURED



83502 - Natural textured Finish

# MONKEYTAIL LEVER HANDLES



33612 (Monkeytail on Diamond), 33622 (Euro Escutcheon) & 18355/A Euro DIN Sash Lock

33279 - Black Finish



## MONKEYTAIL LEVER LOCK SET

BACKPLATE SIZE: 152MM X 51MM  
HANDLE LENGTH: 127MM  
CENTRES: 57MM

*This range of unsprung handles has a simple backplate design so all the focus is directed at the very distinctive Monkeytail handle which has been drawn from a single piece of steel to give an exquisite detail. See page 102 for suitable locks.*



**33900** BEESWAX    **33279** BLACK    **33615** PEWTER PATINA

## MONKEYTAIL LEVER LATCH SET

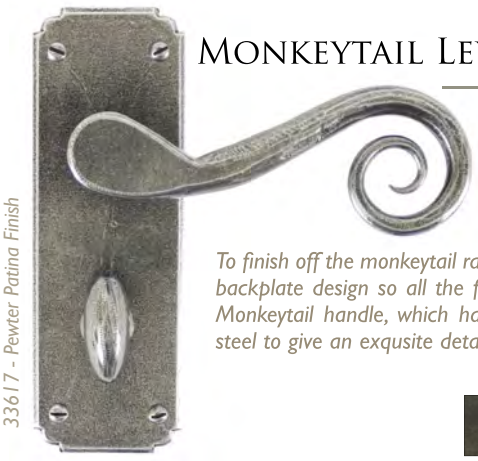
BACKPLATE SIZE:  
152MM X 51MM  
HANDLE LENGTH:  
127MM

*A lever latch handle to compliment the lock version and allows use in a multitude of areas around the home. It's distinctive style wouldn't look out of place on any style of door, painted or natural. See page 102 for suitable latches.*



**33901** BEESWAX    **33278** BLACK    **33616** PEWTER PATINA

33901 - Beeswax Finish



33617 - Pewter Patina Finish

## MONKEYTAIL LEVER BATHROOM SET

BACKPLATE SIZE:  
152MM X 51MM  
HANDLE LENGTH: 127MM  
CENTRES: 57MM

*To finish off the monkeytail range this bathroom handle has a simple backplate design so all the focus is directed at the very distinctive Monkeytail handle, which has been drawn from a single piece of steel to give an exquisite detail. See page 102 for suitable bathroom mortice locks.*



**33902** BEESWAX    **33266** BLACK    **33617** PEWTER PATINA

## DIAMOND ESCUTCHEONS

See page 55 for details



## MONKEYTAIL ON DIAMOND ROSETTE

ROSETTE SIZE: 76MM X 76MM  
HANDLE LENGTH: 127MM

*A very desirable and distinctive product which can be very versatile when used in conjunction with either a latch, lock, bathroom dead bolt, Euro or Espag. mechanism. Matching escutcheons (page 55), Diamond Thumbturns (page 56) and all locks & latches (page 101-103).*



**33848** BEESWAX    **33235** BLACK    **33612** PEWTER PATINA    **33935** BRONZE

## DIAMOND BATHROOM THUMBTURN

See page 56 for details



New Finish Available

33935 - Bronze Finish

NEW

73106 - Black Finish



### COTTAGE LEVER LOCK SET

BACKPLATE SIZE: 171MM X 51MM  
HANDLE LENGTH: 89MM  
CENTRES: 57MM

*A very traditional looking design which incorporates a decorative 'curl' at the end of a slightly curved handle and a 'wave' design cut into the top and bottom of the backplate. See page 101 for suitable locks.*



**73106**  
BLACK



73106 (Cottage Lever Lock)

73107 - Black Finish



### COTTAGE LEVER LATCH SET

BACKPLATE SIZE: 171MM X 51MM  
HANDLE LENGTH: 89MM

*A latch version of the traditional Cottage handle which allows versatility in it's areas of use and helps to create a uniform look throughout your home if used with the other handles in the range. See page 101 for suitable latches.*



**73107**  
BLACK

### COTTAGE LEVER BATHROOM SET

BACKPLATE SIZE: 171MM X 51MM  
HANDLE LENGTH: 89MM  
CENTRES: 57MM

*This bathroom set helps to complete the Cottage range of handles and comes complete with a fitted thumbturn, which has a smooth turning action and allows the locking of your door when used in conjunction with a bathroom mortice lock (see page 101).*



**73108**  
BLACK



73108 - Black Finish



## OAK & SMOOTH LEVER HANDLES

33633 (Narrow Lever Espagnolette)

33319 - Black Finish



### OAK LEVER LOCK SET

BACKPLATE SIZE: 130MM X 51MM

HANDLE LENGTH: 95MM

CENTRES: 57MM

A very traditional style, sprung handle with a decorative feature cut into the backplate and a simple, yet stylish design to the handle. See page 101 for suitable locks.



**33319**  
BLACK

33318 - Black Finish



### OAK LEVER LATCH SET

BACKPLATE SIZE: 150MM X 51MM

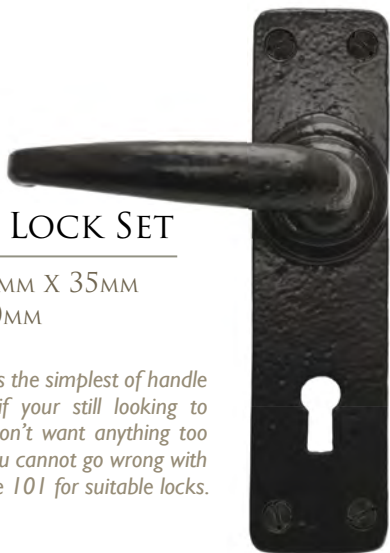
HANDLE LENGTH: 95MM

A latch version to compliment the very traditional style of our Oak Lock Set so the same style and feel can be re-created anywhere in the home. See page 101 for suitable latches.



**33318**  
BLACK

33320 - Black Finish



### SMOOTH LEVER LOCK SET

BACKPLATE SIZE: 152MM X 35MM

HANDLE LENGTH: 90MM

CENTRES: 57MM

The Smooth sprung lever lock is the simplest of handle designs in our collection so if your still looking to create that antique feel but don't want anything too flamboyant of a design then you cannot go wrong with this solid steel handle. See page 101 for suitable locks.



**33320**  
BLACK

33317 - Black Finish



### SMOOTH LEVER LATCH SET

BACKPLATE SIZE: 152MM X 35MM

HANDLE LENGTH: 90MM

The Smooth sprung lever latch is the simplest of handle designs in our collection so if your still looking to create that antique feel but don't want anything too flamboyant of a design then you cannot go wrong with this solid steel handle. See page 101 for suitable latches.



**33317**  
BLACK

## STRAIGHT LEVER HANDLES



73109 (Straight Lever Lock)

### STRAIGHT LEVER LOCK SET

BACKPLATE SIZE: 152MM X 41MM  
HANDLE LENGTH: 127MM  
CENTRES: 57MM

The Straight range of sprung lever handles have a very simple, square backplate which doesn't distract from the stylish round boss and the distinctive, long handle. See page 101 for suitable locks.



73113  
BEESWAX



73109  
BLACK



73112  
ANTIQUE  
PEWTER



73112 - Antique Pewter Finish

### STRAIGHT LEVER LATCH SET

BACKPLATE SIZE: 152MM X 41MM  
HANDLE LENGTH: 127MM

A latch version to compliment the very stylish design of our Straight, sprung lock set so the same look and feel can be re-created anywhere in the home, including bedrooms, dining rooms and kitchens. See page 101 for suitable latches.



73114 - Beeswax Finish



73114  
BEESWAX



73110  
BLACK

### STRAIGHT LEVER BATHROOM SET

BACKPLATE SIZE: 152MM X 41MM  
HANDLE LENGTH: 127MM  
CENTRES: 57MM

This bathroom set helps to complete the Straight range of sprung handles and comes complete with a fitted thumbturn, which has a smooth turning action and allows the locking of your door when used in conjunction with a bathroom mortice lock (see page 101).



73115  
BEESWAX



73111  
BLACK



73111 - Black Finish

# NARROW & AVON LEVER HANDLES



33700 (Avon Lever Lock)

## NARROW LEVER ESPAG. LOCK SET

BACKPLATE SIZE: 220MM X 30MM  
BACKPLATE THICKNESS: 5MM  
HANDLE LENGTH: 115MM  
CENTRES: 92MM  
FIXING CENTRES: 123MM

*This narrow Espag. set has a very nice 'twist' detail in the handle and is designed to be used with multi point locks (3 point locking systems - see page 103). The handle is not sprung which allows for the upward (locking) movement commonly associated with espagnolette systems and ideal for upvc doors.*



**33119**  
BLACK



**33633**  
PEWTER PATINA



33633 - Pewter Finish

## AVON LEVER LATCH SET

BACKPLATE SIZE: 152MM X 48MM  
HANDLE LENGTH: 110MM

*This latch version of our very popular Avon range enables versatility for the user in areas around the home where you have no need for a locking mechanism i.e. in a lounge or dining room. See page 102 for suitable latches.*



**33701**  
PEWTER PATINA



33701 - Pewter Patina Finish

## AVON LEVER LOCK SET

BACKPLATE SIZE: 152MM X 48MM  
HANDLE LENGTH: 110MM  
CENTRES: 57MM

*A very striking, contemporary handle that looks great on any type of house, old or new & has a strong spring incorporated into the stylish boss design to give it both functionality & elegance. See page 101 for suitable locks.*



**33700**  
PEWTER PATINA

33700 - Pewter Patina Finish





33702 - Pewter Patina Finish

## AVON LEVER BATHROOM SET

BACKPLATE SIZE: 152MM X 48MM  
HANDLE LENGTH: 110MM  
CENTRES: 57MM

*A bathroom version of the stylish Avon handle which comes complete with a fitted thumbturn, has a smooth turning action and allows the locking of your door when used in conjunction with a bathroom mortice lock (see page 101).*



**33702**  
PEWTER PATINA



33703 - Pewter Patina Finish

## AVON LEVER EURO LOCK SET

BACKPLATE SIZE: 152MM X 48MM  
BACKPLATE THICKNESS: 5MM  
HANDLE LENGTH: 110MM  
CENTRES: 47MM

*The Euro version of the Avon handle is designed to be used in conjunction with a euro sash lock and euro cylinder, with or without a thumbturn (see page 102) and allows your door to be locked from the inside or out. Ideal for guest rooms, hotels or replacement of existing euro handles.*



**33703**  
PEWTER PATINA



33123 - Black Finish

## AVON LEVER ESPAG. LOCK SET

BACKPLATE SIZE: 241MM X 48MM  
BACKPLATE THICKNESS: 5MM  
HANDLE LENGTH: 110MM  
CENTRES: 92MM  
FIXING CENTRES: 215MM

*An espagnolette version of the stylish Avon handle, which is designed with an extra long backplate to be used with all multi point locks (3 point locking systems - see page 103 & Euro Cylinders - see page 102). This handle is the only one of the Avon range which is not sprung and allows for upward (locking) movement of the handle but still incorporates the same, elegant boss design.*



**33123** **33704**  
BLACK PEWTER PATINA

# GOTHIC LEVER HANDLES



33600 (Gothic Lever Lock), 33663 (Straight Door Bolt) & 33693 (4" Butt Hinge)

## GOTHIC LEVER LOCK SET

BACKPLATE SIZE: 248MM X 44MM  
HANDLE LENGTH: 110MM  
CENTRES: 57MM

The Gothic range of handles get their name from the 'pointed arch' to the backplate, reminiscent of gothic architecture and the styled handle, turned to be seen at an angle, notched and pointed at the end only adds to that 'Gothic' effect. This lock version is ideal for a front door with a similar style but also looks great on any imposing entrance way. See page 102 for suitable locks.



33942 - Bronze Finish



33271  
BEESWAX



33276  
BLACK



33600  
PEWTER PATINA



33942  
BRONZE

## GOTHIC LEVER LATCH SET

BACKPLATE SIZE: 248MM X 44MM  
HANDLE LENGTH: 110MM

This latch version of our Gothic handle allows the same style to be carried throughout the home and has a multitude of areas where it can be used from dining rooms and lounges to bedrooms and kitchens. See page 102 for suitable latches.



33275 - Black Finish



33270  
BEESWAX



33275  
BLACK



33601  
PEWTER PATINA

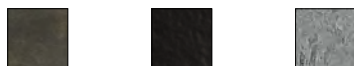


33945  
BRONZE

## GOTHIC LEVER BATHROOM SET

BACKPLATE SIZE: 248MM X 44MM  
HANDLE LENGTH: 110MM  
CENTRES: 57MM

*This bathroom set helps to complete the Gothic range of handles and comes with a fitted thumbturn, which has a smooth turning action and allows the locking of your door when used in conjunction with a bathroom mortice lock (see page 102). Please note Beeswax & Black handles have the new 'Boss' design (see image) whereas the Pewter Patina version has the original design - Please see website for individual product images - [www.fromtheanvil.co.uk](http://www.fromtheanvil.co.uk)*



**33272**  
BEESWAX

**33274**  
BLACK

**33604/B**  
PEWTER PATINA



33272 - Beeswax Finish

## GOTHIC LEVER EURO LOCK SET

BACKPLATE SIZE: 248MM X 44MM  
BACKPLATE THICKNESS: 5MM  
HANDLE LENGTH: 110MM  
CENTRES: 47MM

*The euro version of the Gothic handle is designed to be used in conjunction with a euro sash lock and euro cylinder (see page 102) and allows your door to be locked from inside or outside. Ideal for patio doors or replacement of existing euro handles. Please note the Beeswax handle has the new 'Boss' design whereas the Black & Pewter Patina versions have the original design (see image) - Please see website for individual product images - [www.fromtheanvil.co.uk](http://www.fromtheanvil.co.uk)*



**33269**  
BEESWAX

**33277**  
BLACK

**33604/47**  
PEWTER PATINA



33277 - Black Finish

## GOTHIC LEVER ESPAG. LOCK SET

BACKPLATE SIZE: 248MM X 44MM  
BACKPLATE THICKNESS: 5MM  
HANDLE LENGTH: 110MM  
CENTRES: 92MM  
FIXING CENTRES: 192MM

*An espagnolette version of the Gothic handle, which is designed to be used with multi point locks, including narrow backsets 3 point locking systems - (see page 103 & Euro Cylinders - see page 102). This handle allows for the upward (locking) movement.*



**33273**  
BLACK

**33604**  
PEWTER PATINA



33604 - Pewter Patina Finish

# GOTHIC CURVED SPRUNG LEVER HANDLES



## GOTHIC CURVED SPRUNG LEVER LOCK SET

BACKPLATE SIZE: 248MM X 43MM  
HANDLE LENGTH: 115MM  
CENTRES: 57MM

*The Gothic Curved range of handles have a heavy duty spring incorporated in a stylish boss design. The backplate keeps the same pointed 'Gothic' look but with a softer, 'curved' handle design. See page 101 for suitable locks.*



**33136**  
BLACK

**33634**  
PEWTER PATINA



33634 - Pewter Patina Finish

33635 (Gothic Curved Lever Latch)

## GOTHIC CURVED SPRUNG LEVER LATCH SET

BACKPLATE SIZE: 248MM X 43MM  
HANDLE LENGTH: 115MM

*This latch version of our Gothic Curved handle allows the same style to be carried throughout the home and has a multitude of areas where it can be used from dining rooms and lounges to bedrooms and kitchens. See page 101 for suitable latches.*



**33137**  
BLACK

**33635**  
PEWTER PATINA



33137 - Black Finish

33636 - Pewter Patina Finish



## GOTHIC CURVED SPRUNG LEVER BATHROOM SET

BACKPLATE SIZE: 248MM X 43MM  
HANDLE LENGTH: 115MM  
CENTRES: 57MM

*This bathroom set helps to complete the Gothic Curved range of handles and comes complete with a fitted thumbturn, which has a smooth turning action and allows the locking of your door when used in conjunction with a bathroom mortice lock (see page 101).*



**33138**  
BLACK

**33636**  
PEWTER PATINA



33170 - Beeswax Finish

## TUDOR LEVER LOCK SET

BACKPLATE SIZE: 273MM X 40MM  
HANDLE LENGTH: 132MM  
CENTRES: 57MM

An authentically styled Tudor lock set with a decorative backplate and an angled handle which is pointed at either end. Nothing smaller than a 3" lock would be advisable with this handle so as not to catch the end of the pointed handle on your doorstep. See page 102 for suitable locks. Please note Black handle has the new 'Boss' design whereas the Beeswax & Pewter Patina version have the original design - Please see website for individual product images - [www.fromtheanvil.co.uk](http://www.fromtheanvil.co.uk)



**33170**  
BEESWAX



**33247**  
BLACK



**33608**  
PEWTER PATINA



33170 (Tudor Lever Lock)



33609 - Pewter Patina Finish

## TUDOR LEVER LATCH SET

BACKPLATE SIZE: 273MM X 40MM  
HANDLE LENGTH: 132MM

A latch handle to compliment the lock version and allows use in a multitude of areas around the home. It's distinctive style wouldn't look out of place on any style of door, painted or natural. A minimum size of a 3" latch is advisable (see page 102). Please note Beeswax handle has the new 'Boss' design whereas the Black & Pewter Patina version have the original design - Please see website for individual product images - [www.fromtheanvil.co.uk](http://www.fromtheanvil.co.uk)



**33171**  
BEESWAX



**33173**  
BLACK



**33609**  
PEWTER PATINA

## TUDOR LEVER ESPAG. LOCK SET

BACKPLATE SIZE: 273MM X 40MM  
BACKPLATE THICKNESS: 5MM  
HANDLE LENGTH: 132MM  
CENTRES: 92MM  
FIXING CENTRES: 243MM

The espag. version compliments the range and is designed to be used with 3 point locking systems - (see page 103 & Euro Cylinders - see page 102) which has a minimum backset of 45mm. The handle is not sprung which allows for the upward (locking) movement commonly associated with espagnolette systems.



**33172**  
BLACK



33172 - Black Finish

# CROMWELL LEVER HANDLES



33117 (Cromwell Lever Latch)



33730 - Pewter Patina Finish

## CROMWELL SPRUNG LEVER LOCK SET

BACKPLATE SIZE: 270MM X 40MM  
HANDLE LENGTH: 115MM  
CENTRES: 57MM

*The Cromwell range of handles have a 'Tudor' style backplate and come with a slightly flattened, triangular shaped handle. They also have a strong spring incorporated into the stylish boss design to give it both functionality and elegance. See page 101 for suitable locks.*



**33116**  
BLACK

**33730**  
PEWTER PATINA

## CROMWELL SPRUNG LEVER LATCH SET

BACKPLATE SIZE: 270MM X 40MM  
HANDLE LENGTH: 115MM

*A latch version of the elegant Cromwell handle which allows versatility in it's areas of use and helps to create a uniform look throughout your home when used with the other handles in the range. See page 101 for suitable latches.*



**33117**  
BLACK

**33731**  
PEWTER PATINA



33117 - Black Finish



33732 - Pewter Patina Finish

## CROMWELL SPRUNG LEVER BATHROOM SET

BACKPLATE SIZE: 270MM X 40MM  
HANDLE LENGTH: 115MM  
CENTRES: 57MM

*This bathroom set helps to complete the Cottage range of handles and comes complete with a fitted thumbturn, which has a smooth turning action and allows the locking of your door when used in conjunction with a bathroom mortice lock (see page 101).*



**33118**  
BLACK

**33732**  
PEWTER PATINA

## PULL HANDLES

GOthic D HANDLES - *Page 40*

BEAN D HANDLES - *Page 41*

HAMMERED D HANDLES - *Page 42*

SHELL PULL HANDLES - *Page 43*

RIBBED PULL HANDLES - *Page 44*

DRAWER PULL HANDLES - *Page 45*

DROP HANDLE - *Page 45*

CABINET HANDLE - *Page 45*

*From The Anvil - Door Furniture*





# GOTHIC D HANDLES

33995 (6" Gothic D Handle)

## 8" GOTHIC D HANDLE

OVERALL SIZE: 203MM X 44MM  
INTERNAL SIZE: 121MM

Can be used on full size doors, cupboards or drawers. Our blacksmiths fashion these D-handles with great skill from a single piece of steel forming the Gothic end. Supplied with all fixing screws.

-   
**33153**  
BEESWAX
-   
**33996**  
BLACK
-   
**33642**  
PEWTER PATINA



## 6" GOTHIC D HANDLE

OVERALL SIZE: 152MM X 38MM  
INTERNAL SIZE: 76MM

Can be used on full size doors, cupboards or drawers. Our blacksmiths fashion these D-handles with great skill from a single piece of steel forming the Gothic end. Supplied with all fixing screws.

-   
**33152**  
BEESWAX
-   
**33995**  
BLACK
-   
**33641**  
PEWTER PATINA



## 4" GOTHIC D HANDLE

OVERALL SIZE: 101MM X 25MM  
INTERNAL SIZE: 51MM

Can be used on full size doors, cupboards or drawers. Our blacksmiths fashion these D-handles with great skill from a single piece of steel forming the Gothic end. Supplied with all fixing screws.

-   
**33151**  
BEESWAX
-   
**33994**  
BLACK
-   
**33640**  
PEWTER PATINA



## BEAN D HANDLES

## 8" BEAN D HANDLE

OVERALL SIZE: 203MM X 57MM  
INTERNAL SIZE: 114MM

Can be used on full size doors, cupboards or drawers. Our blacksmiths fashion these D-handles with great skill from a single piece of steel forming the Bean end. Supplied with all fixing screws.



**33167**  
BEESWAX



**33999**  
BLACK



**33647**  
PEWTER PATINA

33647 - Pewter Patina Finish



33646 (Bean D Handle)

## 6" BEAN D HANDLE

OVERALL SIZE: 152MM X 38MM  
INTERNAL SIZE: 82MM

Can be used on full size doors, cupboards or drawers. Our blacksmiths fashion these D-handles with great skill from a single piece of steel forming the Bean end. Supplied with all fixing screws.



**33169**  
BEESWAX



**33998**  
BLACK



**33646**  
PEWTER PATINA

33998 - Black Finish

## 4" BEAN D HANDLE

OVERALL SIZE: 101MM X 25MM  
INTERNAL SIZE: 51MM

Can be used on full size doors, cupboards or drawers. Our blacksmiths fashion these D-handles with great skill from a single piece of steel forming the Bean end. Supplied with all fixing screws.



**33168**  
BEESWAX



**33997**  
BLACK



**33645**  
PEWTER PATINA

33168 - Beeswax Finish



33646 (Bean D Handle)

## 13 1/2" HAMMERED D HANDLE

OVERALL SIZE: 346MM X 25MM  
INTERNAL SIZE: 311MM  
PROJECTION: 49MM

A large, decorative D Handle with a hammered centre feature fashioned from cast iron and has a smooth natural iron finish. Supplied with fixing screws. Matching knobs on page 76.



**83529**  
NATURAL  
SMOOTH



## 10" HAMMERED D HANDLE

OVERALL SIZE: 252MM X 25MM  
INTERNAL SIZE: 218MM  
PROJECTION: 46MM

A medium, decorative D Handle with a hammered centre feature fashioned from cast iron and has a smooth natural iron finish. Supplied with fixing screws. Matching knobs on page 76.



**83528**  
NATURAL  
SMOOTH



## 5" HAMMERED D HANDLE

OVERALL SIZE: 124MM X 25MM  
INTERNAL SIZE: 90MM  
PROJECTION: 40MM

A smaller, decorative D Handle with a hammered centre feature fashioned from cast iron and has a smooth natural iron finish. Supplied with fixing screws. Matching knobs on page 76.



**83527**  
NATURAL  
SMOOTH



83527 - Natural Smooth Finish

## SHELL PULL HANDLES

83519 (4" Drawer Pull)



## 5" SHELL PULL HANDLE

OVERALL SIZE: 141MM X 18MM  
 INTERNAL SIZE: 120MM  
 PROJECTION: 28MM

A stylish small pull handle which tapers towards the middle and has a very simple shell like design. Fashioned from cast iron and has a smooth natural iron finish. Supplied with concealed fixing screws. Matching knobs on page 77.



Alternative View

**83533**  
 NATURAL  
 SMOOTH



## 7" SHELL PULL HANDLE

OVERALL SIZE: 176MM X 22MM  
 INTERNAL SIZE: 149MM  
 PROJECTION: 33MM

A stylish medium sized pull handle which tapers towards the middle and has a very simple shell like design. Fashioned from cast iron and has a smooth natural iron finish. Supplied with concealed fixing screws. Matching knobs on page 77.



Alternative View

**83534**  
 NATURAL  
 SMOOTH



## 4" DRAWER PULL

OVERALL SIZE: 101MM X 47MM  
 INTERNAL SIZE: 75MM  
 PROJECTION: 30MM

A simple yet stylish pull handle ideal for cupboard doors, cabinets and drawer fronts. Fashioned from cast iron and has a smooth natural iron finish. Supplied with concealed fixing screws. Matching knobs on page 77.



**83519**  
 NATURAL  
 SMOOTH





## RIBBED PULL HANDLES

83532 (9" Ribbed Pull Handle)

83532 - Natural Smooth Finish

### 9" RIBBED PULL HANDLE

OVERALL SIZE: 232MM X 18MM  
INTERNAL SIZE: 216MM  
PROJECTION: 30MM

*A stylish large pull handle with a very simple 'Ribbed' design along the edge. Fashioned from cast iron and has a smooth natural iron finish. Supplied with concealed fixing screws. Matching knobs on page 77.*



**83532**  
NATURAL  
SMOOTH

83530 - Natural Smooth Finish

### 5 1/2" RIBBED PULL HANDLE

OVERALL SIZE: 136MM X 18MM  
INTERNAL SIZE: 122MM  
PROJECTION: 27MM

*A stylish small pull handle with a very simple 'Ribbed' design along the edge. Fashioned from cast iron and has a smooth natural iron finish. Supplied with concealed fixing screws. Matching knobs on page 77.*



**83530**  
NATURAL  
SMOOTH



## PULL HANDLES

83517 (Drawer Pull)



83517 - Natural Smooth Finish

### DRAWER PULL

OVERALL SIZE: 102mm X 44mm

INTERNAL SIZE: 69mm

PROJECTION: 22mm

A very decorative drawer pull with intricate detailing. It has been polished to a very high sheen and shows the superb, natural metal colour. Looks great against painted or natural wood in a kitchen or bedroom. Comes supplied with fixing screws.

**83517**  
NATURAL  
SMOOTH

### DRAWER PULL

OVERALL SIZE: 98mm X 51mm

INTERNAL SIZE: 65mm

PROJECTION: 22mm

A traditional style of drawer pull given a new lease of life with the highly polished Natural Smooth finish. A high quality product which has a multitude of uses around the home. Supplied complete with fixing screws.



**83520**  
NATURAL  
SMOOTH



83520 - Natural Smooth Finish

### DROP HANDLE

OVERALL SIZE: 144mm X 44mm

INTERNAL SIZE: 95mm

FIXING PLATES: 25mm X 25mm

A traditional style of handle which drops down when not in use and adds a touch of class to any drawer front in a kitchen, dining room or study. The Natural Smooth finish will compliment a whole host of bright colours and wood styles. Supplied complete with M4 screws.



**83535**  
NATURAL  
SMOOTH



83535 - Natural Smooth Finish

### CABINET HANDLE

OVERALL SIZE: 79mm X 44mm

PROJECTION: 44mm

The Natural Smooth finish breathes new life into a traditional style of cabinet handle and helps to create a stylish, uniform look when used in conjunction with our other Natural Smooth products. Supplied complete with an M4 screw.



**83531**  
NATURAL  
SMOOTH

83531 - Natural Smooth Finish





## RIM/MORTICE DOOR KNOBS

ROUND KNOBS - *Page 47*

OCTAGONAL KNOBS - *Page 47*

OVAL KNOBS - *Page 47*

RINGED KNOB - *Page 48*

BUN KNOB - *Page 48*

MUSHROOM KNOB - *Page 48*

FLOWER KNOBS - *Page 49*

*From The Anvil - Door Furniture*



33643 (Octagonal Mortice/Rim Knob Set)

## ROUND MORTICE/RIM KNOB SET

KNOB SIZE: 41MM  
 PROJECTION: 70MM  
 ROSE SIZE: 60MM  
 SPINDLE SIZE: 8MM (THREADED)

Supplied complete with two loose roses to enable them to be used with a large rim lock (pages 50-53) or mortice locks (page 102), two round knobs and two escutcheons. Threaded spindles for various door thicknesses (up to 60mm) and fixing screws.



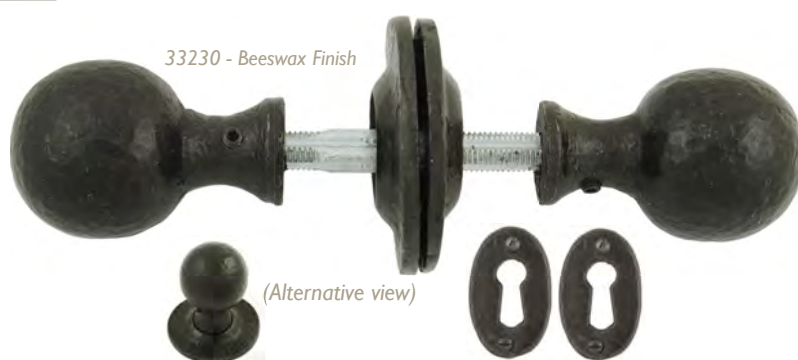
**33230**  
BEESWAX



**33252**  
BLACK



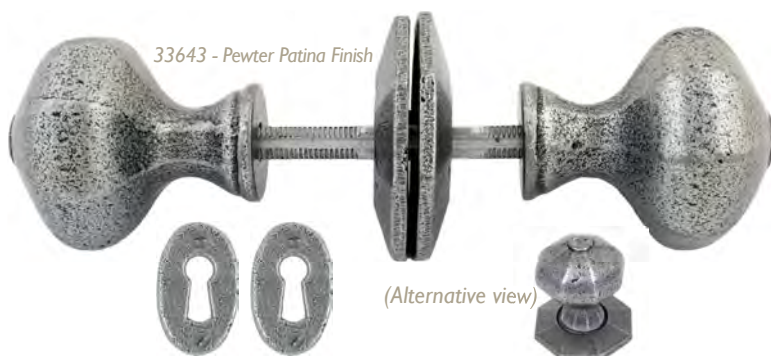
**33778**  
PEWTER PATINA



## OCTAGONAL MORTICE/RIM KNOB SET

KNOB SIZE: 54MM  
 PROJECTION: 63MM  
 ROSE SIZE: 57MM  
 SPINDLE SIZE: 8MM (THREADED)

Supplied complete with two loose roses to enable them to be used with a large rim lock (pages 50-53) or mortice locks (page 102), two octagonal knobs and two escutcheons. Threaded spindles for various door thicknesses (up to 60mm) and fixing screws.



**33228**  
BEESWAX



**33250**  
BLACK



**33643**  
PEWTER PATINA

## OVAL MORTICE/RIM KNOB SET

KNOB SIZE: 63MM X 38MM  
 PROJECTION: 54MM  
 ROSE SIZE: 60MM  
 SPINDLE SIZE: 8MM (THREADED)

Supplied complete with two loose roses to enable them to be used with a large rim lock (pages 50-53) or mortice locks (page 102), two oval knobs and two escutcheons. Threaded spindles for various door thicknesses (up to 60mm) and fixing screws.



**33229**  
BEESWAX



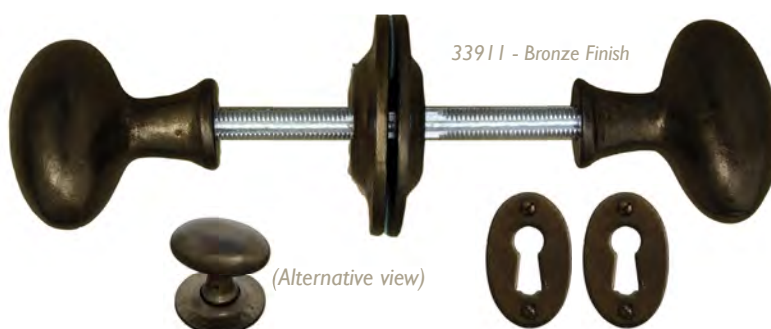
**33251**  
BLACK



**33644**  
PEWTER PATINA



**33911**  
BRONZE





## RINGED, BUN & MUSHROOM MORTICE/RIM KNOB SETS

83563 (Bun Rim Knob) & 83591 (Left Hand Rim Lock)



83573  
Rosewood &  
Antique Brass  
Finish



83574  
Ebony &  
Antique Brass  
Finish



83573 - Rosewood & Antique Brass Finish

### BEEHIVE MORTICE/RIM KNOB SET

KNOB SIZE: 58MM DIA.

PROJECTION: 83MM

ROSE SIZE: 58MM

SPINDLE SIZE: 8MM (THREADED)

An attractive Beehive Knob Set in either a richly hued Rosewood or a rich and dark Ebonised Finish. Supplied complete with detachable roses in a stylish Antique Brass Finish, a threaded spindle and matching fixing screws. Ideal for use with rim locks (pages 51-53) or mortice locks or latches (pages 101-102).



### BEEHIVE & HEAVY BEEHIVE MORTICE/RIM KNOB SET

KNOB SIZE: 67MM X 54MM DIA.

PROJECTION: 67MM

ROSE SIZE: 57MM

SPINDLE SIZE: 8MM (THREADED)

An attractive Beehive Knob Set in either a stylish Antique Brass Finish or a highly Polished Nickel Finish, with a choice of normal (hollow) or heavy (solid) feel. Supplied complete with detachable roses in a matching Finish, a threaded spindle and matching fixing screws. Ideal for use with rim locks (pages 51-53) or mortice locks or latches (pages 101-102).



83633  
ANTIQUE  
BRASS

83636  
POLISHED  
NICKEL

83633H  
ANTIQUE  
BRASS

83636H  
POLISHED  
NICKEL



83633  
Antique  
Brass Finish



83636  
Polished  
Nickel Finish



83633 - Antique Brass Finish

### RINGED MORTICE/RIM KNOB SET

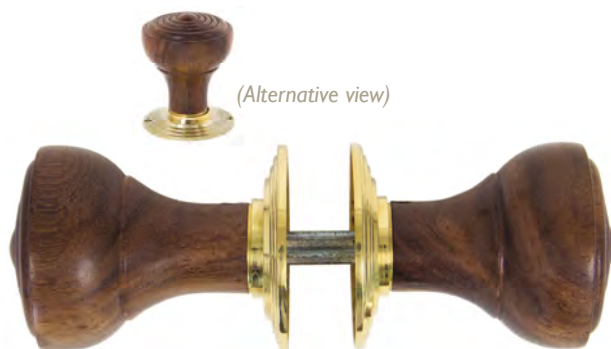
KNOB SIZE: 70MM X 54MM DIA.

PROJECTION: 70MM

ROSE SIZE: 67MM

SPINDLE SIZE: 8MM (THREADED)

An attractive, richly hued ringed Rosewood knob set. Supplied complete with detachable brass roses, two lengths of threaded spindle (120mm for use with rim locks - page 52 & 100mm for use with mortice locks & latches - page 102) and brass fixing screws.



(Alternative view)

83562 - Rosewood Finish



83562  
ROSEWOOD

# FLOWER MORTICE KNOB SETS



83561 (Flower Mortice Knob) & 33665 (Oval Escutcheon)

## BUN MORTICE/RIM KNOB SET

KNOB SIZE: 67MM X 54MM DIA.  
PROJECTION: 67MM  
ROSE SIZE: 57MM  
SPINDLE SIZE: 8MM (THREADED)

A rich, dark Ebonised bun knob set. Supplied complete with detachable brass roses, two lengths of threaded spindle (120mm for use with rim locks - page 52 & 100mm for use with mortice locks & latches - page 102) and brass fixing screws.



83563 - Ebony Finish

**83563**  
EBONY

## MUSHROOM MORTICE/RIM KNOB SET

KNOB SIZE: 51MM X 51MM DIA.  
PROJECTION: 51MM  
ROSE SIZE: 51MM  
SPINDLE SIZE: 8MM (THREADED)

Polished unlacquered brass knob set in very traditional mushroom style. Suitable to be used on any of our Rim Locks and looks particularly good on the Iron versions. Can also be used on their own with a latch and comes supplied with loose roses, two lengths of threaded spindle (120mm for use with rim locks - page 52 & 100mm for use with mortice locks & latches - page 102) and brass fixing screws.



**83564**  
POLISHED  
BRASS



83564 - Polished Brass Finish

## FLOWER MORTICE KNOB SET

KNOB SIZE: 76MM X 57MM DIA.  
PROJECTION: 76MM  
ROSE SIZE: 60MM  
SPINDLE SIZE: 90MM X 7MM

A traditional and classic 'flower' design has been given a new lease of life with two of our finishes, including the very desirable Natural Smooth. Can be matched up with our other Natural Smooth finished items to create a uniform look around the home. Use in conjunction with mortice locks & latches (page 102). Comes supplied as a set with two knobs and a spindle.



**83561**  
NATURAL  
SMOOTH

**83560**  
BLACK

## FLOWER MORTICE KNOB SET

KNOB SIZE: 70MM X 50MM DIA.  
PROJECTION: 67MM  
ROSE SIZE: 60MM  
SPINDLE SIZE: 8MM (THREADED)

A classic 'flower' design in a traditional unlacquered Polished Brass finish. Can be matched up with our other Brass finish items to create a uniform look around the home. Use in conjunction with mortice locks & latches (page 102). Comes supplied as a set with two knobs and a spindle.



**39010**  
POLISHED  
BRASS

## BOX & RIM LOCKS

OAK BOX LOCK - *Page 51*

RIM LOCK & COVER - *Page 51*

SPARE KEEPS - *Page 51*

RIM LOCKS - *Page 52-53*

BATHROOM RIM LATCHES - *Page 53*

*From The Anvil - Door Furniture*



33005



### OAK BOX LOCK & OCTAGONAL KNOB SET

Made from English oak, unstained and contains a five-lever British lock which offers excellent security. This product is reversible and comes complete with octagonal knobs and separate roses. For use on doors with a maximum thickness of 44mm. Thicker doors can be accommodated but you will need to contact us for an extra long key and spindle (chargeable service).

BOX LOCK: 223MM X 172MM  
KEEP SIZE: 223MM X 36MM  
FIXING CENTRES: 245MM  
STRAP LENGTH: 262MM  
SPINDLE CENTRE: 130MM  
LOCK CENTRE: 60MM



**33005**  
BLACK



**33004**  
PEWTER PATINA



33005 (Oak Box Lock - External View)

### RIM LOCK & CAST IRON COVER

RIM LOCK: 158MM X 103MM  
KEEP SIZE: 103MM X 21MM  
FIXING CENTRES: 133MM  
SPINDLE CENTRE: 115MM  
LOCK CENTRE: 53MM

This product consists of a two lever rim lock with a cast iron cover over the top. The lock mechanism is not insurance rated. This set is reversible and comes without knobs.



**33180**  
BEESWAX



**33299**  
BLACK  
SPARE KEEP  
33201



### LARGE KEEP

SIZE: 108MM X 29MM  
Spare keep or use as drawer pulls. Internal size of 89mm.



**33161**  
BEESWAX



### MEDIUM KEEP

SIZE: 108MM X 22MM  
Spare keep or use as drawer pulls. Internal size of 67mm.



**33156**  
BEESWAX

### RIM LOCK & COVER

RIM LOCK: 154MM X 108MM  
KEEP SIZE: 108MM X 20MM  
FIXING CENTRES: 132MM  
SPINDLE CENTRE: 108MM  
LOCK CENTRE: 44MM

This product consists of a two lever rim lock with a solid brass cover over the top. The lock mechanism is not insurance rated. This set is reversible and comes without knobs.



**35000**  
POLISHED BRASS



### SMALL KEEP

SIZE: 102MM X 19MM  
Spare keep or use as drawer pulls. Internal size of 54mm.

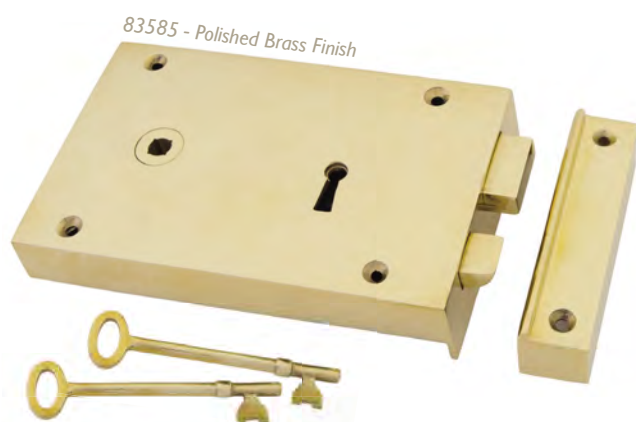


**33157**  
BEESWAX



## RIM LOCKS & BATHROOM LATCHES

83585 (Left Hand Rim Lock)



83585 - Polished Brass Finish

### LEFT HAND RIM LOCK - LARGE

RIM LOCK SIZE: 180MM X 112MM  
SPINDLE CENTRE: 137MM  
LOCK CENTRE: 60MM

A large traditional style rim lock which has a very heavy, solid feel to it. Cast from solid brass, or iron, with quality brass movements inside to produce a weighty, victorian style lock. Comes with two solid brass keys. Maximum door thickness of 55mm.



**83585**  
POLISHED  
BRASS

**83591**  
IRON

### RIGHT HAND RIM LOCK - LARGE

RIM LOCK SIZE: 180MM X 112MM  
SPINDLE CENTRE: 137MM  
LOCK CENTRE: 60MM

A large traditional style rim lock which has a very heavy, solid feel to it. Cast from solid brass, or iron, with quality brass movements inside to produce a weighty, victorian style lock. Comes with two solid brass keys. Maximum door thickness of 55mm.



**83588**  
POLISHED  
BRASS

**83592**  
IRON



83592 - Iron Finish



83577 - Polished Brass Finish

## LEFT HAND RIM LOCK - SMALL

RIM LOCK SIZE: 140MM X 86MM  
SPINDLE CENTRE: 97MM  
LOCK CENTRE: 42MM

A traditional, smaller style rim lock which keeps the very heavy, solid feel to it. Cast from solid brass, or iron, with quality brass movements inside to produce a weighty, victorian style lock. Comes with two solid brass keys. Maximum door thickness of 50mm.



**83577**  
POLISHED  
BRASS

**83583**  
IRON

## RIGHT HAND RIM LOCK - SMALL

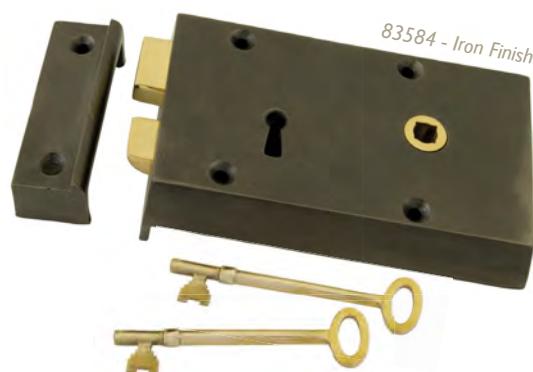
RIM LOCK SIZE: 140MM X 86MM  
SPINDLE CENTRE: 97MM  
LOCK CENTRE: 42MM

A traditional, smaller style rim lock which keeps the very heavy, solid feel to it. Cast from solid brass, or iron, with quality brass movements inside to produce a weighty, victorian style lock. Comes with two solid brass keys. Maximum door thickness of 50mm.

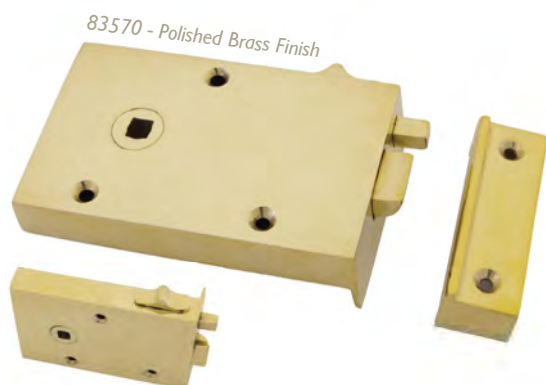


**83580**  
POLISHED  
BRASS

**83584**  
IRON



83584 - Iron Finish



83570 - Polished Brass Finish

## LEFT HAND BATHROOM LATCH

RIM LOCK SIZE: 128MM X 79MM  
SPINDLE CENTRE: 92MM

A traditional style bathroom or bedroom latch which has a heavy, solid feel to it. Cast from solid brass or iron with quality brass movements inside and a draw bolt at the top for slide across locking to produce a classy, victorian style latch.



**83570**  
POLISHED  
BRASS

**83575**  
IRON

## RIGHT HAND BATHROOM LATCH

RIM LOCK SIZE: 128MM X 79MM  
SPINDLE CENTRE: 92MM

A traditional style bathroom or bedroom latch which has a heavy, solid feel to it. Cast from solid brass or iron with quality brass movements inside and a brass draw bolt at the top for slide across locking to produce a classy, victorian style latch.



**83571**  
POLISHED  
BRASS

**83576**  
IRON



83576 - Iron Finish

## ESCUTCHEONS & THUMBTURNS

OVAL ESCUTCHEON - *Page 55*

OVAL ESCUTCHEON COVER - *Page 55*

DIAMOND ESCUTCHEON - *Page 55*

DIAMOND EURO ESCUTCHEON - *Page 55*

BEEHIVE ESCUTCHEON - *Page 56*

PLAIN ESCUTCHEON - *Page 56*

DIAMOND THUMBTURN - *Page 56*

*From The Anvil - Door Furniture*



33265



33613 (Diamond Escutcheon), 33612 (Monkeytail on Diamond) & 33007 (Horizontal Sash Lock)

## OVAL ESCUTCHEON

OVERALL SIZE: 51MM X 29MM  
THICKNESS: 2.5MM



**33231**  
BEESWAX



**33255**  
BLACK



**33665**  
PEWTER PATINA



33231 - Beeswax Finish

## OVAL ESCUTCHEON & COVER

OVERALL SIZE: 51MM X 29MM  
THICKNESS: 2.5MM  
COVER THICKNESS: 5MM



**33232**  
BEESWAX



**33254**  
BLACK



**33664**  
PEWTER PATINA



33254 - Black Finish

## DIAMOND ESCUTCHEON

OVERALL SIZE: 41MM  
THICKNESS: 2.5MM

Can be used in conjunction  
with Monkeytail on Diamond  
Rosette (see page 28).



**33965**  
BLACK



**33613**  
PEWTER PATINA



**33946**  
BRONZE



33613 - Pewter Patina Finish

## DIAMOND EURO ESCUTCHEON

OVERALL SIZE: 51MM  
THICKNESS: 2.5MM

Can be used in conjunction with Monkeytail  
on Diamond Rosette (see page 28).



**33236**  
BLACK



**33622**  
PEWTER PATINA



**33948**  
BRONZE



33948 - Bronze Finish

# BEEHIVE/PLAIN ESCUTCHEONS & DIAMOND BATHROOM THUMBTURN

83554 (Beehive Escutcheon)

## BEEHIVE ESCUTCHEON

OVERALL SIZE: 57MM X 25MM

A solid brass, decorative escutcheon plate with an intricate beehive style cover to stop wind from blowing in. Comes supplied with slotted brass screws.



83555 - Rosewood Finish



**83554**  
POLISHED  
BRASS



**83555**  
ROSEWOOD



**83556**  
EBONY

## PLAIN ESCUTCHEON

OVERALL SIZE: 48MM X 29MM

A solid brass, plain yet stylish escutcheon plate with a simple, oval cover to stop wind from blowing in. Comes supplied with slotted brass screws.



**83557**  
POLISHED  
BRASS



**83558**  
ROSEWOOD



**83559**  
EBONY



83557 - Polished Brass Finish

## DIAMOND BATHROOM THUMBTURN

FIXING PLATE: 51MM

PROJECTION: 35MM

SPINDLE SIZE: 5MM

Can be used in conjunction with Monkeytail on Diamond Rosette (see page 28) or as a stand alone item with deadbolts (see page 102).



**33265**  
BEESWAX



**33964**  
BLACK



**18336**  
PEWTER PATINA



**33950**  
BRONZE



18336 - Pewter Patina Finish

## DOOR KNOCKERS

PEAR SHAPED DOOR KNOCKER - *Page 58*

RING DOOR KNOCKER - *Page 58*

*From The Anvil - Door Furniture*



33908



33611 (Pear Shaped Door Knocker) & 33696 (Pyramid Door Studs)

### PEAR SHAPED DOOR KNOCKER

RING WIDTH: 95MM  
RING LENGTH: 133MM  
FIXING PLATE: 63MM

*The Pear shaped ring has been drawn from a single piece of steel to make it stronger. It shows every hammer blow by our highly skilled craftsmen and has an interesting twist detail at the bottom.*



**33218**  
BEESWAX



**33246**  
BLACK



**33611**  
PEWTER PATINA



33246 - Black Finish



33658 - Pewter Patina Finish

### RING DOOR KNOCKER

RING SIZE: 114MM  
FIXING PLATE: 121MM X 121MM

*The ring has been drawn from a single piece of steel which makes it very heavy and strong. It shows every hammer blow by our highly skilled craftsmen.*



**33217**  
BEESWAX



**33245**  
BLACK



**33658**  
PEWTER PATINA



**33908**  
BRONZE

33921



## LETTERPLATES & COVERS

HANDMADE LETTERPLATE - *Page 60*

HANDMADE LETTERPLATE COVER - *Page 60*

POSTAL LETTERPLATE - *Page 61*

ART DECO LETTERPLATE - *Page 61*

*From The Anvil - Door Furniture*



# HANDMADE LETTERPLATES & LETTERPLATE COVERS

33226 (Letterplate) & 33250 (Octagonal Mortice/Rim Knob)

## LETTERPLATE

OVERALL SIZE: 324MM X 108MM  
OPENING SIZE: 260MM X 44MM  
FIXING CENTRES: 292MM

*A sprung loaded large heavy duty letterplate with a rustic finish.*



**33209**  
BEESWAX



**33226**  
BLACK



**33680**  
PEWTER PATINA

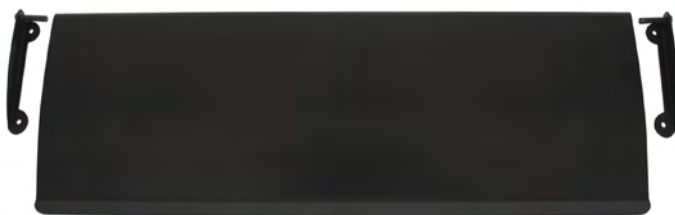


**33921**  
BRONZE

33680 - Pewter Patina Finish



33227 - Black Finish



## LETTERPLATE COVER

OVERALL SIZE: 355MM X 127MM

*This letterplate cover reduces drafts and helps to tidy up and improve the inside view of your door.*



**33210**  
BEESWAX



**33227**  
BLACK



**33681**  
PEWTER PATINA



**33922**  
BRONZE

# POSTAL & ART DECO LETTERPLATES



83544 (Postal Letterplate)

## POSTAL LETTERPLATE



83544 - Polished Brass Finish

OVERALL SIZE: 300mm X 115mm  
OPENING SIZE: 204mm X 40mm  
FIXING CENTRES: 250mm

*A decorative letterplate made from solid brass which also incorporates a traditional style, yet ornate door knocker. This product is unlacquered.*



**83544**  
POLISHED  
BRASS

## ART DECO LETTERPLATE

OVERALL SIZE: 304mm X 85mm  
OPENING SIZE: 200mm X 48mm  
FIXING CENTRES: 253mm

*A simple yet stylish, Art Deco inspired letterplate made from solid brass which also incorporates a traditional door knocker. This product is unlacquered.*



**83545**  
POLISHED  
BRASS

83545 - Polished Brass Finish





## NAILS, STUDS & DOOR GRILLS

ROSEHEAD NAILS - Page 63

HANDMADE NAILS - Page 63

PYRAMID DOOR STUDS - Page 64

RAISED DOOR GRILL - Page 64

*From The Anvil - Door Furniture*

### 3" ROSEHEAD NAIL

SIZE: 82MM

HEAD SIZE: 11MM X 8MM

Finished with black oxide. Externally may be prone to grey staining and bleeding, especially in oak. Sold in kilos - Average quantity 84



**28338**  
BLACK OXIDE



### 2.5" ROSEHEAD NAIL

SIZE: 67MM

HEAD SIZE: 10MM X 7MM

Finished with black oxide. Externally may be prone to grey staining and bleeding, especially in oak. Sold in kilos - Average quantity 105



**28335**  
BLACK OXIDE



### 2" ROSEHEAD NAIL

SIZE: 54MM

HEAD SIZE: 11MM X 8MM

Finished with black oxide. Externally may be prone to grey staining and bleeding, especially in oak. Sold in kilos - Average quantity 158



**28336**  
BLACK OXIDE



### 1.5" ROSEHEAD NAIL

SIZE: 40MM

HEAD SIZE: 8MM X 7MM

Finished with black oxide. Externally may be prone to grey staining and bleeding, especially in oak. Sold in kilos - Average quantity 320



**28337**  
BLACK OXIDE



### 1" ROSEHEAD NAIL

SIZE: 25MM

HEAD SIZE: 7MM X 7MM

Finished with black oxide. Externally may be prone to grey staining and bleeding, especially in oak. Sold in kilos - Average quantity 475



**28334**  
BLACK OXIDE



### 1" HANDMADE NAIL

HEAD DIAMETER: 16MM

Fashioned from a single piece of steel for strength. If used externally will cause grey staining and bleeding. Sold in singles.



**33191**  
BEESWAX



## ROSEHEAD & HANDMADE NAILS



Rosehead Nails, Handmade Nails & Pyramid Door Studs

### 3" HANDMADE NAIL

HEAD DIAMETER: 25MM

Pewter & Black can be used externally and are less prone to grey staining and bleeding. Sold in singles.



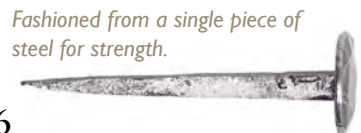
**33135**  
BEESWAX



**33833**  
BLACK



**33776**  
PEWTER



### 2" HANDMADE NAIL

HEAD DIAMETER: 22MM

Pewter & Black can be used externally and are less prone to grey staining and bleeding. Sold in singles.



**33134**  
BEESWAX



**33832**  
BLACK



**33775**  
PEWTER



### 1" HANDMADE NAIL

HEAD DIAMETER: 19MM

Pewter & Black can be used externally and are less prone to grey staining and bleeding. Sold in singles.



**33192**  
BEESWAX



**33831**  
BLACK



**33777**  
PEWTER





## DOOR GRILL & STUDS

33155 (Door Grill)

33696 - Pewter Patina Finish



### PYRAMID DOOR STUD - LARGE

SIZE: 25MM X 25MM

Pyramid door studs are easily fitted by way of a drive in-spike, unlike other studs on the market which have screw fixings.



**33195**  
BLACK

**33696**  
PEWTER PATINA

33194 - Black Finish



### PYRAMID DOOR STUD - MEDIUM

SIZE: 22MM X 22MM

Pyramid door studs are easily fitted by way of a drive in-spike, unlike other studs on the market which have screw fixings.



**33194**  
BLACK

**33695**  
PEWTER PATINA

33694 - Pewter Patina Finish



### PYRAMID DOOR STUD - SMALL

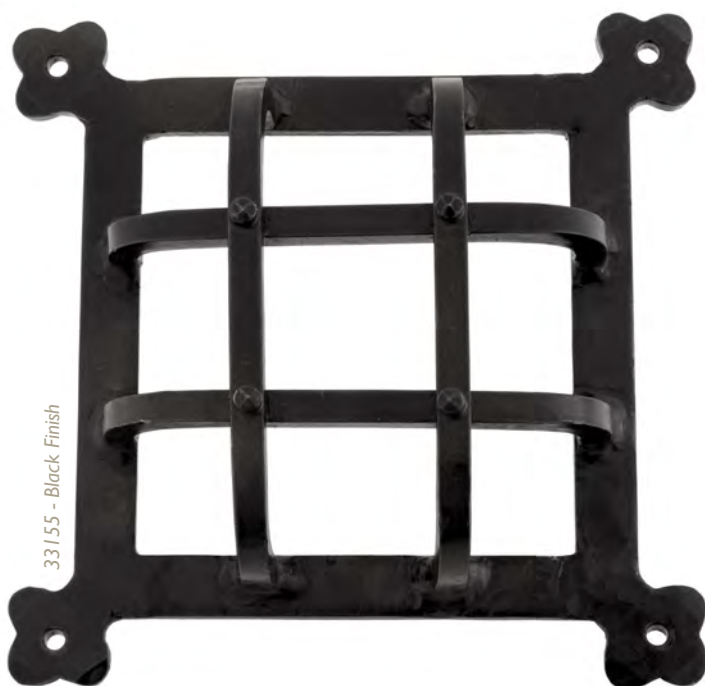
SIZE: 15MM X 15MM

Pyramid door studs are easily fitted by way of a drive in-spike, unlike other studs on the market which have screw fixings.



**33193**  
BLACK

**33694**  
PEWTER PATINA



33155 - Black Finish

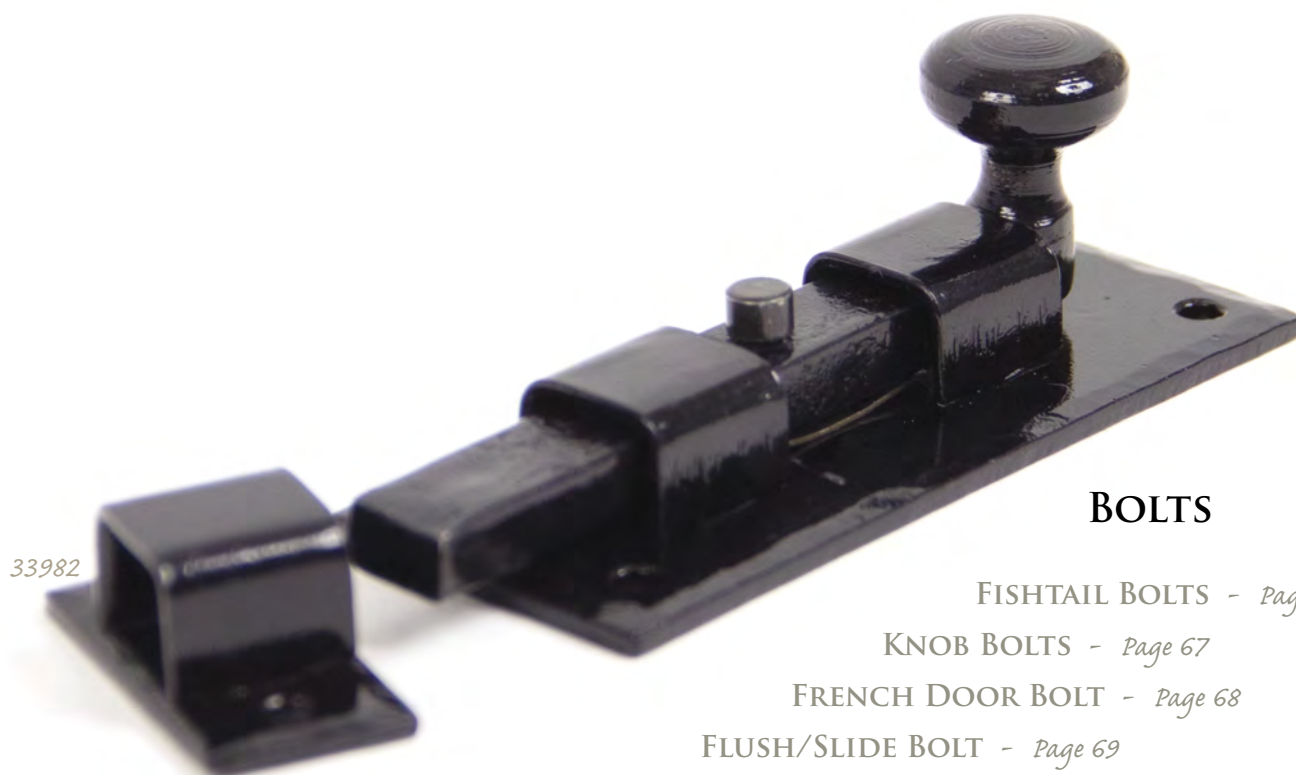
### RAISED DOOR GRILL

OVERALL SIZE: 171MM X 171MM  
INTERNAL SIZE: 102MM X 102MM  
PROJECTION: 44MM

A very traditional item of door furniture that has been hand forged in steel to give strength and a quality unsurpassed by other door grills on today's market. Ideal for an imposing front or back door and gives the entrance to your home the feeling of grandeur.



**33155**  
BLACK



33982

## BOLTS

FISHTAIL BOLTS - Page 66

KNOB BOLTS - Page 67

FRENCH DOOR BOLT - Page 68

FLUSH/SLIDE BOLT - Page 69

SLIDE BOLT - Page 69

*From The Anvil - Door Furniture*



## FISHTAIL BOLTS

33662 (6" Cranked Door Bolt)

### 6" CRANKED DOOR BOLT

FIXING PLATE: 159MM X 51MM  
RECEIVER PLATE: 51MM X 25MM

For outward opening doors. Can be used horizontally or vertically. All bolts are sold complete with fixing screws.



**33128**  
BEESWAX

**33016**  
BLACK

**33662**  
PEWTER PATINA

**33907**  
BRONZE



33662 - Pewter Patina Finish

### 4" CRANKED DOOR BOLT

FIXING PLATE: 90MM X 36MM  
RECEIVER PLATE: 32MM X 19MM

For outward opening doors. Can be used horizontally or vertically. All bolts are sold complete with fixing screws.



**33129**  
BEESWAX

**33014**  
BLACK

**33659**  
PEWTER PATINA

**33905**  
BRONZE



33905 - Bronze Finish

### 6" STRAIGHT DOOR BOLT

FIXING PLATE: 159MM X 51MM  
RECEIVER BRIDGE: 54MM X 16MM

For inward opening doors. Can be used horizontally or vertically. All bolts are sold complete with fixing screws.



**33126**  
BEESWAX

**33015**  
BLACK

**33663**  
PEWTER PATINA

**33906**  
BRONZE



33126 - Beeswax Finish

### 4" STRAIGHT DOOR BOLT

FIXING PLATE: 90MM X 36MM  
RECEIVER BRIDGE: 41MM X 16MM

For inward opening doors. Can be used horizontally or vertically. All bolts are sold complete with fixing screws.



**33127**  
BEESWAX

**33013**  
BLACK

**33660**  
PEWTER PATINA

**33904**  
BRONZE



33013 - Black Finish

# KNOB BOLTS

33723 (6" Straight Knob Bolt)



## 6" STRAIGHT KNOB BOLT

FIXING PLATE: 158MM X 51MM  
 RECEIVER BRIDGE: 51MM X 19MM

*These knob bolts are tight fitting, well made and have a unique spring mechanism. For inward opening doors.*



**33261**  
 BEESWAX



**33980**  
 BLACK



**33723**  
 PEWTER PATINA

## 4" STRAIGHT KNOB BOLT

FIXING PLATE: 90MM X 36MM  
 RECEIVER BRIDGE: 34MM X 19MM

*These knob bolts are tight fitting, well made and have a unique spring mechanism. For inward opening doors.*



**33262**  
 BEESWAX



**33982**  
 BLACK



**33720**  
 PEWTER PATINA

## 6" CRANKED KNOB BOLT

FIXING PLATE: 158MM X 51MM  
 RECEIVER PLATE: 51MM X 25MM

*These knob bolts are tight fitting, well made and have a unique spring mechanism. For outward opening doors.*



**33263**  
 BEESWAX



**33979**  
 BLACK



**33724**  
 PEWTER PATINA



## 4" CRANKED KNOB BOLT

FIXING PLATE: 90MM X 36MM  
 RECEIVER PLATE: 34MM X 19MM

*These knob bolts are tight fitting, well made and have a unique spring mechanism. For outward opening doors.*



**33264**  
 BEESWAX

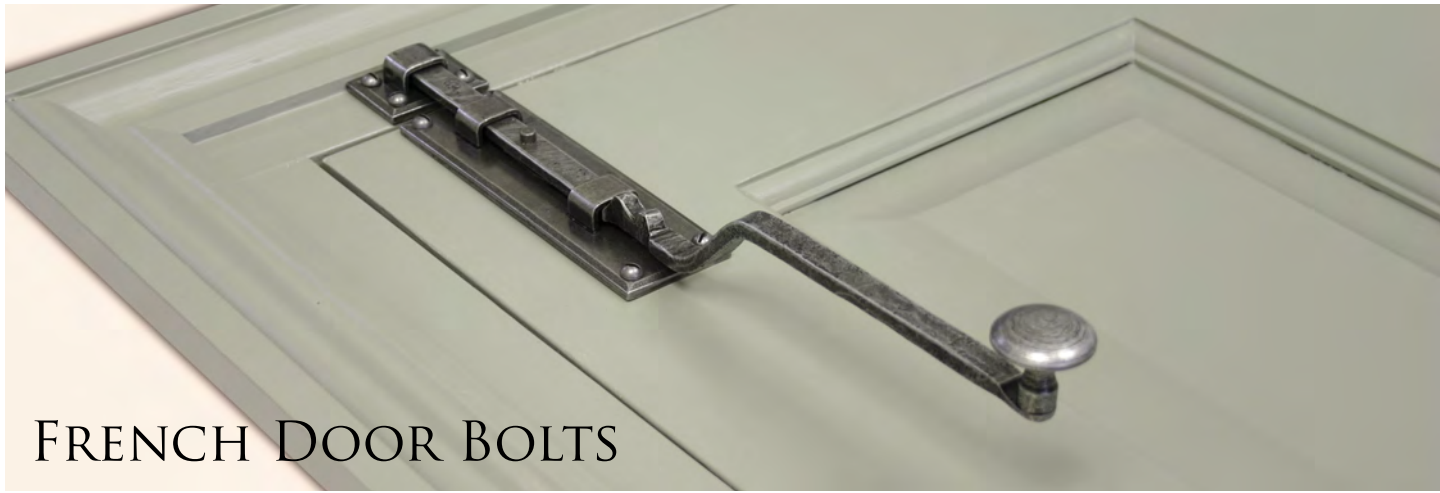


**33981**  
 BLACK



**33721**  
 PEWTER PATINA





# FRENCH DOOR BOLTS

33623 (6" French Door Bolt)

## 6" FRENCH DOOR BOLT

FIXING PLATE: 153MM X 48MM  
RECEIVER BRIDGE: 48MM X 36MM  
OVERALL BOLT LENGTH: 380MM

*These beautifully crafted bolts have a long cranked handle for ease of use and have a backplate which is 5mm thick. They have a very strong spring for positive action and look elegant on any type of door, painted or natural. Used on inward opening doors but angled keeps are available for outward opening doors (see below).*



**33855**  
BEESWAX



**33113**  
BLACK



**33623**  
PEWTER PATINA



33113 - Black Finish

## ANGLED KEEPS

SIZE: 46MM X 17MM  
DEPTH: 15MM

*For use with outward opening doors.*



33110 - Black Finish



**33110**  
BLACK



**33711**  
PEWTER PATINA

## 10" FRENCH DOOR BOLT

FIXING PLATE: 240MM X 48MM  
RECEIVER BRIDGE: 48MM X 36MM  
OVERALL BOLT LENGTH: 435MM

*These beautifully crafted bolts have a long cranked handle for ease of use and have a backplate which is 5mm thick. They have a very strong spring for positive action and look elegant on any type of door, painted or natural. Used on inward opening doors but angled keeps are available for outward opening doors (see above).*



33624 - Pewter Patina Finish



**33857**  
BEESWAX



**33114**  
BLACK



**33624**  
PEWTER PATINA



83566 (8" Slide Bolt)

## FLUSH/SLIDE BOLTS

### 12" FLUSH/SLIDE DOOR BOLT

OVERALL SIZE: 308MM X 20MM

RETURN LENGTH: 32MM

RECEIVER PLATE: 35MM X 20MM

SHOOT BOLT DIAMETER: 9MM

Made from solid steel to give strength and to match our finishes. This flush bolt can be used on sliding/folding door systems. Maximum depth of cut out is 18mm and can be fixed to either the door face or edge.

Side View



33627 - Pewter Patina Finish



**33627**  
PEWTER PATINA

### 6" FLUSH BOLT

OVERALL SIZE: 154MM X 19MM

RETURN LENGTH: 15MM

RECEIVER PLATE: 42MM X 19MM

SHOOT BOLT DIAMETER: 11MM

This product is completely unique to From The Anvil. The faceplate is made from stainless steel to give strength, PVD coated and finished in black. This flush bolt can be used on sliding/folding door systems. Maximum depth of cut out is 25mm and can be fixed to either the door face or edge.

Side View



41613 - Black Finish



**41613**  
BLACK

### 8" SLIDE BOLT

BOLT LENGTH: 190MM

FIXING PLATE: 200MM X 44MM

RECEIVER BRIDGE: 54MM X 19MM (PROJECTION: 25MM)

RECEIVER PLATE: 44MM X 25MM

A very solid and chunky looking slide bolt, with a smooth action and a quality Antique Brass finish. Cast from solid brass and comes with a receiver bridge and also a receiver plate to suit both inward and outward opening doors.

83566 - Antique Brass Finish



**83566**  
ANTIQUE  
BRASS

## HOOKS

GOTHIC HOOKS - *Page 71*

FLEUR-DE-LYS HOOKS - *Page 71*

HAT & COAT HOOKS - *Page 72*

CUP HOOKS - *Page 73*

'L' HOOKS - *Page 73*

CABIN HOOKS - *Page 74*

*From The Anvil - Door Furniture*



83523

# GOTHIC & FLEUR-DE-LYS HOOKS



33122 (Gothic Hook)

## GOTHIC HOOK

33688 - Pewter Patina Finish



OVERALL HEIGHT: 120MM  
PROJECTION: 50MM

*This hook is based on Gothic architecture, with its 'pointed arch' styling and has a fine curled over detail at the end of the hook.*



**33122**  
BEESWAX



**33963**  
BLACK



**33688**  
PEWTER PATINA

## FLEUR-DE-LYS HOOK

OVERALL HEIGHT: 114MM  
PROJECTION: 51MM

*The Fleur-de-lys design of this hook lends itself well to fixing a number of them to a piece of reclaimed oak and using in a hallway or kitchen.*



33121 - Beeswax Finish



**33121**  
BEESWAX



**33834**  
BLACK



**33722**  
PEWTER PATINA



## HAT & COAT HOOKS

83543 (Hat & Coat Hook) & 83523 (Coat Hook)

### COAT HOOK

FIXING PLATE: 48MM X 38MM  
PROJECTION: 70MM

A stylish little coat hook which can be used in a multitude of places like bathrooms, wardrobes and children's rooms etc. Simple yet strong enough to hold a number of items and looks great in any of the four finishes.

83523 - Natural Smooth Finish



83522 - Black Finish



**33858**  
BEESWAX



**83522**  
BLACK



**83523**  
NATURAL  
SMOOTH



**83524**  
POLISHED  
BRASS

### HAT & COAT HOOK

FIXING PLATE: 44MM X 38MM  
OVERALL HEIGHT: 165MM  
PROJECTION: 86MM

A simple hat and coat hook with acorn style ends and cast to be very strong and durable. Looks fantastic with four or five hooks fixed to an old piece of oak, natural or painted and hung near a front door or in a porch.



**83542**  
BLACK



**83543**  
NATURAL  
SMOOTH



**83525**  
POLISHED  
BRASS



83543 - Natural Smooth Finish

### HAT & COAT HOOK

OVERALL HEIGHT: 197MM  
PROJECTION: 108MM

A large number of items can be placed on this product due to its size and strength.



**33248**  
BEESWAX



**33249**  
BLACK

33248 - Beeswax Finish



# CUP & 'L' HOOKS



33221 (Cup Hook)



33220 - Beeswax Finish

## CUP HOOK - LARGE

OVERALL SIZE: 89MM X 44MM

*This ornate cup hook has a decorative twist in the upright and a nice little curl at the top of the hook. Fixed by way of a drive-in spike.*



**33220**  
BEESWAX



**33835**  
BLACK



**33800**  
PEWTER PATINA



33222 - Beeswax Finish

## CUP HOOK - SMALL

OVERALL SIZE: 44MM X 25MM

*This ornate cup hook has a decorative twist in the upright and a nice little curl at the top of the hook. Fixed by way of a drive-in spike.*



**33222**  
BEESWAX



**33837**  
BLACK



**33804**  
PEWTER PATINA



33836 - Black Finish

## CUP HOOK - MEDIUM

OVERALL SIZE: 51MM X 32MM

*This ornate cup hook has a decorative twist in the upright and a nice little curl at the top of the hook. Fixed by way of a drive-in spike.*



**33221**  
BEESWAX



**33836**  
BLACK



**33801**  
PEWTER PATINA

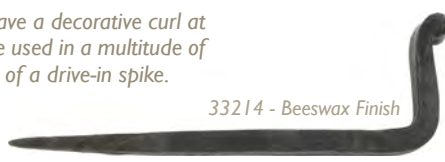
## 'L' HOOK - LARGE

OVERALL SIZE: 82MM X 32MM

*'L' shaped hooks have a decorative curl at the end and can be used in a multitude of ways. Fixed by way of a drive-in spike.*



**33214**  
BEESWAX



33214 - Beeswax Finish

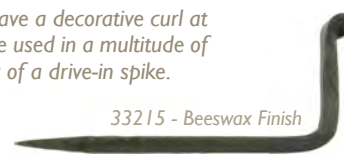
## 'L' HOOK - SMALL

OVERALL SIZE: 70MM X 32MM

*'L' shaped hooks have a decorative curl at the end and can be used in a multitude of ways. Fixed by way of a drive-in spike.*



**33215**  
BEESWAX



33215 - Beeswax Finish



83540 (5" Cabin Hook)

## CABIN HOOKS

### 8" CABIN HOOK

HOOK LENGTH: 202MM  
FIXING PLATES: 41MM X 41MM

*Stylish and practical, this cabin hook is made from solid brass and looks elegant on either a painted or natural wood door.*



83546 - Polished Brass Finish



**83546**  
POLISHED  
BRASS

### 6" CABIN HOOK

HOOK LENGTH: 154MM  
FIXING PLATES: 32MM X 32MM

*Stylish and practical, this cabin hook is made from solid brass and looks elegant on either a painted or natural wood door.*



83547 - Polished Brass Finish

**83547**  
POLISHED  
BRASS

### 4" CABIN HOOK

HOOK LENGTH: 100MM  
FIXING PLATES: 29MM X 29MM

*Stylish and practical, this cabin hook is made from solid brass and looks elegant on either a painted or natural wood door.*



83548 - Polished Brass Finish



**83548**  
POLISHED  
BRASS

### 3" CABIN HOOK

HOOK LENGTH: 73MM  
FIXING PLATES: 29MM X 29MM

*Stylish and practical, this cabin hook is made from solid brass and looks elegant on either a painted or natural wood door.*



83549 - Polished Brass Finish

**83549**  
POLISHED  
BRASS

### 5" CABIN HOOK

HOOK LENGTH: 127MM  
FIXING PLATES: 35MM X 35MM

*Stylish and practical, this cabin hook looks elegant in either the Black or the Natural Smooth finish.*



83541 - Natural Smooth Finish

**83540**  
BLACK

**83541**  
NATURAL  
SMOOTH



## CUPBOARD KNOBS, LATCHES & TURNS

BEATEN CUPBOARD KNOBS - *Page 76*

HAMMERED KNOBS - *Page 76*

RIBBED KNOB - *Page 77*

OCTAGONAL KNOBS - *Page 77*

TWIST KNOB - *Page 77*

OVAL KNOB - *Page 77*

CABINET KNOBS & BASE - *Page 78*

CABINET KNOBS - *Page 78*

SPIRAL KNOBS - *Page 79*

CUPBOARD TURN - *Page 80*

CABINET LATCH - *Page 80*

*From The Anvil - Cupboard & Drawer Furniture*



## BEATEN & HAMMERED CUPBOARD KNOBS

33625 (Beaten Cupboard Knob)

### BEATEN CUPBOARD KNOB - LARGE

KNOB SIZE: 40MM  
PROJECTION: 31MM

*Suitable for hand-crafted cupboard doors.  
Sold as a single item with M4 screw.*



**33198**  
BEESWAX



**33993**  
BLACK



**33625**  
PEWTER PATINA



33625 - Pewter Patina Finish

### HAMMERED KNOB - LARGE

KNOB SIZE: 38MM  
PROJECTION: 30MM

*Suitable for hand-crafted cupboard doors. Sold as a single item with M4 screw. Matches pull handles on page 42.*



**83515**  
NATURAL  
SMOOTH



83515 - Natural Smooth

### BEATEN CUPBOARD KNOB - MEDIUM

KNOB SIZE: 30MM  
PROJECTION: 25MM

*Suitable for hand-crafted cupboard doors.  
Sold as a single item with M4 screw.*



**33197**  
BEESWAX



**33992**  
BLACK



**33626**  
PEWTER PATINA



33992 - Black Finish

### HAMMERED KNOB - SMALL

KNOB SIZE: 32MM  
PROJECTION: 28MM

*Suitable for hand-crafted cupboard doors. Sold as a single item with M4 screw. Matches pull handles on page 42.*



**83516**  
NATURAL  
SMOOTH



83516 - Natural Smooth

### BEATEN CUPBOARD KNOB - SMALL

KNOB SIZE: 20MM  
PROJECTION: 20MM

*Suitable for hand-crafted cupboard doors.  
Sold as a single item with M4 screw.*



**33196**  
BEESWAX



**33840**  
BLACK



**33705**  
PEWTER PATINA



33196 - Beeswax Finish

New Finish Available

# TWIST, RIBBED, OVAL & OCTAGONAL CUPBOARD KNOBS

33223 (Oval Knob)

## RIBBED CABINET KNOB

OVERALL SIZE: 32MM  
PROJECTION: 21MM

*Suitable for hand-crafted cupboard doors. Sold as a single item with M4 screw. Matches pull handles on page 44.*



83536 - Natural Smooth

**83536**  
NATURAL  
SMOOTH

## OCTAGONAL CABINET KNOB - LARGE

OVERALL SIZE: 38MM  
PROJECTION: 38MM

*Suitable for hand-crafted cupboard doors. Sold as a single item with M4 screw. Matches pull handles on page 43.*



83538 - Natural Smooth

**83538**  
NATURAL  
SMOOTH

## OCTAGONAL CABINET KNOB - SMALL

OVERALL SIZE: 32MM  
PROJECTION: 38MM

*Suitable for hand-crafted cupboard doors. Sold as a single item with M4 screw. Matches pull handles on page 43.*



83537 - Natural Smooth

**83537**  
NATURAL  
SMOOTH

## TWIST KNOB

KNOB SIZE: 30MM  
PROJECTION: 41MM

*Suitable for hand-crafted cupboard doors. Sold as a single item with M4 screw.*



33691 - Pewter Patina Finish

**33691**  
PEWTER PATINA

## OVAL KNOB

KNOB SIZE: 40MM X 30MM  
PROJECTION: 35MM

*Suitable for hand-crafted cupboard doors. Sold as a single item with M4 screw.*



33223 - Beeswax Finish

**33223**  
BEESWAX

## CABINET KNOBS

83550 (Spiral Cabinet Knob)

## CABINET KNOB (WITH BASE) - LARGE

OVERALL SIZE: 44MM X 38MM DIA.

BASE SIZE: 38MM

PROJECTION: 44MM

A cabinet knob with removable base which looks great on painted cupboards in the kitchen, bathroom or bedroom and compliments the Flower Knob Set by giving the room a uniform look and a stylish feel. Supplied complete with an M4 screw.

**83509**  
BLACK**83510**  
NATURAL  
SMOOTH

83510 - Natural Smooth Finish



## CABINET KNOB (WITH BASE) - SMALL

OVERALL SIZE: 41MM X 32MM DIA.

BASE SIZE: 35MM

PROJECTION: 41MM

A slightly smaller version of the cabinet knob with a removable base. Compliments our other Natural Smooth and Black finish products and helps to create a stylish look and feel anywhere around the home. Supplied complete with an M4 screw.

83507 - Black Finish

**83507**  
BLACK**83508**  
NATURAL  
SMOOTH

## CABINET KNOB - LARGE

OVERALL SIZE: 36MM X 38MM DIA.

PROJECTION: 36MM

An exceptionally stylish, machined cabinet knob which gives a desirable and contemporary feel. Ideal on larger cupboard doors, kitchen cabinets and a multitude of other areas. A great addition to any room and manufactured to a very high quality. Supplied complete with an M4 screw.

**83513**  
BLACK**83514**  
NATURAL  
SMOOTH

83514 - Natural Smooth Finish



## CABINET KNOB - SMALL

OVERALL SIZE: 29MM X 32MM DIA.

PROJECTION: 29MM

A slightly smaller contemporary, machined cabinet knob which gives a desirable and stylish feel. Ideal on a painted chest of drawers, kitchen cabinets or a multitude of other areas. A great addition to any room and manufactured to a very high quality. Supplied complete with an M4 screw.

83511 - Black Finish

**83511**  
BLACK**83512**  
NATURAL  
SMOOTH

# SPIRAL CABINET KNOBS

83550 (Spiral Cabinet Knob)

## LARGE SPIRAL CABINET KNOB

DIAMETER: 45MM  
PROJECTION: 66MM

*A high quality, large spiral knob ideal for use on cabinets and drawer fronts. Made from solid, heavy brass and supplied complete with an M4 screw.*



**83552**  
POLISHED  
BRASS



83552 - Polished Brass Finish

## MEDIUM SPIRAL CABINET KNOB

DIAMETER: 38MM  
PROJECTION: 58MM

*A high quality, medium sized spiral knob ideal for use on cabinets and drawer fronts. Made from solid, heavy brass and supplied complete with an M4 screw.*



**83551**  
POLISHED  
BRASS



83551 - Polished Brass Finish

## SMALL SPIRAL CABINET KNOB

DIAMETER: 32MM  
PROJECTION: 45MM

*A high quality, small spiral knob ideal for use on cabinets and drawer fronts. Made from solid, heavy brass and supplied complete with an M4 screw.*



**83550**  
POLISHED  
BRASS



83550 - Polished Brass Finish

# CUPBOARD TURN & CABINET LATCH



33115 (Cupboard Turn)

33684 - Pewter Patina Finish



## CUPBOARD TURN

FIXING PLATES: 56MM X 20MM  
PROJECTION: 40MM

*A stylish, little cupboard turn designed to hold two doors together. Shows all the hand-crafted detail of our skilled blacksmiths.*



**33115**  
BLACK

**33684**  
PEWTER PATINA

83518 - Natural Smooth Finish



## CABINET LATCH

OVERALL SIZE: 55MM X 41MM  
PROJECTION: 37MM  
KEEP SIZE: 55MM X 15MM

*A strong and stylish little cabinet latch, ideal for cupboard doors. Comes supplied with fixing screws. Fashioned from cast iron and has a smooth natural iron finish.*



**83518**  
NATURAL  
SMOOTH



33469

## WINDOW FASTENERS & ACCESSORIES

MORTICE PLATE - *Page 82*

HOOK PLATE - *Page 82*

PEARDROP FASTENER - *Page 82*

MONKEYTAIL FASTENERS - *Page 83*

LOCKING MONKEYTAIL FASTENERS - *Page 84*

NIGHT VENTING

MONKEYTAIL FASTENERS - *Page 84*

SHEPHERD'S CROOK FASTENER - *Page 85*

LOCKING SHEPHERD'S CROOK FASTENER - *Page 85*

*From The Anvil - Window Furniture*

# PEARDROP, MONKEYTAIL & SHEPHERD'S CROOK FASTENERS & ACCESSORIES



33709 (Shepherd's Crook Locking Fastener - Right Hand)

## MORTICE PLATE

OVERALL SIZE: 76MM X 19MM  
*Sold as a single item with beeswaxed screws.*



33773 - Pewter Patina Finish

**33140P** **33773**  
BEESWAX PEWTER PATINA

## HOOK PLATE

OVERALL SIZE: 57MM X 19MM  
*For use on windows without a central mullion. Sold as a single item with matching screws.*



33237 - Beeswax Finish

**33237** **33284** **33669**  
BEESWAX BLACK PEWTER PATINA

## PEARDROP FASTENER

HANDLE LENGTH: 127MM  
FIXING PLATE: 60MM X 19MM  
MORTICE PLATE: 76MM X 19MM  
*This Peardrop Fastener is reversible so it can be used on either left or right handed windows. Ideal for windows with a draught seal.*



33290 - Black Finish

**33140** **33290** **33668** **33926**  
BEESWAX BLACK PEWTER PATINA BRONZE

## MONKEYTAIL FASTENER

HANDLE LENGTH: 108MM  
FIXING PLATE: 60MM X 19MM  
MORTICE PLATE: 76MM X 19MM

*This Monkeytail Fastener is reversible so it can be used on either left or right handed windows. Ideal for windows with a draught seal.*



**33142**  
BEESWAX



**33280**  
BLACK



**33676**  
PEWTER PATINA



33676 - Pewter Patina Finish

## MONKEYTAIL FASTENER

HANDLE LENGTH: 102MM  
FIXING PLATE: 55MM X 19MM  
MORTICE PLATE: 78MM X 21MM

*This solid brass Monkeytail Fastener is reversible and can be used on either left or right handed windows. Ideal for windows with a draught seal.*



**83593**  
POLISHED  
BRASS



**83565**  
ANTIQUE  
BRASS



83593 - Polished Brass Finish

33185 - Beeswax Finish



## MONKEYTAIL FASTENER LH

HANDLE SIZE: 114MM X 76MM  
FIXING PLATE: 60MM X 13MM  
MORTICE PLATE: 76MM X 19MM  
HOOK PLATE: 57MM X 19MM

*Non-Locking Monkeytail Fasteners are supplied complete with a Hook Plate, which allows fitting to a narrower frame, all fixing screws and a mortice plate.*



**33185**  
BEESWAX

## MONKEYTAIL FASTENER RH

HANDLE SIZE: 114MM X 76MM  
FIXING PLATE: 60MM X 13MM  
MORTICE PLATE: 76MM X 19MM  
HOOK PLATE: 57MM X 19MM

*Non-Locking Monkeytail Fasteners are supplied complete with a Hook Plate, which allows fitting to a narrower frame, all fixing screws and a mortice plate.*



**33186**  
BEESWAX



33186 - Beeswax Finish

33952 - Black Finish



## MONKEYTAIL FASTENER LH - LOCKING

HANDLE SIZE: 114MM X 76MM  
FIXING PLATE: 60MM X 13MM  
MORTICE PLATE: 76MM X 19MM  
HOOK PLATE: 57MM X 19MM

*Locking Monkeytail Fasteners are supplied complete with a Hook Plate, which allows fitting to a narrower frame, all fixing screws, a mortice plate and are lockable by way of a grub screw in the handle.*



**33211**  
BEESWAX



**33952**  
BLACK



**33725**  
PEWTER PATINA

## MONKEYTAIL FASTENER RH - LOCKING

HANDLE SIZE: 114MM X 76MM  
FIXING PLATE: 60MM X 13MM  
MORTICE PLATE: 76MM X 19MM  
HOOK PLATE: 57MM X 19MM

*Locking Monkeytail Fasteners are supplied complete with a Hook Plate, which allows fitting to a narrower frame, all fixing screws, a mortice plate and are lockable by way of a grub screw in the handle.*



**33212**  
BEESWAX



**33953**  
BLACK



**33726**  
PEWTER PATINA



33212 - Beeswax Finish

## NIGHT VENT LOCKING MONKEYTAIL FASTENER LH

HANDLE SIZE: 136MM X 44MM  
FIXING PLATE: 60MM X 16MM  
KEEP PLATE: 57MM X 16MM

*This product is screw fitted and there is no need for trickle vents. The keep plate will screw to a mullion with a 20mm flat, leaving more room for mouldings. They can be locked in the night-vent and closed positions with an allen key. The nylon washer behind the handle is designed to reduce friction.*



**33267**  
BEESWAX



**51417L**  
BLACK



**33618**  
PEWTER PATINA



51417L - Black Finish

## NIGHT VENT LOCKING MONKEYTAIL FASTENER RH

HANDLE SIZE: 136MM X 44MM  
FIXING PLATE: 60MM X 16MM  
KEEP PLATE: 57MM X 16MM

*This product is screw fitted and there is no need for trickle vents. The keep plate will screw to a mullion with a 20mm flat, leaving more room for mouldings. They can be locked in the night-vent and closed positions with an allen key. The nylon washer behind the handle is designed to reduce friction.*



**33268**  
BEESWAX



**51417R**  
BLACK



**33619**  
PEWTER PATINA



33619 - Pewter Patina Finish

## SHEPHERD'S CROOK FASTENER

HANDLE LENGTH: 101MM  
FIXING PLATE: 59MM X 19MM  
MORTICE PLATE: 76MM X 19MM

*This Shepherd's Crook Fastener is reversible so it can be used on either left or right handed windows. Ideal for windows with a draught seal.*



**33132**  
BEESWAX



**33956**  
BLACK



**33727**  
PEWTER PATINA



33132 - Beeswax Finish

33476 - Beeswax Finish



## SHEPHERD'S CROOK FASTENER LH - LOCKING

HANDLE SIZE: 104MM X 78MM  
FIXING PLATE: 70MM X 17MM  
MORTICE PLATE: 76MM X 19MM  
HOOK PLATE: 70MM X 17MM

*A new style of locking window fastener with a beautifully crafted Shepherd's Crook handle. Pack contains both mortice and hook plates for windows of various configurations i.e. with or without central mullion.*



**33476**  
BEESWAX



**33468**  
BLACK



**33710**  
PEWTER PATINA

## SHEPHERD'S CROOK FASTENER RH - LOCKING

HANDLE SIZE: 104MM X 78MM  
FIXING PLATE: 70MM X 17MM  
MORTICE PLATE: 76MM X 19MM  
HOOK PLATE: 70MM X 17MM

*A new style of locking window fastener with a beautifully crafted Shepherd's Crook handle. Pack contains both mortice and hook plates for windows of various configurations i.e. with or without central mullion.*



**33477**  
BEESWAX



**33469**  
BLACK



**33709**  
PEWTER PATINA



33709 - Pewter Patina Finish

WINDOW STAYS & ACCESSORIES

PEARDROP STAYS - *Page 87*

MONKEYTAIL STAYS - *Page 88-89*

SHEPHERD'S CROOK STAYS - *Page 90*

CRANKED STAY PIN - *Page 87, 88, 89, 90*

OFFSET STAY PIN - *Page 89*

*From The Anvil - Window Furniture*



# PEARDROP WINDOW STAYS



33149 (12" Peardrop Stay)

## 12" PEARDROP STAY

OVERALL LENGTH: 330MM  
FIXING PLATE: 57MM X 16MM

Our Peardrop Stays are of a very simple design but look very stylish on a painted or natural wood window and with matching fasteners, create that uniform look throughout your home.



**33149** BEESWAX    **33293** BLACK    **33679** PEWTER PATINA    **33925** BRONZE    **33751** POLISHED BRASS    **33754** POLISHED CHROME

## 10" PEARDROP STAY

OVERALL LENGTH: 267MM  
FIXING PLATE: 57MM X 16MM

Our Peardrop Stays are of a very simple design but look very stylish on a painted or natural wood window and with matching fasteners, create that uniform look throughout your home.



**33141** BEESWAX    **33292** BLACK    **33678** PEWTER PATINA    **33924** BRONZE    **33750** POLISHED BRASS    **33753** POLISHED CHROME

## 8" PEARDROP STAY

OVERALL LENGTH: 228MM  
FIXING PLATE: 57MM X 16MM

Our Peardrop Stays are of a very simple design but look very stylish on a painted or natural wood window and with matching fasteners, create that uniform look throughout your home.



**33148** BEESWAX    **33291** BLACK    **33677** PEWTER PATINA    **33923** BRONZE    **33749** POLISHED BRASS    **33752** POLISHED CHROME

## CRANKED STAY PIN

FIXING PLATE: 49MM X 12MM

To be used with flush fitting windows or on dummy pvc casements.



**33959** BLACK    **33614** PEWTER PATINA



33614 - Pewter Patina Finish

# HANDMADE MONKEYTAIL WINDOW STAYS



33281 (8" Monkeytail Stay)

## 12" HANDMADE MONKEYTAIL STAY

OVERALL LENGTH: 317MM  
FIXING PLATE: 57MM X 16MM

Our Monkeytail Stays are made from steel so they can be drawn down to a very fine point, reproducing traditional methods. Matching fasteners are available.



33632 - Pewter Patina Finish

**33144** BEESWAX  
**33283** BLACK  
**33632** PEWTER PATINA

## 10" HANDMADE MONKEYTAIL STAY

OVERALL LENGTH: 267MM  
FIXING PLATE: 57MM X 16MM

Our Monkeytail Stays are made from steel so they can be drawn down to a very fine point, reproducing traditional methods. Matching fasteners are available.



33282 - Black Finish

**33143** BEESWAX  
**33282** BLACK  
**33631** PEWTER PATINA

## CRANKED STAY PIN

FIXING PLATE: 49MM X 12MM  
To be used with flush fitting windows or on dummy pvc casements.



33614 - Pewter Patina Finish

**33959** BLACK  
**33614** PEWTER PATINA

## 8" HANDMADE MONKEYTAIL STAY

OVERALL LENGTH: 228MM  
FIXING PLATE: 57MM X 16MM

Our Monkeytail Stays are made from steel so they can be drawn down to a very fine point, reproducing traditional methods. Matching fasteners are available.



33139 - Beeswax Finish

**33139** BEESWAX  
**33281** BLACK  
**33630** PEWTER PATINA

# CAST MONKEYTAIL WINDOW STAYS



33453 (10" Monkeytail Stay)

## 12" MONKEYTAIL STAY

OVERALL LENGTH: 328MM  
FIXING PLATE: 45MM X 16MM

*This product is made from high quality materials and comes in four unlacquered finishes. Supplied complete with quality, fixing screws.*



83569 - Antique Brass Finish



**83596**  
POLISHED  
BRASS



**83569**  
ANTIQUE  
BRASS



**33472**  
BLACK



**33454**  
ANTIQUE  
PEWTER



## OFFSET STAY PIN

FIXING PLATE: 47MM X 12MM  
*For use on heavily moulded windows.*



**33457**  
POLISHED  
BRASS



**33459**  
BLACK



**33455**  
ANTIQUE  
PEWTER



33459 - Black Finish

## 10" MONKEYTAIL STAY

OVERALL LENGTH: 278MM  
FIXING PLATE: 45MM X 16MM

*This product is made from high quality materials and comes in four unlacquered finishes. Supplied complete with quality, fixing screws.*



33453 - Antique Pewter Finish



**83595**  
POLISHED  
BRASS



**83568**  
ANTIQUE  
BRASS



**33471**  
BLACK



**33453**  
ANTIQUE  
PEWTER



## CRANKED STAY PIN

FIXING PLATE: 48MM X 12MM  
*For flush fitting windows or dummy pvc casements.*



**33458**  
POLISHED  
BRASS



**33460**  
BLACK



**33456**  
ANTIQUE  
PEWTER



33458 - Polished Brass Finish

## 8" MONKEYTAIL STAY

OVERALL LENGTH: 228MM  
FIXING PLATE: 45MM X 16MM

*This product is made from high quality materials and comes in four unlacquered finishes. Supplied complete with quality, fixing screws.*



33470 - Black Finish



**83594**  
POLISHED  
BRASS



**83567**  
ANTIQUE  
BRASS



**33470**  
BLACK



**33452**  
ANTIQUE  
PEWTER



# SHEPHERD'S CROOK WINDOW STAYS



33606 (10" Shepherd's Crook Stay)

## 12" SHEPHERD'S CROOK STAY

OVERALL SIZE: 356MM  
FIXING PLATE: 57MM X 16MM

*This Stay has a very delicately, hand-crafted end detail that is unlike any other stay available and can be matched up with our window espagnolettes to create a very unique look.*



33607 - Pewter Patina Finish

-   
**33475**  
BEESWAX
-   
**33962**  
BLACK
-   
**33607**  
PEWTER PATINA

## 10" SHEPHERD'S CROOK STAY

OVERALL SIZE: 305MM  
FIXING PLATE: 57MM X 16MM

*This Stay has a very delicately, hand-crafted end detail that is unlike any other stay available and can be matched up with our window espagnolettes to create a very unique look.*



33961 - Black Finish

-   
**33474**  
BEESWAX
-   
**33961**  
BLACK
-   
**33606**  
PEWTER PATINA

## CRANKED STAY PIN

FIXING PLATE: 49MM X 12MM  
*To be used with flush fitting windows or on dummy pvc casements.*

-   
**33959**  
BLACK
-   
**33614**  
PEWTER PATINA



33614 - Pewter Patina Finish

## 8" SHEPHERD'S CROOK STAY

OVERALL SIZE: 260MM  
FIXING PLATE: 57MM X 16MM

*This Stay has a very delicately, hand-crafted end detail that is unlike any other stay available and can be matched up with our window espagnolettes to create a very unique look.*



33605 - Pewter Patina Finish

-   
**33473**  
BEESWAX
-   
**33960**  
BLACK
-   
**33605**  
PEWTER PATINA

## WINDOW ESPAGNOLETTES

PEARDROP ESPAGNOLETTES - *Page 92-93*

TEARDROP ESPAGNOLETTES - *Page 93*

MONKEYTAIL ESPAGNOLETTES - *Page 94*

SLIM MONKEYTAIL ESPAGNOLETTES - *Page 95*

DELUXE MONKEYTAIL ESPAGNOLETTES - *Page 95*

SHEPHERD'S CROOK ESPAGNOLETTES - *Page 96*

*From The Anvil - Window Furniture*

33243



# PEARDROP ESPAGNOLETTES



33683 (Peardrop Espagnolette - Right Hand)



33297 - Black Finish

## PEARDROP ESPAGNOLETTE - LH

OVERALL SIZE: 133MM X 45MM  
FIXING PLATE: 64MM X 20MM  
FIXING PLATE THICKNESS: 5MM

A very simple yet traditional style of window handle which is ideal for the modern era and looks great on any type of window, including uPVC and timber. Can be fitted to any modern espagnolette rod or stand-alone centre lock (see page 104). Sold complete with a 7mm x 60mm spindle and can be locked with a grub screw hidden under the handle.



**33297**  
BLACK

**33682**  
PEWTER PATINA

## PEARDROP ESPAGNOLETTE - RH

OVERALL SIZE: 133MM X 45MM  
FIXING PLATE: 64MM X 20MM  
FIXING PLATE THICKNESS: 5MM

A very simple yet traditional style of window handle which is ideal for the modern era and looks great on any type of window, including uPVC and timber. Can be fitted to any modern espagnolette rod or stand-alone centre lock (see page 104). Sold complete with a 7mm x 60mm spindle and can be locked with a grub screw hidden under the handle.



**33298**  
BLACK

**33683**  
PEWTER PATINA



33683 - Pewter Patina Finish

20419L - Polished Brass Finish



## PEARDROP ESPAGNOLETTE - LH

OVERALL SIZE: 127MM X 60MM  
FIXING PLATE: 57MM X 25MM  
FIXING PLATE THICKNESS: 6MM

A very simple yet traditional style of window handle which is ideal for the modern era and looks great on any type of window, including uPVC and timber. Can be fitted to any modern espagnolette rod or stand-alone centre lock (see page 104). Sold complete with a 7mm x 50mm spindle and can be locked with a grub screw hidden under the handle.



**20419L**  
POLISHED  
BRASS

**20415L**  
POLISHED  
CHROME

## PEARDROP ESPAGNOLETTE - RH

OVERALL SIZE: 127MM X 60MM  
FIXING PLATE: 57MM X 25MM  
FIXING PLATE THICKNESS: 6MM

A very simple yet traditional style of window handle which is ideal for the modern era and looks great on any type of window, including uPVC and timber. Can be fitted to any modern espagnolette rod or stand-alone centre lock (see page 104). Sold complete with a 7mm x 50mm spindle and can be locked with a grub screw hidden under the handle.



**20419R**  
POLISHED  
BRASS

**20415R**  
POLISHED  
CHROME



20415R - Polished Chrome

## TEARDROP ESPAGNOLETTES



## TEARDROP ESPAGNOLETTE

OVERALL SIZE: 150MM X 17MM  
FIXING PLATE: 55MM X 16MM  
FIXING PLATE THICKNESS: 5MM

A unique, traditionally designed Teardrop handle for all types of espagnolette windows. Manufactured from steel-zamak and has the functional advantages of a standard upvc handle with the aesthetics of a traditional design and a unique cranked handle. Comes with a fixed 40mm spindle which allows for cutting. Washered knuckle to allow smooth action and long life. Supplied complete with key and matching fixing screws.



**20460**  
BLACK

**20461**  
POLISHED  
BRASS

**20462**  
POLISHED  
CHROME

**20463**  
BRUSHED SATIN  
CHROME



20460 - Black Finish

20461 - Polished Brass Finish

20463 (Brushed Satin Chrome)

# MONKEYTAIL ESPAGNOLETTES



33288 (Monkeytail Espagnolette - Left Hand)

## MONKEYTAIL ESPAGNOLETTE - LH



OVERALL SIZE: 127MM X 38MM  
FIXING PLATE: 63MM X 23MM (20MM AVAILABLE)  
FIXING PLATE THICKNESS: 5MM

*Our Monkeytail Espagnolette handles have been hand-crafted and drawn down to a very fine point by skilled craftsmen and give an exquisite 'curl' detail. Match with the right size Monkeytail Stay to enhance any style of window. Can be fitted to any modern espagnolette rod or stand-alone centre lock (see page 104). Sold complete with a 7mm x 60mm spindle and can be locked with a grub screw hidden under the handle.*



**33225**  
BEESWAX



**33288**  
BLACK



**33620**  
PEWTER PATINA

## MONKEYTAIL ESPAGNOLETTE - RH

OVERALL SIZE: 127MM X 38MM  
FIXING PLATE: 63MM X 23MM (20MM AVAILABLE)  
FIXING PLATE THICKNESS: 5MM

*Our Monkeytail Espagnolette handles have been hand-crafted and drawn down to a very fine point by skilled craftsmen and give an exquisite 'curl' detail. Match with the right size Monkeytail Stay to enhance any style of window. Can be fitted to any modern espagnolette rod or stand-alone centre lock (see page 104). Sold complete with a 7mm x 60mm spindle and can be locked with a grub screw hidden under the handle.*



**33224**  
BEESWAX



**33287**  
BLACK



**33621**  
PEWTER PATINA



33287 - Black Finish



33243 - Black Finish

## SLIM MONKEYTAIL ESPAGNOLETTE - LH

OVERALL SIZE: 133MM X 45MM

FIXING PLATE: 64MM X 16MM

FIXING PLATE THICKNESS: 7MM

A narrow style window espag. handle which is ideal for the modern era and fits on any type of window, including uPVC and timber due to its slim fixing plate. Can be fitted to any modern espagnolette rod or stand-alone centre lock (see page 104). Sold complete with a 7mm thick spindle (spindle comes attached with 35mm length showing) and can be locked with a grub screw hidden under the handle.

33243  
BLACK33729  
ANTIQUE  
PEWTER

## SLIM MONKEYTAIL ESPAGNOLETTE - RH

OVERALL SIZE: 133MM X 45MM

FIXING PLATE: 64MM X 16MM

FIXING PLATE THICKNESS: 7MM

A narrow style window espag. handle which is ideal for the modern era and fits on any type of window, including uPVC and timber due to its slim fixing plate. Can be fitted to any modern espagnolette rod or stand-alone centre lock (see page 104). Sold complete with a 7mm thick spindle (spindle comes attached with 35mm length showing) and can be locked with a grub screw hidden under the handle.

33242  
BLACK33728  
ANTIQUE  
PEWTER

33728 - Antique Pewter Finish



20451 - Black Finish

## DELUXE MONKEYTAIL ESPAGNOLETTE - LH

OVERALL SIZE: 150MM X 45MM

FIXING PLATE: 55MM X 16MM

FIXING PLATE THICKNESS: 5MM

A unique, traditionally designed Monkeytail handle for all types of espagnolette windows. Manufactured from steel-zamak and has the functional advantages of a standard upvc handle with the aesthetics of a traditional design and a unique cranked handle. Comes with a fixed 40mm spindle which allows for cutting. Washered knuckle to allow smooth action and long life. Supplied complete with key and matching fixing screws.

20451  
BLACK

## DELUXE MONKEYTAIL ESPAGNOLETTE - RH

OVERALL SIZE: 150MM X 45MM

FIXING PLATE: 55MM X 16MM

FIXING PLATE THICKNESS: 5MM

A unique, traditionally designed Monkeytail handle for all types of espagnolette windows. Manufactured from steel-zamak and has the functional advantages of a standard upvc handle with the aesthetics of a traditional design and a unique cranked handle. Comes with a fixed 40mm spindle which allows for cutting. Washered knuckle to allow smooth action and long life. Supplied complete with key and matching fixing screws.

20450  
BLACK

20450 - Black Finish



33603 (Shepherd's Crook Espagnolette - Left Hand)



### SHEPHERD'S CROOK ESPAGNOLETTE - LH

OVERALL SIZE: 127MM X 38MM  
FIXING PLATE: 63MM X 20MM  
FIXING PLATE THICKNESS: 5MM

*These Shepherd's Crook Espagnolette handles are hand-crafted to a very fine point and curled over to give fantastic character and detail. It is robust, strong and will last for many years to come. Match up with our Shepherd's Crook Stays to create a completely unique look. Can be fitted to any modern espagnolette rod or stand-alone centre lock (see page 104). Sold complete with a 7mm x 60mm spindle and can be locked with a grub screw hidden under the handle.*

**33958** **33603**  
BLACK PEWTER PATINA

### SHEPHERD'S CROOK ESPAGNOLETTE - RH

OVERALL SIZE: 127MM X 38MM  
FIXING PLATE: 63MM X 20MM  
FIXING PLATE THICKNESS: 5MM

*These Shepherd's Crook Espagnolette handles are hand-crafted to a very fine point and curled over to give fantastic character and detail. It is robust, strong and will last for many years to come. Match up with our Shepherd's Crook Stays to create a completely unique look. Can be fitted to any modern espagnolette rod or stand-alone centre lock (see page 104). Sold complete with a 7mm x 60mm spindle and can be locked with a grub screw hidden under the handle.*

**33957** **33602**  
BLACK PEWTER PATINA



## CURTAIN POLE FURNITURE

LEAF CURTAIN FINIAL - *Page 98*

BALL CURTAIN FINIAL - *Page 98*

SHELL CURTAIN FINIAL - *Page 98*

MOUNTING BRACKET - *Page 99*

CURTAIN RINGS - *Page 99*

CURTAIN POLES - *Page 99*

JOINING BAR FOR CURTAIN POLES - *Page 99*

*From The Anvil - Curtain Pole Furniture*



83612

## TRADITIONAL RANGE CURTAIN FINIALS



83612 (Ball Finial), 83618 (Mounting Bracket), 83619 (Curtain Ring) & 83615 (Curtain Pole)

### LEAF CURTAIN FINIAL

OVERALL SIZE: 200MM X 105MM

A beautifully decorative curtain finial showing every individual hammer blow by our master craftsmen and forged into an ornate curl and shaped into a leaf as an end detail. Always allow enough space for length and height of finial. Sold in pairs.



**83613**  
BEESWAX

### BALL CURTAIN FINIAL

DIAMETER: 42MM  
PROJECTION: 45MM

A very simple, solid steel ball shaped finial used to finish off your curtain pole in a simple yet stylish way. Always allow enough space for length of finial. Sold in pairs.



**83612**  
BEESWAX

83612 - Beeswax Finish



### SHELL CURTAIN FINIAL

OVERALL SIZE: 95MM X 45MM

A very original design for a curtain finial, showing every individual hammer blow by our master craftsmen, hand forged and shaped into a leaf as an end detail. Always allow enough space for length of finial. Sold in pairs.



**83614**  
BEESWAX

83614 - Beeswax Finish



## TRADITIONAL RANGE CURTAIN POLES & ACCESSORIES

83613 (Leaf Finial), 83618 (Mounting Bracket), 83619 (Curtain Ring) & 83615 (Curtain Pole)

### MOUNTING BRACKET

FIXING PLATE: 93MM X 45MM  
PROJECTION: 105MM

*A decorative mounting bracket specifically designed to be used with our curtain poles. The fixing plate shows every individual hammer blow by our master craftsmen and the strong, sturdy hook can carry any of the curtain poles in our range and has a stylish curled end detail. Sold in pairs.*



**83618**  
BEESWAX



83618 - Beeswax Finish

### CURTAIN RING

DIAMETER: 51MM

*A simple curtain ring to match our beeswax range of curtain products. Sold as singles and we suggest using four rings per 300mm.*



**83619**  
BEESWAX



83619 - Beeswax Finish

### CURTAIN POLES

POLE DIAMETER: 22MM  
OVERALL SIZE: 1000MM (83615)  
OVERALL SIZE: 1500MM (83616)  
OVERALL SIZE: 2000MM (83617)

*Beeswaxed curtain poles in various lengths. As a rough guide allow a minimum of 300mm extra on the size of your window to allow the curtains to be drawn back. Designed to fit to your wall with our hand forged mounting brackets. Sold as singles.*

1M

1.5M

2M

**83615**  
BEESWAX

**83616**  
BEESWAX

**83617**  
BEESWAX

### JOINING BAR

SIZE: 100MM X 16MM

*A simple bar for joining two lengths of curtain poles together.*



**83620**  
ALUMINIUM



## LOCKS, LATCHES & ACCESSORIES

STANDARD LATCHES - *Page 101*

STANDARD SASH LOCKS - *Page 101*

STANDARD BATHROOM MORTICE LOCKS - *Page 101*

HEAVY DUTY LATCHES - *Page 102*

HEAVY DUTY SASH LOCKS - *Page 102*

HEAVY DUTY BATHROOM MORTICE LOCKS - *Page 102*

EURO SASH LOCKS - *Page 102*

EURO CYLINDERS & EURO THUMBTURNS - *Page 102*

EURO DIN SASH CASE - *Page 103*

TUBULAR DEADBOLT - *Page 103*

5 LEVER DEADLOCK BS - *Page 103*

3 POINT DOOR LOCKS - *Page 103*

WINDOW LOCKS & KEEP PLATE - *Page 104*

SPRING UNIT CASSETTES - *Page 104*

TAYLORS SPINDLES - *Page 104*

*From The Anvil - Door & Window Furniture*



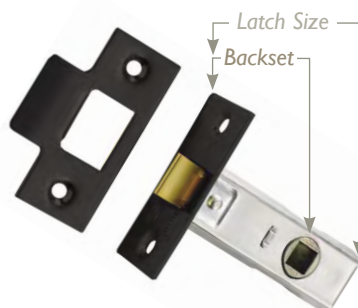
## 2.5" TUBULAR MORTICE LATCH

LATCH SIZE: 64MM

BACKSET: 44MM

A standard tubular mortice latch for use with any of our 'sprung' lever latch handles. As the handles are sprung there is no need to use a heavy duty latch.

Nickel Plated and Black finish plates available.



**18321N**  
NICKEL PLATED

**18321BL**  
BLACK

## 2.5" 5 LEVER SASH LOCK BRITISH STANDARD

LOCK SIZE: 64MM

BACKSET: 44MM

A standard 5 lever sash lock for use with any of our 'sprung' lever lock handles. As the handles are sprung there is no need to use a heavy duty lock.

PVD Brass, Satin Stainless Steel and Black finish plates available.



**18237**  
PVD BRASS

**18238**  
SATIN STAINLESS  
STEEL

**18234**  
BLACK

**18237R**  
PVD BRASS

**18239R**  
SATIN STAINLESS  
STEEL



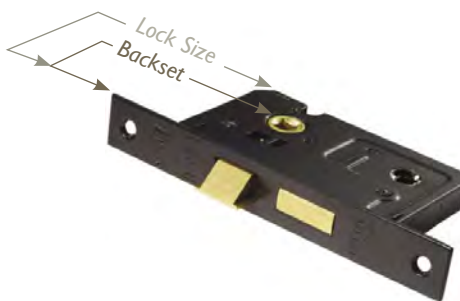
## 2.5" BATHROOM MORTICE LOCK

LOCK SIZE: 64MM

BACKSET: 44MM

For use with any of our bathroom lever handles that come with a fixed thumbturn. As the handles are sprung there is no need to use a heavy duty latch.

Nickel Plated and Black finish plates available.



**18343N**  
NICKEL PLATED

**18343BL**  
BLACK

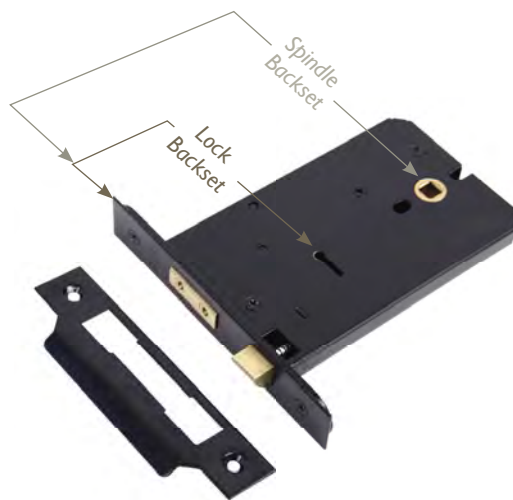
## ANVIL 5 LEVER HORIZONTAL SASH LOCK

LOCK SIZE: 151MM

LOCK BACKSET: 57MM

SPINDLE BACKSET: 127MM

A standard 5 lever horizontal sash lock for use with our Monkeytail on Diamond Rosette handle (see page 55 for illustration) and our Mortice Knobs. Supplied with Black Finish forends.



**33007**  
BLACK

## HEAVY DUTY LATCH

For use with any of our knob sets or lever latch handles.

When purchasing knobs we recommend using the 4" or 5" latch (depending on the width of your stile) to avoid knocking your knuckles on the door frame.

When purchasing lever handles we recommend using the 2.5" or 3" (depending on the width of your stile).

2 1/2"

3"

4"

5"

REBATE KIT

18299/2.5

BACKSET: 44MM

18299/3

BACKSET: 56MM

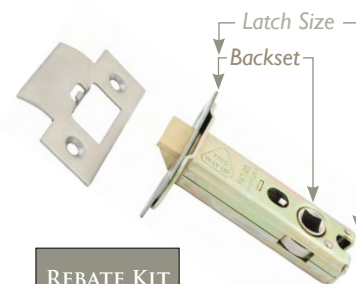
18299/4

BACKSET: 81MM

18299/5

BACKSET: 106MM

18367



## 5 LEVER HEAVY DUTY SASH LOCK BRITISH STANDARD - SSS

For use with any of our knob sets or lever lock handles.

Choose the 2.5" or 3" lock depending on the width of your stile.

2 1/2"

3"

REBATE KIT

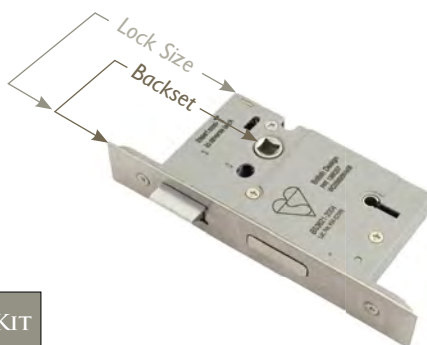
18238/H

BACKSET: 44MM

18239/H

BACKSET: 56MM

18239/R



## HEAVY DUTY BATHROOM MORTICE LOCK - SSS

For use with any of our bathroom lever handles that come with a fixed thumbturn.

Conforms to British Standards. Choose the 2.5" or 3" lock depending on the width of your stile.

2 1/2"

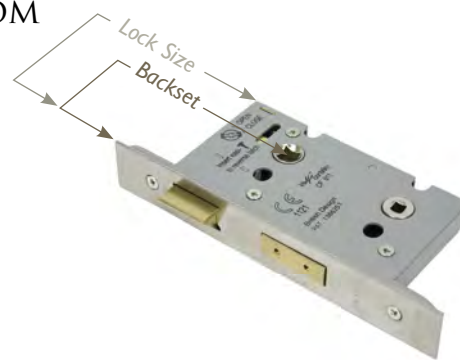
3"

18343NHD

BACKSET: 44MM

18338NHD

BACKSET: 56MM



## EURO SASH LOCK - SSS

For use with any of our lever euro lock handles and must be used in conjunction with a euro cylinder.

Choose the 2.5" or 3" lock depending on the width of your stile.

2 1/2"

3"

REBATE KIT

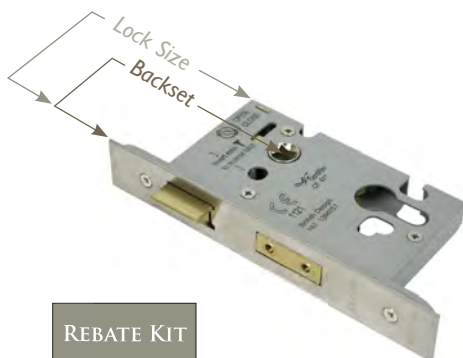
18353

BACKSET: 44MM

18355

BACKSET: 56MM

18357



## EURO CYLINDER

SIZE: 35MM X 35MM

To be used in conjunction with our Euro Sash Lock and any of the Euro Lever Handles in the Anvil range.

20551

SATIN CHROME



## EURO THUMBTURN

SIZE: 35MM X 35MM

Euro profile thumbturn cylinder offers key access from the outside and a thumbturn from the inside.

20554

SATIN CHROME



## EURO DIN SASH CASE - SSS

For use with Diamond Monkeytail and Diamond Euro Escutcheon and must be used in conjunction with a euro cylinder.

2<sup>3</sup>/<sub>8</sub>"

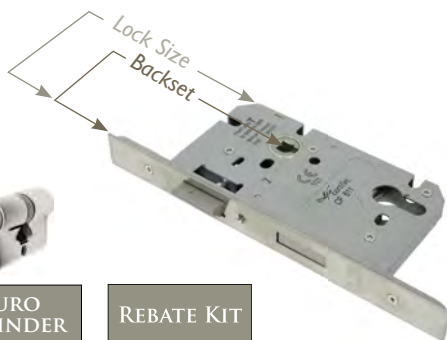
EURO  
CYLINDER

REBATE KIT

**18355/A**  
BACKSET: 60MM  
CENTRES: 72MM

**20551**  
SIZE: 35MM X 35MM

**18355/R**



## HEAVY DUTY TUBULAR DEADBOLT - SSS

For use with our Diamond Bathroom Thumbturn (see page 36). This latch takes a 5mm spindle, which is supplied with the thumbturn.

2<sup>1</sup>/<sub>2</sub>"

3"

4"

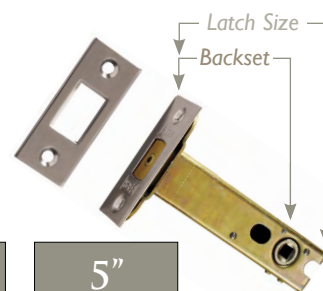
5"

**18364**  
BACKSET: 44MM

**18361**  
BACKSET: 56MM

**18362**  
BACKSET: 81MM

**18363**  
BACKSET: 106MM



## 5 LEVER DEADLOCK BRITISH STANDARD - SSS

Used in addition with our Rim Lock & Cover (33180) to turn into external door lock which complies with British Standards and insurance ratings.

20mm solid steel anti-thrust, anti-saw, anti-drill bolt throw. Supplied with 3 keys as standard with box striking plate and fixings.

2<sup>1</sup>/<sub>2</sub>"

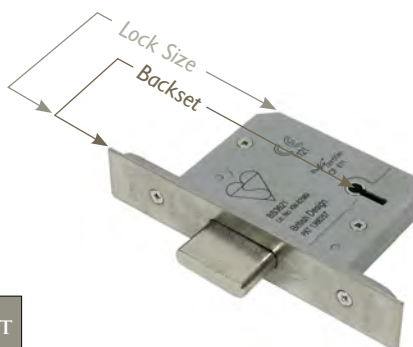
3"

REBATE KIT

**18246/H**  
BACKSET: 44MM

**18243**  
BACKSET: 56MM

**18246/R**



## 3 POINT DOOR LOCK - SS

For use with our espagnolette locking handle sets. Stainless steel three point espagnolette lock. Excellent quality and a very secure system. Sold in singles. Use 20787 if choosing our Tudor Espag Set to avoid catching the handle on your door frame.

Order keep sets separately:

20711 - 44mm door

20709 - 57mm door

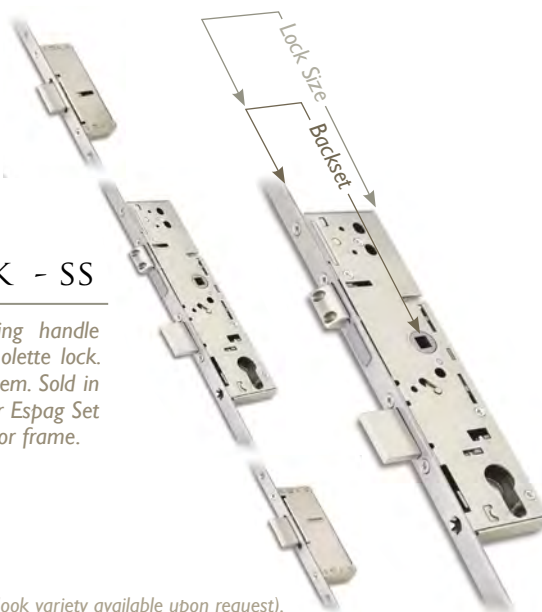
2"

2<sup>1</sup>/<sub>2</sub>"

(Hook variety available upon request).

**20786**  
BACKSET: 35MM

**20787**  
BACKSET: 45MM



20711 - Keep - 44mm Door

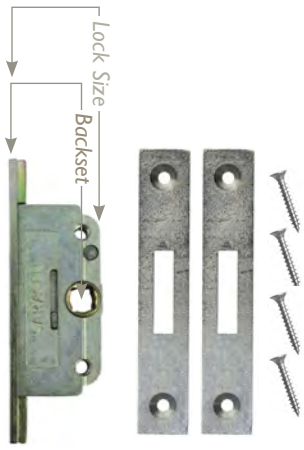


20709 - Keep - 57mm Door

### WINDOW LOCK - SS

LOCK SIZE: 30MM  
KEEP PLATE SIZE: 90MM X 16MM  
FACEPLATE THICKNESS: 2MM

A small, neat window lock with 7mm spindle drive and stainless steel forends. When morticed into edge of window casement it will take any espag. window fastener. The total answer when window has a draft gasket.



**20779**  
BACKSET: 23MM  
(25MM WITH  
FACEPLATE)

### VENTABLE KEEP PLATE - SS

SIZE: 51MM X 24MM

This keep allows a window to be vented and has the added feature of being able to be locked in normal or vented position.



**20777**

### NARROW SPRING UNIT CASSETTE

SIZE: 63MM X 25MM  
THICKNESS: 6MM

Will increase performance if your lock is too weak for unsprung handles. Cut into the face of the door so the cassette fits flush with the surface and sits behind your door handle. See our website for more detailed fitting instructions.



**33256/A**

### SPRING UNIT CASSETTE

SIZE: 51MM X 35MM  
THICKNESS: 13MM

This cassette is designed to increase the tension and performance of an old or weak lock. Cut into the face of the door so the cassette fits flush with the surface and sits behind your door handle. See our website for more detailed fitting instructions.



**33256**

### THREADED TAYLORS SPINDLE

BASE SIZE: 25MM  
SPINDLE: 25MM X 8MM

Can be used to fix threaded knobs to doors and drawers i.e. split set for double wardrobe doors.



**31298/A**

### TAYLORS SPINDLE

BASE SIZE: 25MM  
SPINDLE: 25MM X 8MM

Can be used to fix handles to doors i.e. split set for double wardrobe doors.



**31298**

## ELECTRICAL ACCESSORIES

SWITCHES - Page 105

SOCKETS - Page 105

TV OUTLETS - Page 105

SKY+ SOCKETS - Page 105

TELEPHONE SOCKETS - Page 105

SHAVER SOCKETS - Page 105

BLANK PLATES - Page 105

GUIDE TO FINISHES - Page 105

*From The Anvil - Electrical Furniture*



34229/2

We have brought together a number of decorative electrical accessories that we feel are the closest colour and finish match to our handmade ironmongery that is available. See our guide at the bottom of this page to choose what finish best suits your needs.

#### 10 AMP TWO WAY SWITCHES



Single Switch - BN - 34200  
Single Switch - SSS - 34200/1  
Single Switch - MB - 34200/2

Double Switch - BN - 34201  
Double Switch - SSS - 34201/1  
Double Switch - MB - 34201/2

Triple Switch - BN - 34202  
Triple Switch - SSS - 34202/1  
Triple Switch - MB - 34202/2

Quad Switch - BN - 34203  
Quad Switch - SSS - 34203/1  
Quad Switch - MB - 34203/2

#### 20 AMP SWITCHES



Intermediate Switch (20 Amp)  
BN - 34204  
SSS - 34204/1  
MB - 34204/2

Single 20 Amp DP Switch  
BN - 34205  
SSS - 34205/1  
MB - 34205/2

Single Switch & Neon  
BN - 34206  
SSS - 34206/1  
MB - 34206/2

#### 13 AMP DP SWITCHED SOCKETS



Single Switch Socket  
BN - 34223  
SSS - 34223/1  
MB - 34223/2

Double Switch Socket  
BN - 34224  
SSS - 34224/1  
MB - 34224/2

#### 13 AMP SWITCHED FUSES



Fused Switch & Neon - BN - 34209  
Fused Switch & Neon - SSS - 34209/1  
Fused Switch & Neon - MB - 34209/2

Fused Switch - BN - 34208  
Fused Switch - SSS - 34208/1  
Fused Switch - MB - 34208/2

Switched Fuse & Flex - BN - 34210  
Switched Fuse & Flex - SSS - 34210/1  
Switched Fuse & Flex - MB - 34210/2

Unswitched Fuse - BN - 34207  
Unswitched Fuse - SSS - 34207/1  
Unswitched Fuse - MB - 34207/2

#### 45 AMP COOKER SWITCHES



45 Amp Single Plate Cooker Switch

BN - 34212  
SSS - 34212/1  
MB - 34212/2

45 Amp Double Plate Cooker Switch

BN - 34211  
SSS - 34211/1  
MB - 34211/2

#### 45 AMP SWITCH & SOCKET



45 Amp DP Switch & Socket

BN - 34226  
SSS - 34226/1  
MB - 34226/2

#### FAN ISOLATOR SWITCH



Fan Isolator Switch

BN - 34213  
SSS - 34213/1  
MB - 34213/2

#### DIMMER SWITCHES



Single - 400w - BN - 34215  
Single - 400w - SSS - 34215/1  
Single - 400w - MB - 34215/2  
Single - 800w - BN - 34216  
Single - 800w - SSS - 34216/1  
Single - 800w - MB - 34216/2

Double - 400w - BN - 34218  
Double - 400w - SSS - 34218/1  
Double - 400w - MB - 34218/2

Triple - 400w - BN - 34220  
Triple - 400w - SSS - 34220/1  
Triple - 400w - MB - 34220/2

Quad - 400w - BN - 34222  
Quad - 400w - SSS - 34222/1  
Quad - 400w - MB - 34222/2

#### TV OUTLET



Single TV Socket  
BN - 34229  
SSS - 34229/1  
MB - 34229/2

Double TV Socket  
BN - 34230  
SSS - 34230/1  
MB - 34230/2



All the electrical items on this page are supplied with black interiors (switches/rockers) only.

#### SKY+ SOCKET



BN - 34231  
SSS - 34231/1  
MB - 34231/2

#### TELEPHONE SOCKETS



Telephone Slave Socket

BN - 34227  
SSS - 34227/1  
MB - 34227/2

Telephone Master Socket

BN - 34228  
SSS - 34228/1  
MB - 34228/2

#### SHAVER SOCKETS



Dual Volt Shaver Socket

BN - 34232  
SSS - 34232/1  
MB - 34232/2

#### BLANK PLATES



Single Blank Plate

BN - 34233  
SSS - 34233/1  
MB - 34233/2

Double Blank Plate

BN - 34234  
SSS - 34234/1  
MB - 34234/2

#### GUIDE TO FINISHES



BLACK NICKEL (BN)

Best suited for Beeswax or Traditional Black Finishes



SATIN STAINLESS STEEL (SSS)

Best suited for Pewter Finish



MATT BLACK (MB)

Best suited for Black Finish

## NEW PRODUCTS

LATCHES - *Page 108*

LEVER HANDLES - *Page 109*

DOOR KNOCKERS & CENTRE DOOR KNOBS - *Page 110*

RIM & MORTICE KNOBS - *Page 111*

ESCUTCHEONS, CYLINDER PULLS & RIM LOCKS - *Page 112*

FINGER PLATES - *Page 113*

TEARDROP & DELUXE MONKEYTAIL ESPAGS. - *Page 114*

*From The Anvil - Additions*



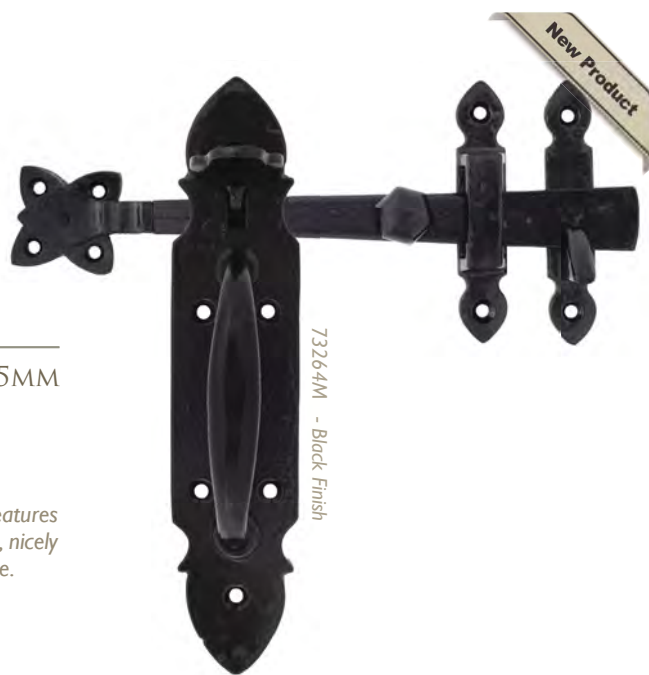
## SUFFOLK LATCH

BACKPLATE SIZE: 220MM X 45MM  
HANDLE LENGTH: 100MM  
PROJECTION: 52MM  
PLATE THICKNESS: 4MM

*A beautiful latch with lots of stylish features including a long bar with octagonal knob, nicely decorated keeps and a comfortable handle.*



**73264M**  
BLACK



73264M - Black Finish

## THUMBLATCH SET WITH CHAIN

OVERALL HEIGHT: 200MM  
HANDLE LENGTH: 110MM  
LATCH LENGTH: 150MM

*Simple cast Suffolk Latch which can be used on doors up to a thickness of 44mm. Includes a chain on the inside for privacy. Supplied with all fixing screws.*



**33321**  
BLACK



33321 - Black Finish



73205M - Black Finish

## MF LEVER LOCK

BACKPLATE SIZE: 150 X 37MM  
HANDLE LENGTH: 93MM  
CENTRES: 57MM

*These attractive, malleable iron handles come sprung. This handle has clean lines with its simple backplate and returned handle. Supplied with all fixing screws.*



**73205M**  
BLACK



73217M - Black Finish

## LEVER LOCK

BACKPLATE SIZE: 150 X 40MM  
HANDLE LENGTH: 95MM  
CENTRES: 57MM

*This traditional, malleable iron handle comes sprung. This handle has a square backplate and a textured finish. Supplied with all fixing screws.*



**73217M**  
BLACK



33765 - Pewter Patina Finish

GOTHIC CURVED  
ESPAG. LOCK SET

BACKPLATE SIZE: 248MM X 43MM  
BACKPLATE THICKNESS: 5MM  
HANDLE LENGTH: 115MM  
CENTRES: 92MM

*The euro version of the Gothic handle is designed to be used in conjunction with a euro sash lock and euro cylinder (see page 102) and allows your door to be locked from inside or outside. Ideal for patio doors or replacement of existing euro handles.*



**33765**  
PEWTER PATINA



## LOOP DOOR KNOCKER

OVERALL: 180 x 63MM  
SCREWS CENTRES: 73MM  
STUD: DIA Ø40MM

*Solid brass Victorian style Knocker, designed for narrow centre door panels in three finishes. It has a large striking plate and fixed with two hexagon brass nuts.*



**33610M**  
POLISHED  
BRASS



**73379M**  
BLACK



**33610**  
ANTIQUE  
PEWTER

## CENTRE DOOR KNOB

ROSE SIZE: Ø 85MM  
PROJECTION: 80MM

*The centre door knob is fitted to the external face of the door. As well as being aesthetically pleasing it is also used to assist in pulling the door closed.*



**83506**  
BLACK



**83505**  
ANTIQUE  
PEWTER



Alternative Views



83506  
Black Finish



83505  
Antique  
Pewter Finish

## OVAL MORTICE/RIM KNOB SET

**KNOB SIZE:** 60MM X 40MM  
**PROJECTION:** 65MM

These attractive and heavy solid oval knobs are designed for use with mortice and rim locks. For use on doors with a max. thickness of 44mm but an extra long spindle is available for thicker doors (see 33230 XLS).

For best results the centre of the knob should be a minimum of 3" from the edge of the door so as not to catch your knuckles against door jambs etc. Heavy Duty latches 4" or 5" are recommended for maximum efficiency. Supplied with matching fixing screws.



**83627**  
 POLISHED  
 BRASS



**83629**  
 POLISHED  
 NICKEL



83627 - Polished Brass Finish

## BALL MORTICE KNOB SET

**KNOB SIZE:** Ø47MM  
**PROJECTION:** 75MM  
**ROSE SIZE:** Ø75MM  
**SPINDLE SIZE:** 8MM

A solid cast Ball Mortice Knob which is unsprung and surfaced fixed. The roses are attached and therefore not suitable for use with Rim Locks.

For best results the centre of the knob should be a minimum of 3" from the edge of the door. Heavy Duty latches 4" or 5" are recommended for maximum efficiency. Supplied with necessary fixing screws.



83632 - Polished Nickel Finish



**83630**  
 POLISHED  
 BRASS



**83632**  
 POLISHED  
 NICKEL

OVAL EURO ESCUTCHEON

OVERALL SIZE: 51MM X 29MM  
THICKNESS: 2.5MM



33830  
BLACK



33706  
PEWTER PATINA



33830  
Black Finish



33706  
Pewter Patina Finish

RIM CYLINDER PULL

OVERALL SIZE: 85MM X 52MM  
BACKPLATE SIZE: 52MM X 52MM  
PROJECTION: 20MM  
PLATE THICKNESS: 3MM

Used on front doors to match with black iron door fittings.  
This cylinder pull should be fitted behind the cylinder of a  
night latch to assist in pulling the door closed.



73394/1  
BLACK



DAVENPORT RIM LOCK

RIM LOCK SIZE: 168MM X 122MM  
SPINDLE CENTRE: 125MM  
KEY CENTRE: 47MM  
KEEP: 116MM X 22MM

A traditional style rim lock which has a very heavy, solid feel to it. Cast  
from solid iron with quality brass movements inside to produce a weighty,  
victorian style lock. Comes with two solid brass keys. Allows a maximum  
door thickness of 45mm.

The lock can be fitted on the left or right hand side of the door. Suitable  
knobs would be all wooden and beehive pattern or 83564 Brass.



83578  
IRON



New Product



33479 - Beeswax Finish



33466 - Black Finish

## PULL HANDLE FINGERPLATE

BACKPLATE SIZE: 318MM X 65MM

HANDLE LENGTH: 200MM

PROJECTION: 56MM

PLATE THICKNESS: 3MM

*This heavy duty fingerplate has a large, comfortable handle which is offset and is ideal for single or double doors.*

*Screw fixing and comes supplied with all necessary fixings*



**33479**  
BEESWAX



**33466**  
BLACK

New Product



33478 - Beeswax Finish



33467 - Black Finish

## PLAIN FINGERPLATE

BACKPLATE SIZE: 318MM X 65MM

*This heavy finger plate is fitted to protect the face of a door from wear and tear. It has a strong quality and looks good on oak or painted doors. Ideal for heavy use areas.*



**33478**  
BEESWAX



**33467**  
BLACK

## TEARDROP ESPAGNOLETTE

OVERALL SIZE: 150MM X 17MM  
FIXING PLATE: 55MM X 16MM  
FIXING PLATE THICKNESS: 5MM

A unique, traditionally designed Teardrop handle for all types of espagnolette windows. Manufactured from steel-zamak and has the functional advantages of a standard upvc handle with the aesthetics of a traditional design and a unique cranked handle. Comes with a fixed 40mm spindle which allows for cutting. Washered knuckle to allow smooth action and long life. Supplied complete with key and matching fixing screws.



**20460**  
BLACK



**20461**  
POLISHED  
BRASS



**20462**  
POLISHED  
CHROME



**20463**  
BRUSHED SATIN  
CHROME



## DELUXE MONKEYTAIL ESPAGNOLETTE - LH

OVERALL SIZE: 150MM X 45MM  
FIXING PLATE: 55MM X 16MM  
FIXING PLATE THICKNESS: 5MM

A unique, traditionally designed Monkeytail handle for all types of espagnolette windows. Manufactured from steel-zamak and has the functional advantages of a standard upvc handle with the aesthetics of a traditional design and a unique cranked handle. Comes with a fixed 40mm spindle which allows for cutting. Washered knuckle to allow smooth action and long life. Supplied complete with key and matching fixing screws.



**20451**  
BLACK

## DELUXE MONKEYTAIL ESPAGNOLETTE - RH

OVERALL SIZE: 150MM X 45MM  
FIXING PLATE: 55MM X 16MM  
FIXING PLATE THICKNESS: 5MM

A unique, traditionally designed Monkeytail handle for all types of espagnolette windows. Manufactured from steel-zamak and has the functional advantages of a standard upvc handle with the aesthetics of a traditional design and a unique cranked handle. Comes with a fixed 40mm spindle which allows for cutting. Washered knuckle to allow smooth action and long life. Supplied complete with key and matching fixing screws.



**20450**  
BLACK



# FROM THE ANVIL GENERAL MAINTENANCE, CARE GUIDE & SPARES

## General Maintenance

As with any ironmongery on today's market there are general maintenance tips that can be used to keep your products at their best.

**Warning: Please make sure all plaster is fully dry before fitting any of our ironmongery. The moisture in a newly plastered room is phenomenal. None of our products are suitable for coastal areas.**

With all our products, when used externally, any moving parts will require the occasional oiling and we recommend that the ironmongery is wiped with a lightly oiled cloth from time to time. This will remove harmful deposits and restore it to its original condition. Do not use any form of chemical. Always use the products we recommend for external use, otherwise you may encounter a degradation of the lacquer/wax finish. Our internal finishes aren't recommended for external use but can still be used, if desired, in an enclosed or protected area, like a porch but you may need to reapply an extra coating of wax (beeswax finish only) and you may encounter some rusting issues if not totally protected.



33002  
(Maintenance Wax)

When choosing the Beeswax finish, sometimes because of temperature changes, your product might have a slight white bloom when opening the packaging. We recommend you buff it with a soft cloth, this will restore the finish. However, mild steel or malleable iron, which are the two materials we forge, when fitted in damp bathrooms or wet properties, have the potential to exhibit surface rust. If surface rust does occur rub with wire wool and apply maintenance wax with a rag or brush. The maintenance wax will restore the finish and afford protection.

Some of our finishes (Polished & Antique Brass) will naturally tarnish and produce a darker, aged patina over time and would therefore need to be treated with a brass polish to maintain and protect the item, if desired.

Our wooden finishes can also be polished or waxed to maintain the vibrance of the wood and to give protection from general usage.

All of our finishes will last for many years to come but, as with anything, the more you look after something the better it looks!

## THREADED SPINDLES

120mm Standard Threaded Spindle	-	Spare	-	33230S
140mm Threaded Spindle	-	Spare	-	33230XLS
190mm Threaded Spindle	-	Spare	-	33230XXL

## MALE & FEMALE SCREWS

5mm Male & Female Screws (2)	-	Pewter	-	33767
5mm Male & Female Screws (2)	-	Black	-	33768

## COUNTERSUNK SCREWS

4 x 1/2" Countersunk Screws (25)	-	Beeswax	-	33400
4 x 1/2" Countersunk Screws (25)	-	Black	-	33402
4 x 1/2" Countersunk Screws (25)	-	Bronze	-	33915
6 x 1/2" Countersunk Screws (25)	-	Bronze	-	33920
6 x 3/4" Countersunk Screws (25)	-	Beeswax	-	33406
6 x 3/4" Countersunk Screws (25)	-	Black	-	33408
6 x 3/4" Countersunk Screws (25)	-	Pewter	-	33425
6 x 3/4" Countersunk Screws (25)	-	Bronze	-	33919
8 x 3/4" Countersunk Screws (25)	-	Beeswax	-	33411
8 x 3/4" Countersunk Screws (25)	-	Black	-	33413
8 x 3/4" Countersunk Screws (25)	-	Pewter	-	33430
8 x 3/4" Countersunk Screws (25)	-	Bronze	-	33937
8 x 1" Countersunk Screws (25)	-	Black	-	33417
8 x 1" Countersunk Screws (25)	-	Pewter	-	33434

## ROUND HEAD SCREWS

4 x 1/2" Round Head Screws (25)	-	Beeswax	-	33401
4 x 1/2" Round Head Screws (25)	-	Black	-	33403
4 x 1/2" Round Head Screws (25)	-	Pewter	-	33421
4 x 1/2" Round Head Screws (25)	-	Bronze	-	33913
6 x 1/2" Round Head Screws (25)	-	Beeswax	-	33404
6 x 1/2" Round Head Screws (25)	-	Pewter	-	33423
6 x 1/2" Round Head Screws (25)	-	Bronze	-	33916
6 x 3/4" Round Head Screws (25)	-	Beeswax	-	33407
6 x 3/4" Round Head Screws (25)	-	Black	-	33409
6 x 3/4" Round Head Screws (25)	-	Pewter	-	33426
6 x 3/4" Round Head Screws (25)	-	Bronze	-	33917
6 x 1" Round Head Screws (25)	-	Black	-	33410
6 x 1" Round Head Screws (25)	-	Pewter	-	33427
6 x 1" Round Head Screws (25)	-	Bronze	-	33918
8 x 3/4" Round Head Screws (25)	-	Beeswax	-	33412
8 x 3/4" Round Head Screws (25)	-	Black	-	33414
8 x 3/4" Round Head Screws (25)	-	Pewter	-	33431
8 x 3/4" Round Head Screws (25)	-	Bronze	-	33939
8 x 1" Round Head Screws (25)	-	Beeswax	-	33415
8 x 1" Round Head Screws (25)	-	Black	-	33418
8 x 1" Round Head Screws (25)	-	Pewter	-	33433
8 x 1" Round Head Screws (25)	-	Bronze	-	33938
10 x 1 1/2" Round Head Screws (25)	-	Beeswax	-	33419
10 x 1 1/2" Round Head Screws (25)	-	Black	-	33420

## SUPPLY POLICY

It is our policy to distribute our products through a strong network of trade outlets namely architectural ironmongers and builders' merchants throughout the UK.


Please e-mail: **info@fromtheanvil.co.uk** for a recommended outlet in your area.

## CONDITIONS OF SALE

1. Slight variations in sizes and colour may occur due to the handcrafted nature of the products. This is why people buy our products because no two items are the same.
2. All items shown within this catalogue are offered subject to availability.
3. Any prices or quotations obtained verbally will not be deemed valid, nor will any responsibility or intent be accepted.
4. Deliveries direct to site will not be undertaken without full postcode, contact name and telephone number. Please note that 'From the Anvil' does not accept any liability for site deliveries and they are sent at the customers' own risk.
5. Whilst 'From the Anvil' endeavours to offer outstanding service, our prompt progression of orders means that they maybe unable to include additions with the main consignment once it has been processed and packed. Hence these may be considered as a separate order and be subject to additional carriage charges.
6. All requests for returns must be made in writing. The customer will be charged a restocking charge and the goods are to be returned at the customers' own expense. The goods must be in a re-saleable condition and must be authorised by us. If packing is not complete no credit will be given. The customer must provide us with the original invoice, despatch note or other proof of purchase. All goods will be thoroughly inspected before credit is given.
7. Claims for shortages, damaged goods or incorrect supply must be notified within 3 days of receipt. No responsibility will be accepted after this interval as the goods will be deemed examined and satisfactory.
8. To the best of our knowledge, all definitions, descriptions and photographs contained in this catalogue are correct at the time of going to press. We cannot, however, be held legally liable for any inaccuracies of definition or description.

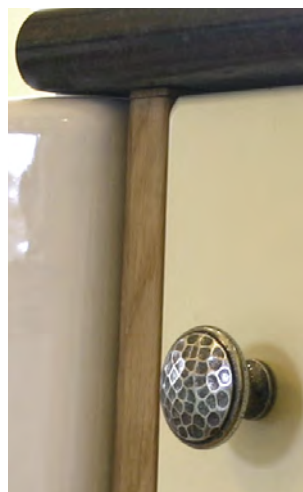
*Please note that any information within this catalogue is to be used as a recommendation of use only, and 'From the Anvil' does not accept any liability. 'From the Anvil' Customers are encouraged to seek other technical advice. Due to the printing process we advise that you do not use the colour images in this catalogue as an indication for colour replication.*

9. In the event of goods proving faulty by way of manufacture, 'From the Anvil' will replace the same but in doing so, no liability, consequential or otherwise, is accepted.
10. 'From the Anvil' warrants that the goods are of merchantable quality (as defined in the Sale of Goods Act 1979) but does not warrant that the goods are fit for any specific purpose and accepts no liability for any loss or damage suffered by the customer as a result of any defect in the design, materials or workmanship of the goods.
11. The customer shall indemnify 'From the Anvil' in respect of any loss, injury, expense or claim of whatsoever nature and howsoever arising out of the Contract or the goods, or their storage, installation, use, operation or maintenance save to the extent that the same is caused by negligence of 'From the Anvil', its servants or agents, including 'From the Anvil's subcontractors.

**N.B.**  is a registered Trademark and may, in no way be reproduced, replicated or copied without prior consent or agreement from the management.



Wherever possible our products have been stamped with an Anvil Authentication Mark to show genuine 'From The Anvil' products.



# INDEX

## A

- Angled Keep  
Page 68
- Antique
  - Brass  
Pages 5, 107
  - Pewter  
Pages 5, 107
- Arrow Head T Hinges  
Pages 9-11
- Art Deco Letterplate  
Page 61
- Avon Lever Handles  
Pages 32-33

## B

- Ball Bearing Butt Hinge  
Page 12
- Ball Finial  
Page 98
- Band & Spike Hinge  
Page 10
- Bar, Joining  
Page 99
- Barn Door Hinge  
Pages 9-10
- Bathroom
  - Dead Bolt  
Page 103
  - Lever Handle  
Pages 26-38
  - Mortice Lock  
Pages 101-102
  - Thumbturn  
Page 56
- Bean
  - D Handle  
Page 41
  - Thumbatch  
Pages 17-18
  - Screw-on-staple  
Page 20
- Beaten Knob  
Page 76
- Beehive Escutcheon  
Page 56
- Beeswax Finish  
Pages 4, 107
- Black Finish  
Pages 4, 107
- Bolts
  - Cranked  
Pages 66-67
  - Fishtail  
Page 66
  - Knob  
Pages 67, 69
  - Flush  
Page 69
  - French  
Page 68
  - Slide  
Page 69
  - Straight  
Pages 66-67
- Box Lock  
Page 51

## Bracket, Mounting

- Page 99
- Brass Finish
  - Antique  
Pages 5, 107
  - Polished  
Pages 5, 107
- Bronze Finish  
Pages 4, 107
- Bun Mortice/Rim Knob Set  
Page 48
- Butt Hinge  
Page 12
- Butterfly Hinge  
Page 14

## C

- Cabinet & Drawer Furniture  
Pages 39-45, 75-80
- Cabinet Knobs  
Pages 76-79
- Cabinet Latch  
Page 80
- Cabin Hooks  
Page 74
- Care Guide  
Pages 4-5, 107
- Cassette, Spring Unit  
Page 104
- Chrome, Polished  
Pages 5, 107
- Coat Hook  
Page 72
- Conditions of Sale  
Page 108
- Contents  
Page 3
- Cottage Latch  
Page 21
- Cottage Lever Handles  
Page 29
- Cover, Letterplate  
Page 60
- Cranked
  - Bolt  
Pages 66-67
  - Hinge  
Page 9
  - Stay Pin  
Page 87-90
- Cromwell Lever Handles  
Page 38
- Cupboard
  - Beaten Knob  
Page 76
  - Hammered Knob  
Page 76
  - Octagonal Knob  
Page 77
  - Oval Knob  
Page 77
  - Ribbed Knob  
Page 77
  - Turn  
Page 80
  - Twist Knob  
Page 77

## Cup Hooks

- Page 73
- Curly Lever Handles  
Page 27
- Curtain Pole Furniture
  - Brackets  
Page 99
  - Finials  
Page 98
  - Joining Bar  
Page 99
  - Poles  
Page 99
  - Rings  
Page 99
- Curved Gothic Lever Handles  
Page 36
- Cylinders
  - Euro  
Page 102
  - Euro Thumbturn  
Page 102

## D

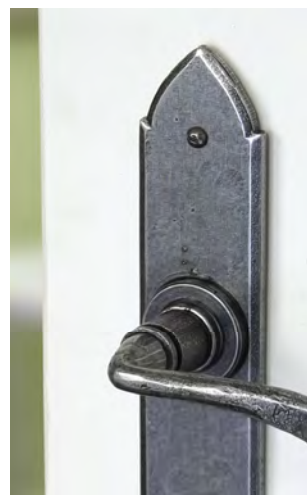
- D Handles
  - Bean  
Page 41
  - Gothic  
Page 40
  - Hammered  
Page 42
  - Ribbed  
Page 44
  - Shell  
Page 43
- Dead
  - Bolt  
Page 103
  - Lock  
Page 103
- Diamond
  - Escutcheon  
Page 55
  - Rosette  
Page 28
  - Thumbturn  
Page 56
- Door
  - Bolts  
Pages 65-69
  - Furniture  
Pages 6-74
  - Grill  
Page 64
  - Knocker  
Page 58
  - Knobs  
Pages 46-49
  - Locks  
Pages 100-104
  - Studs  
Page 64
- Drawer Pulls  
Pages 40-45
- Drop Handles  
Page 45

## E

- Ebony Finish  
Pages 5, 107
- Electrical Accessories  
Pages 105-106
- Escutcheons
  - Beehive  
Page 56
  - Diamond  
Page 55
  - Euro  
Page 55
  - Oval  
Page 55
  - Oval & Cover  
Page 55
  - Plain  
Page 56
- Espagnolette
  - Door  
Pages 28, 32, 33, 35, 37
  - Window  
Pages 91-96, 104
- Euro
  - Escutcheon  
Page 55
  - Cylinder  
Page 102
  - DIN Sash Case  
Page 103
  - Lever Handle  
Pages 28, 33, 35
  - Sash Lock  
Page 102

## F

- Fasteners
  - Monkeytail  
Pages 83-84
  - Peardrop  
Page 82
  - Shepherd's Crook  
Page 85
- Finials, Curtain  
Page 98
- Finishes Guide  
Pages 4-5, 107
- Fleur De Lys Hook  
Page 71
- Flush Bolt  
Page 69
- Frame Keep Pin  
Page 20
- French Bolts  
Page 68
- Fishtail Bolts  
Page 66
- Flower Mortice Knob Set  
Page 49
- Furniture
  - Cabinet, Cupboard & Drawer  
Pages 75-80
  - Curtain Pole  
Pages 97-99
  - Door  
Pages 6-74



- **Electrical**  
Pages 105-106
- **Window**  
Pages 81-96

## G

### General Maintenance

Page 107

### Gothic

#### - Curved

Page 36

#### - D Handle

Page 40

#### - Hook

Page 71

#### - Lever Handle

Page 34-35

#### - Screw-on-staple

Page 20

#### - Thumb latch

Page 19

#### Grill, Raised

Page 64

#### Guides

#### - Finishes

Page 4-5

#### - Maintenance & Care

Page 107

## H

### H Hinge

Page 13

### Half Butterfly Hinge

Page 14

### Hammered

#### - Knobs

Page 76

#### - Pull Handles

Page 42

### Handle

#### - Cabinet

Page 45

#### - D

Pages 40-44

#### - Drop

Page 45

#### - Lever

Pages 26-38

#### - Pull

Pages 40-45

#### - Ring Turn

Page 25

### Handmade Nail

Page 63

### Hat & Coat Hook

Page 72

### Heavy Duty Locks & Latches

Pages 102-103

### Hinge Fronts

Page 12

### Hinges

#### - Arrow Head Hinge

Pages 9-11

#### - Ball Bearing Butt Hinge

Page 12

#### - Band & Spike Hinge

Page 10

#### - Barn Door Hinges

Pages 9-10

#### - Butterfly Hinge

Page 14

#### - Butt Hinge

Page 12

#### - Fronts

Page 12

#### - H Hinge

Page 13

#### - Half Butterfly Hinge

Page 14

#### - HL Hinge

Page 13

#### - Hook & Band Hinge

Page 9

#### - Hook & Band Hinge (Cranked)

Page 9

#### - Ornate Hinge

Page 15

#### - Penny End Hinge

Pages 7-8

#### - Shutter Hinge

Page 15

#### - Smooth Hinge

Page 11

#### - T Hinge

Pages 7-11

### HL Hinge

Page 13

### Hook & Band Hinge

Page 9

### Hooks

#### - Cabin

Page 74

#### - Coat

Page 72

#### - Cup

Page 73

#### - Fleur De Lys

Page 71

#### - Gothic

Page 71

#### - Hat & Coat

Page 72

#### - Hook Plate

Page 82

#### - L Hook

Page 73

### Horizontal Sash Lock

Page 101

### I

### Iron Finish

Pages 5, 107

### J

### Joining Bar

Page 99

### K

### Keep

#### - Angled

Page 68

#### - Door

Pages 20, 51

#### - Pin

Page 20

#### - Ventable Keep Plate

Page 104

### Knobs

#### - Cabinet & Cupboard

Pages 76-79

#### - Door

Pages 46-49

#### Knob Bolt

Pages 67, 69

#### Knocker

#### - Pear

Page 58

#### - Ring

Page 58

### L

### L Hooks

Page 73

### Latch

#### - Cabinet

Page 80

#### - Cottage

Page 21

#### - Heavy Duty

Page 102

#### - Privacy

Page 22

#### - Set

Page 22

#### - Shakespeare

Page 23

#### - Thumb

Pages 16-20

#### - Tubular Mortice

Page 101

### Leaf Finial

Page 98

### Letterplates

Pages 59-61

### Letterplate Cover

Page 60

### Lever Handles

#### - Avon

Pages 32-33

#### - Cottage

Page 29

#### - Cromwell

Page 38

#### - Curly

Page 27

#### - Gothic

Pages 34-35

#### - Gothic Curved

Page 36

#### - Monkeytail

Page 28

#### - Narrow

Page 32

#### - Oak

Page 30

#### - Smooth

Page 30

#### - Straight

Page 31

#### - Tudor

Page 37

### Locking Staple Pin

Page 20

### Locking Window Fastener

Pages 84-85

### Locks, Latches & Accessories

Pages 100-104

### Locks

#### - Bathroom Mortice Lock

Page 101-102

#### - Box

Page 51

#### - Euro Cylinder

Page 102

#### - Euro Cylinder Thumbturn

Page 102

#### - Euro DIN Sash Case

Page 103

#### - Euro Sash Lock

Page 102

#### - Heavy Duty Sash Lock

Page 102

#### - Heavy Duty Tubular Deadbolt

Page 103

#### - Horizontal Sash Lock

Page 101

#### - Rim

Pages 50-53

#### - Sash Lock (Standard)

Page 101

#### - Window Lock

Page 104

#### - 3 Point Door Lock

Page 103

#### - 5 Lever Deadlock BS

Page 103

#### - 5 Lever Heavy Duty Sash Lock BS

Page 102

#### - 5 Lever Sash Lock BS

Page 101

### M

### Maintenance

Pages 5-6, 107

### Maintenance Wax

Page 107

### Monkeytail

#### - Espagnolette

Pages 94-95

#### - Fastener

Pages 83-84

#### - Lever Handles

Page 28

#### - Stays

Pages 88-89

### Mortice Latch

Pages 101-103

### Mortice Lock

Pages 101-104

### Mortice Plate

Page 82

### Mortice Knob Sets

Page 49

### Mortice/Rim Knob Sets

#### - Bun

Page 48

#### - Mushroom

Page 48

#### - Octagonal

Page 47



- **Oval**  
Page 47
- **Ringed**  
Page 48
- **Round**  
Page 47
- Mounting Bracket**  
Page 99

## N

- Nails**
- **Handmade**  
Page 63
- **Rosehead**  
Page 63
- Narrow Lever Handle**  
Page 32
- Narrow Spring Unit Cassette**  
Page 104
- Natural Smooth Finish**  
Pages 5, 107
- Natural Textured Finish**  
Pages 5, 107
- Night Vent Fastener**  
Page 84

## O

- Oak Box Lock**  
Page 51
- Oak Lever Handles**  
Page 30
- Octagonal Mortice/Rim Knob**  
Page 47
- Octagonal Cabinet Knob**  
Page 77
- Offset Stay Pin**  
Page 89
- Ornate Hinge**  
Page 15
- Oval Escutcheon**  
Page 55
- Oval Escutcheon & Cover**  
Page 55
- Oval Knob**  
Page 77
- Oval Mortice/Rim Knob Set**  
Page 47

## P

- Peardrop**
- **Espagnolette**  
Pages 92-93
- **Fastener**  
Page 82
- **Stays**  
Page 87
- Pear Shaped Door Knocker**  
Page 58
- Penny End**
- **T Hinges**  
Pages 7-8
- **Screw-on-staple**  
Page 20
- Pewter**
- **Antique Finish**  
Pages 5, 107
- **Patina Finish**  
Pages 4, 107



- Pin**
- **Frame Keep**  
Page 20
- **Locking Staple**  
Page 20
- **Staple**  
Page 20
- **Stay**  
Pages 87-90
- Plain Escutcheon**  
Page 56
- Plate**
- **Hook**  
Page 82
- **Mortice**  
Page 82
- **Ventable Keep**  
Page 104
- Poles, Curtain**  
Page 99
- Polished**
- **Brass**  
Pages 5, 107
- **Chrome**  
Pages 5, 107
- Postal Letterplate**  
Page 61
- Privacy Latch Set**  
Page 22
- Product Finishes**  
Pages 4-5, 107
- Pulls**
- **Cabinet Handles**  
Page 45
- **D Handles**  
Pages 40-44
- **Drawer**  
Pages 40-45
- **Drop Handles**  
Page 45
- Pyramid Door Studs**  
Page 64

## R

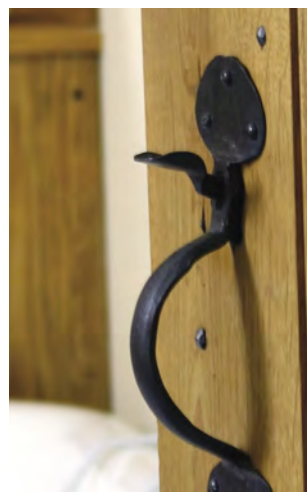
- Raised Door Grill**  
Page 64
- Ribbed**
- **Cabinet Knob**  
Page 77
- **Pull Handles**  
Page 44
- Rim Knob Set**  
Pages 47-48
- Rim Lock**  
Pages 50-53
- Ring, Curtain**  
Page 99
- Ring Door Knocker**  
Page 58
- Ringed Mortice/Rim Knob Set**  
Page 48
- Ring Turn**
- **Handle**  
Page 25
- **Shakespeare**  
Page 25
- Rosehead Nail**  
Page 63



- Rosewood Finish**  
Pages 5, 107
- Round Mortice/Rim Knob Set**  
Page 47

## S

- Sash Locks**  
Pages 101-103
- Screws**  
Page 107
- Screw-on-staple**
- **Bean**  
Page 20
- **Gothic**  
Page 20
- Shakespeare**
- **Latch**  
Page 23
- **Ring Turn**  
Page 25
- Shell**
- **Finials**  
Page 98
- **Pull Handles**  
Page 43
- Shepherd's Crook**
- **Fasteners**  
Page 85
- **Espagnolette**  
Page 96
- **Stays**  
Page 90
- Shutter Hinge**  
Page 15
- Slide Bolt**  
Page 69
- Slim Monkeytail**
- Espagnolette**  
Page 95
- Slim Thumbblatch**  
Page 18
- Smooth**
- **Lever Handle**  
Page 30
- **T Hinge**  
Page 11
- Sockets, Electrical**  
Page 106
- Spindle**
- **Taylor's**  
Page 104
- **Threaded, Spare**  
Page 107
- Spiral Cabinet Knob**  
Page 79
- Spring Unit Cassette**  
Page 104
- Staple Pin**  
Page 20
- Stay Pin**  
Pages 87-90
- Stay, Window**
- **Monkeytail**  
Pages 88-89
- **Peardrop**  
Page 87
- **Shepherd's Crook**  
Page 90



- Stockist, Find A**  
Page 108
- Straight**
- **Bolts**  
Pages 66-69
- **Lever Handles**  
Page 31
- Studs**  
Page 64
- Supply Policy**  
Page 108
- Switches, Electrical**  
Page 106

## T

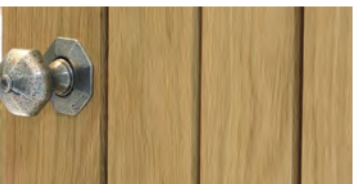
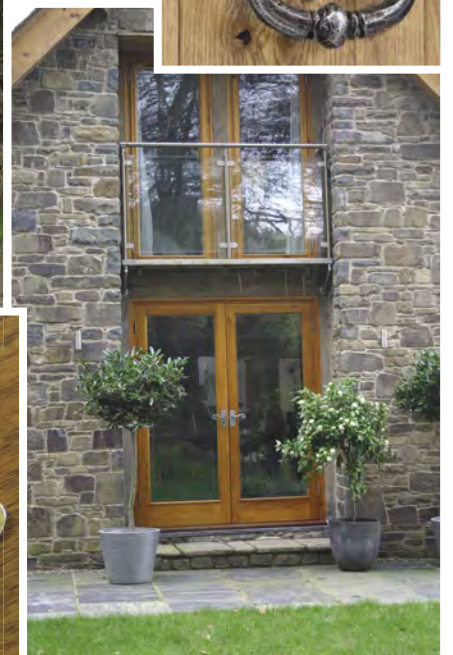
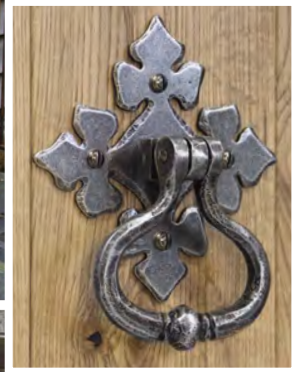
- T Hinges**
- **Arrow Head**  
Pages 9-11
- **Penny End**  
Pages 7-8
- Taylor's Spindles**  
Page 104
- Threaded Spindles**  
Page 107
- Thumbblatch**
- **Accessories**  
Page 20
- **Bean**  
Pages 17-18
- **Gothic**  
Page 19
- **Slim**  
Page 18
- **Spares**  
Page 20
- Thumbturn**  
Page 56
- Tudor Lever Handles**  
Page 37
- Turns**
- **Cupboard**  
Page 80
- **Ring**  
Pages 24-25
- Tubular Deadbolt**  
Page 103
- Tubular Mortice Latch**  
Page 101
- Twist Knob**  
Page 77

## V

- Ventable Keep Plate**  
Page 104

## W

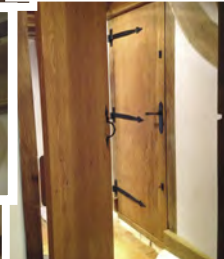
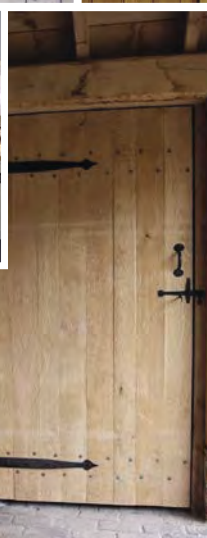
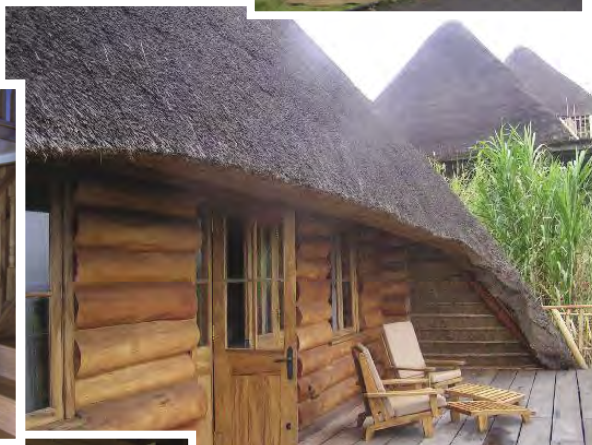
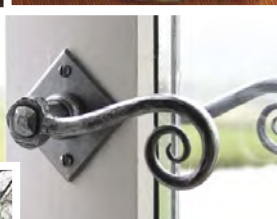
- Window**
- **Accessories**  
Pages 82, 87-90
- **Espagnolette Handles**  
Pages 91-96
- **Fasteners**  
Pages 81-85
- **Furniture**  
Pages 81-96
- **Locks & Accessories**  
Page 104
- **Stays**  
Pages 86-90
- Wax, Maintenance**  
Page 107





## FOCUS ON THE ANVIL

*Some of our customers entries into the 'Focus on the Anvil Photography Competition' with the winner being voted for by the public and winning £1000!*





*O*wning a period property can be very rewarding but restoration and repair can often be a daunting challenge.

*Maintaining that feel of authenticity you originally fell in love with using modern, mass-produced fixtures and fittings is almost impossible.*

*All our items are hand-forged by master craftsmen using traditional English blacksmithing methods.*

*The designs are based on timeless classics but hand-forging means no two pieces are identical, each one a unique yet functional work of art that will only enhance it's setting.*

*We hope you enjoy our new 'From The Anvil' ironmongery collection.*

From the  
**Anvil**<sup>®</sup>  
[www.fromtheanvil.co.uk](http://www.fromtheanvil.co.uk)



[www.fromtheanvil.co.uk](http://www.fromtheanvil.co.uk)



33 DDOLLE ENTERPRISE PARK, LLANDRINDOD WELLS, POWYS LD1 6DF.  
INFO@FROMTHEANVIL.CO.UK - TEL: 01597 823822 - FAX: 01597 823821