



## STEEL LINE



m.marcus  
architectural hardware



**14** PR-TB10



**14** PR-ARC9



**15** PR-MT03



**20** Thumbtuns



**15** PR-US01



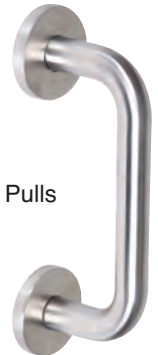
**16** SS-101



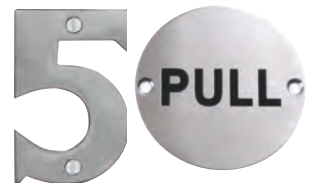
**16** SS-401



**21-23** Pulls



**24-25** Numerals & Signs



**17** SS-451



**17** SS-551



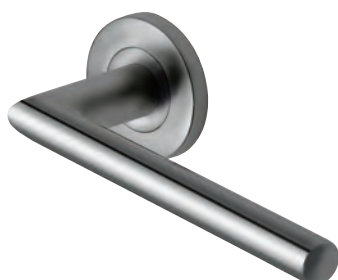
**18** SS-601



**26** Stops, Hooks, Pulls



**18** SS-651



**19** SS-701



**27** Finger plates  
Cylinder Pulls

**28-29** Hinges



The durability of stainless steel, an attractive minimalist look and contemporary design, makes this collection perfect for total harmonisation with other fixtures or fittings.



## CONTRACT LEVERS ON ROSE

Steel Levers on this page have a pressed steel fixing rose with push on rose cover



m.marcus  
architectural hardware

### PR-TB10

53mm Diameter  
135mm Total Length  
68mm Projection



FD30/60



### PR-ARC9

53mm Diameter  
140mm Total Length  
68mm Projection



FD30/60



## CONTRACT LEVERS ON ROSE

Steel Levers on this page have a pressed steel fixing rose with push on rose cover



m.marcus  
architectural hardware

### PR-MT03

53mm Diameter  
135mm Total Length  
68mm Projection



FD30/60



### PR-US01

53mm Diameter  
140mm Total Length  
65mm Projection



FD30/60





## LEVERS ON ROSE

Steel Levers on this page have a solid cast steel fixing rose with threaded rose cover



m.marcus  
architectural hardware



### SS-101

53mm Diameter  
125mm Total Length  
65mm Projection



FD30/60



### SS-401

53mm Diameter  
133mm Total Length  
65mm Projection



FD30/60

## LEVERS ON ROSE

Steel Levers on this page have a solid cast steel fixing rose with threaded rose cover



m.marcus  
architectural hardware



### SS-451

53mm Diameter  
110mm Total Length  
55mm Projection



FD30/60



### SS-551

53mm Diameter  
133mm Total Length  
65mm Projection



FD30/60

## LEVERS ON ROSE

Steel Levers on this page have a solid cast steel fixing rose with threaded rose cover



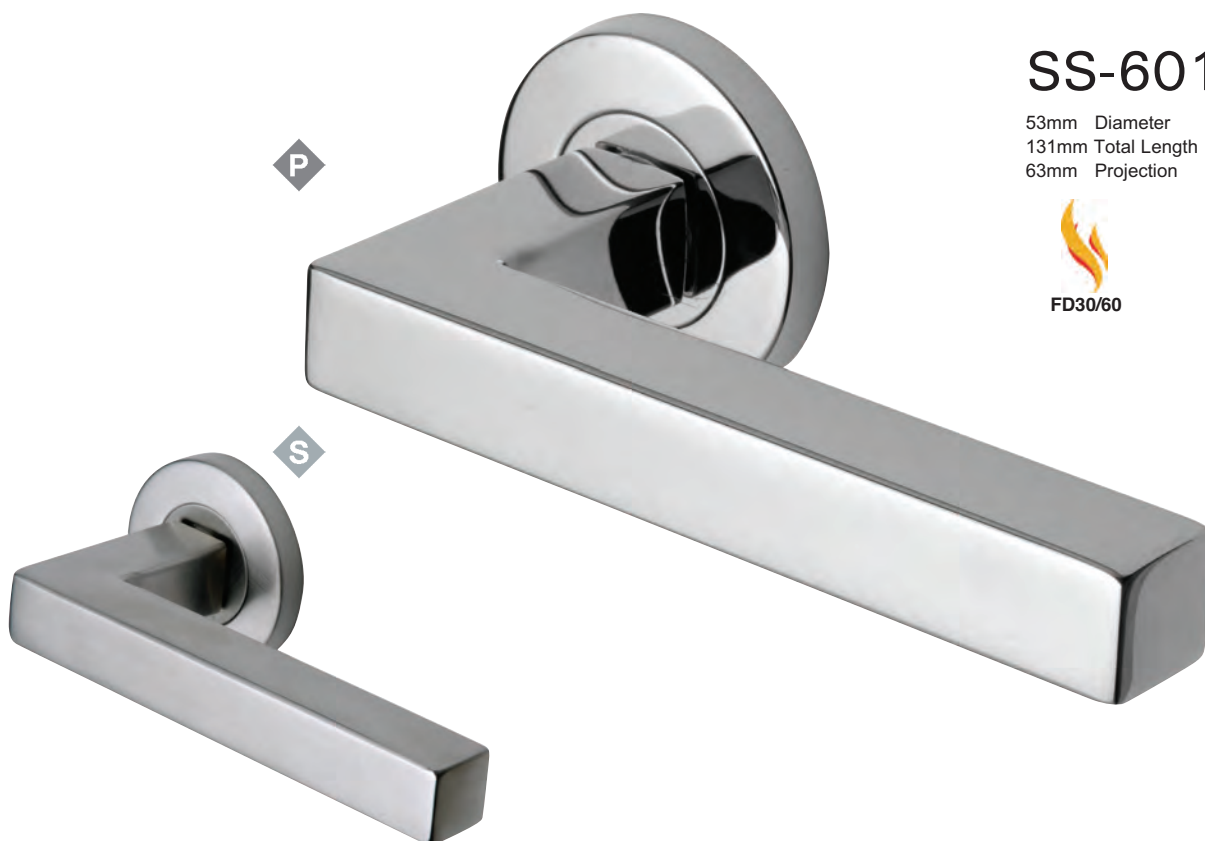
m.marcus  
architectural hardware

### SS-601

53mm Diameter  
131mm Total Length  
63mm Projection



FD30/60



### SS-651

53mm Diameter  
133mm Total Length  
65mm Projection



FD30/60



## LEVERS ON ROSE

Steel Levers on this page have a solid cast steel fixing rose with threaded rose cover



m.marcus  
architectural hardware



### SS-701

53mm Diameter  
133mm Total Length  
65mm Projection



FD30/60







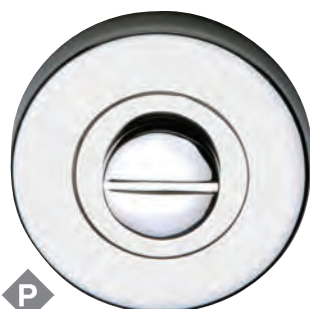
P



**SS-895D**  
**Snib & Release**  
*Diameter 53mm*



S



P



**SS-895**  
**Snib & Release**  
*Diameter 53mm*



S



P

**SS-890**  
**Keyhole Escutcheon**  
*Diameter 53mm*



S



P

**SS-891**  
**Euro Escutcheon**  
*Diameter 53mm*



S

## PULL HANDLES

Large Entrance Pull Handle (Bolt Fix & Back to Back)



m.marcus  
architectural hardware

S

### SS-316 STEEL TYPE 316

CODE	DESCRIPTION	TUBE Dia.	LENGTH	C to C
SS-T250001-S	T Pull Bolt Fix	25mm	720mm	600mm
SS-T250002-S	T Pull Bolt Fix	25mm	1120mm	1000mm
SS-T320004-S	T Pull Bolt Fix	32mm	1400mm	1200mm
SS-T320005-S	T Pull Bolt Fix	32mm	2000mm	1800mm
SS-T250001R-S	T Pull Back to Back	25mm	720mm	600mm
SS-T250002R-S	T Pull Back to Back	25mm	1120mm	1000mm
SS-T320004R-S	T Pull Back to Back	32mm	1400mm	1200mm
SS-T320005R-S	T Pull Back to Back	32mm	2000mm	1800mm

*Back to Back Pulls supplied as a pair*

## PULL HANDLES

### Bolt Fix Pull Handle



m.marcus  
architectural hardware



## SS-304 19mm DIAMETER STEEL TYPE 304

CODE	DESCRIPTION	TUBE Dia.	C to C	FINISH
SS-D190001-S	Bolt Fix	19mm	150mm	Satin
SS-D190002-P	Bolt Fix	19mm	150mm	Polished
SS-D190003-S	Bolt Fix	19mm	225mm	Satin
SS-D190004-P	Bolt Fix	19mm	225mm	Polished
SS-D190005-S	Bolt Fix	19mm	300mm	Satin
SS-D190006-P	Bolt Fix	19mm	300mm	Polished
SS-D190007-S	Bolt Fix	19mm	425mm	Satin
SS-D190008-P	Bolt Fix	19mm	425mm	Polished
SS-D190009-S	Bolt Fix	19mm	600mm	Satin
SS-D190010-P	Bolt Fix	19mm	600mm	Polished



## SS-304 22mm DIAMETER STEEL TYPE 304

CODE	DESCRIPTION	TUBE Dia.	C to C	FINISH
SS-D220001-S	Bolt Fix	22mm	150mm	Satin
SS-D220002-P	Bolt Fix	22mm	150mm	Polished
SS-D220003-S	Bolt Fix	22mm	225mm	Satin
SS-D220004-P	Bolt Fix	22mm	225mm	Polished
SS-D220005-S	Bolt Fix	22mm	300mm	Satin
SS-D220006-P	Bolt Fix	22mm	300mm	Polished
SS-D220007-S	Bolt Fix	22mm	425mm	Satin
SS-D220008-P	Bolt Fix	22mm	425mm	Polished
SS-D220009-S	Bolt Fix	22mm	600mm	Satin
SS-D220010-P	Bolt Fix	22mm	600mm	Polished

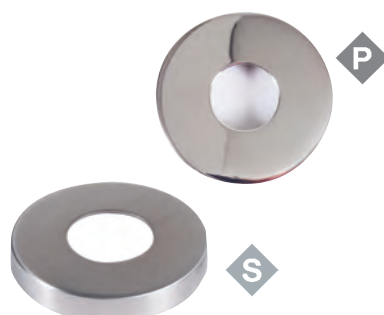
## SS-316 22mm DIAMETER STEEL TYPE 316

CODE	DESCRIPTION	TUBE Dia.	C to C	FINISH
SS-D220105-S	Bolt Fix	22mm	300mm	Satin
SS-D220106-P	Bolt Fix	22mm	300mm	Polished
SS-D220107-S	Bolt Fix	22mm	425mm	Satin
SS-D220108-P	Bolt Fix	22mm	425mm	Polished
SS-D220109-S	Bolt Fix	22mm	600mm	Satin
SS-D220110-P	Bolt Fix	22mm	600mm	Polished

*Bolt fixing pull handles are supplied with bolt through fixings only.*

*Optional fixing packs as illustrated are available to purchase separately, supplied with rose cover & under-rose in steel, concealed fixings & Allen key.*

*See below for details.*



### CONCEALED FIXING PACKS

CODE	DIAMETER	DEPTH.	FOR TUBE	FINISH
SS-D190021-S	53mm	8mm	19mm	Satin
SS-D190022-P	53mm	8mm	19mm	Polished
SS-D220021-S	53mm	8mm	22mm	Satin
SS-D220022-P	53mm	8mm	22mm	Polished

## PULL HANDLES

Back to Back Fixing



m.marcus  
architectural hardware

### SS-304 19mm DIAMETER STEEL TYPE 304

CODE	DESCRIPTION	TUBE Dia.	C to C	FINISH
SS-D190011-S	Back to Back	19mm	150mm	Satin
SS-D190012-P	Back to Back	19mm	150mm	Polished
SS-D190013-S	Back to Back	19mm	225mm	Satin
SS-D190014-P	Back to Back	19mm	225mm	Polished
SS-D190015-S	Back to Back	19mm	300mm	Satin
SS-D190016-P	Back to Back	19mm	300mm	Polished
SS-D190017-S	Back to Back	19mm	425mm	Satin
SS-D190018-P	Back to Back	19mm	425mm	Polished
SS-D190019-S	Back to Back	19mm	600mm	Satin
SS-D190020-P	Back to Back	19mm	600mm	Polished

### SS-304 22mm DIAMETER STEEL TYPE 304

CODE	DESCRIPTION	TUBE Dia.	C to C	FINISH
SS-D220011-S	Back to Back	22mm	150mm	Satin
SS-D220012-P	Back to Back	22mm	150mm	Polished
SS-D220013-S	Back to Back	22mm	225mm	Satin
SS-D220014-P	Back to Back	22mm	225mm	Polished
SS-D220015-S	Back to Back	22mm	300mm	Satin
SS-D220016-P	Back to Back	22mm	300mm	Polished
SS-D220017-S	Back to Back	22mm	425mm	Satin
SS-D220018-P	Back to Back	22mm	425mm	Polished
SS-D220019-S	Back to Back	22mm	600mm	Satin
SS-D220020-P	Back to Back	22mm	600mm	Polished

### SS-316 22mm DIAMETER STEEL TYPE 316

CODE	DESCRIPTION	TUBE Dia.	C to C	FINISH
SS-D220115-S	Back to Back	22mm	300mm	Satin
SS-D220116-P	Back to Back	22mm	300mm	Polished
SS-D220117-S	Back to Back	22mm	425mm	Satin
SS-D220118-P	Back to Back	22mm	425mm	Polished
SS-D220119-S	Back to Back	22mm	600mm	Satin
SS-D220120-P	Back to Back	22mm	600mm	Polished





# NUMERALS

Screw Fixing 76mm 3"



m.marcus  
architectural hardware



SS-1560-0-S  
SS-1560-0-P

Satin  
Polished



SS-1560-1-S  
SS-1560-1-P

Satin  
Polished



SS-1560-2-S  
SS-1560-2-P

Satin  
Polished



SS-1560-3-S  
SS-1560-3-P

Satin  
Polished



SS-1560-4-S  
SS-1560-4-P

Satin  
Polished



SS-1560-5-S  
SS-1560-5-P

Satin  
Polished



SS-1560-6-S  
SS-1560-6-P

Satin  
Polished



SS-1560-7-S  
SS-1560-7-P

Satin  
Polished



SS-1560-8-S  
SS-1560-8-P

Satin  
Polished



SS-1560-9-S  
SS-1560-9-P

Satin  
Polished

## SIGNS & SYMBOLS

All 76mm Diameter



m.marcus  
architectural hardware



SS-SIGN001-S  
SS-SIGN002-P

Satin  
Polished



SS-SIGN009-S  
SS-SIGN010-P

Satin  
Polished



SS-SIGN011-S  
SS-SIGN012-P

Satin  
Polished



SS-SIGN007-S  
SS-SIGN008-P

Satin  
Polished



SS-SIGN017-S  
SS-SIGN018-P

Satin  
Polished



SS-SIGN015-S  
SS-SIGN016-P

Satin  
Polished



SS-SIGN021-S  
SS-SIGN022-P

Satin  
Polished



SS-SIGN019-S  
SS-SIGN020-P

Satin  
Polished



SS-SIGN013-S  
SS-SIGN014-P

Satin  
Polished



SS-SIGN023-S  
SS-SIGN024-P

Satin  
Polished



SS-SIGN003-S  
SS-SIGN004-P

Satin  
Polished



SS-SIGN005-S  
SS-SIGN006-P

Satin  
Polished

# DOOR STOPS - HOOKS - FLUSH BOLTS AND PULLS



H 85mm  
Max Dia. 46mm Min Dia. 19mm



SS-STOP007-S Concealed Fix Satin  
SS-STOP008-P Concealed Fix Polished

H 40mm  
Max Dia. 35mm  
Min Dia. 30mm



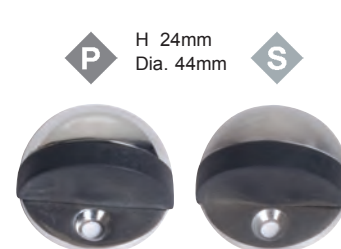
SS-STOP003-S Flat Satin  
SS-STOP004-P Flat Polished

H 51mm  
Max Dia. 35mm  
Min Dia. 30mm



SS-STOP005-S Domed Satin  
SS-STOP006-P Domed Polished

H 24mm  
Dia. 44mm



SS-STOP001-S Shielded Satin  
SS-STOP002-P Shielded Polished



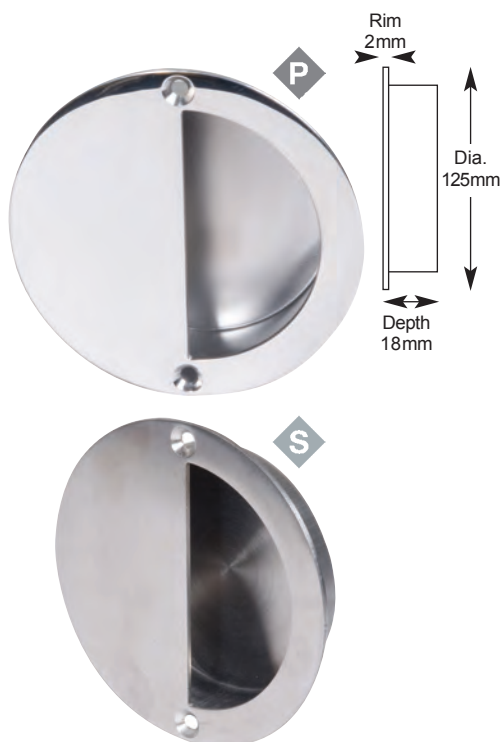
SS-HOOK005-S Buffered Hat & Coat Satin  
SS-HOOK006-P Buffered Hat & Coat Polished



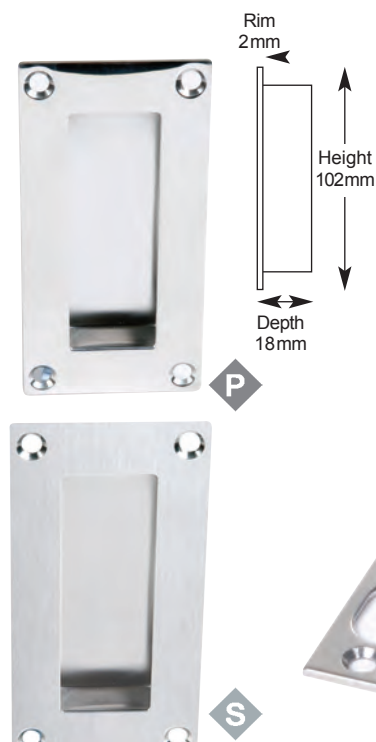
SS-HOOK003-S Hat & Coat Satin  
SS-HOOK004-P Hat & Coat Polished



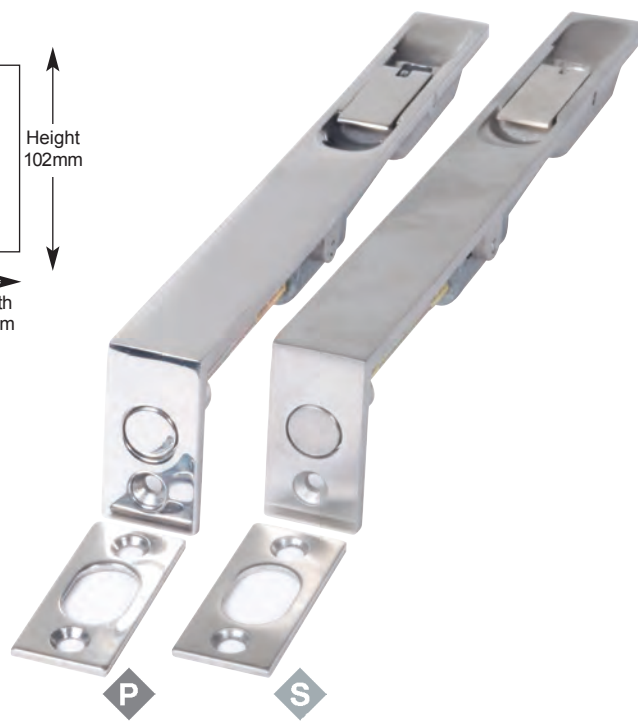
SS-HOOK001-S Hat & Coat Satin  
SS-HOOK002-P Hat & Coat Polished



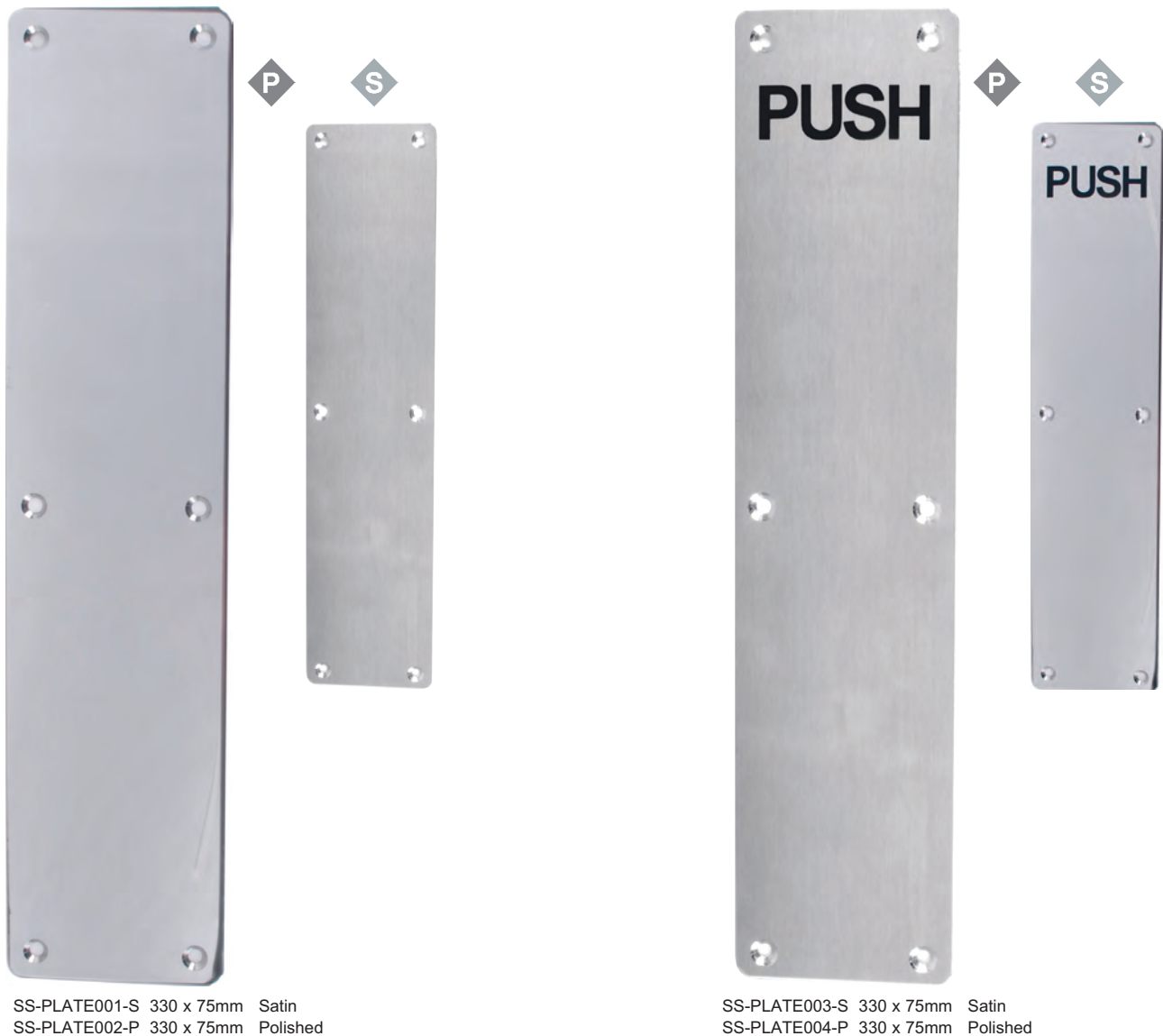
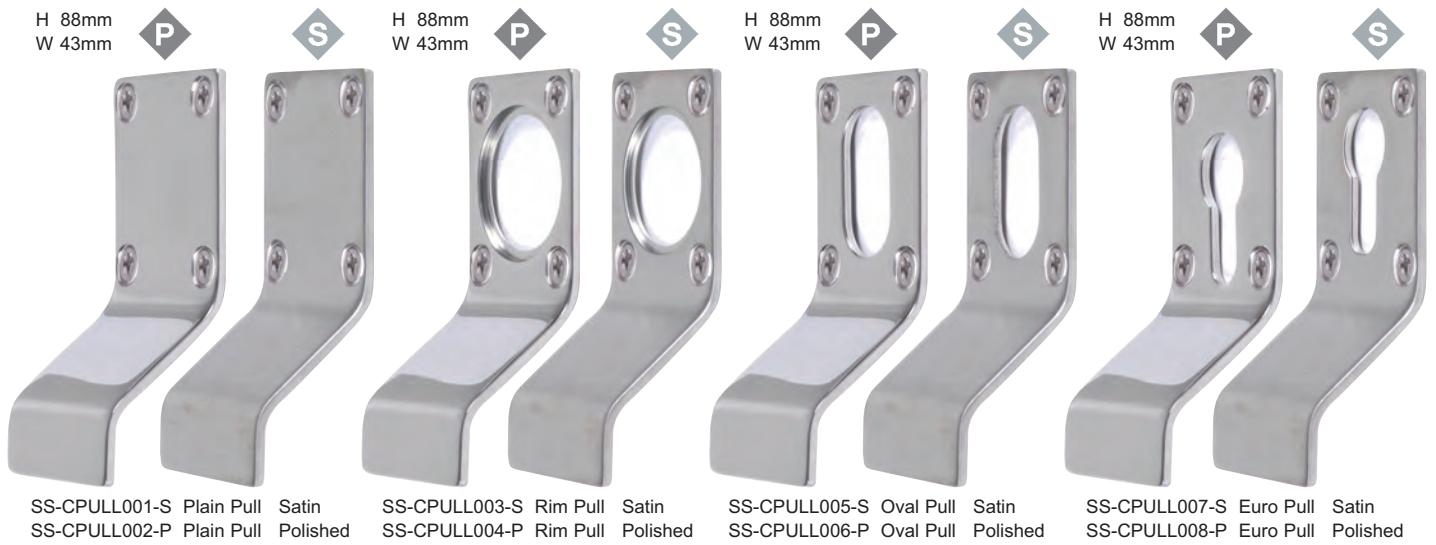
SS-FPULL001-S Circular Flush Pull Satin  
SS-FPULL002-P Circular Flush Pull Polished



SS-FPULL003-S 51mm Wide Flush Pull Satin  
SS-FPULL004-P 51mm Wide Flush Pull Polished



SS-FBOLT001-S Flush Bolt 203 x 19mm Satin  
SS-FBOLT002-P Flush Bolt 203 x 19mm Polished





1. Category of use	2. Durability	3. Test door mass	4. Suitability for fire/smoke door use	5. Safety	6. Corrosion resistance	7. Security	8. Hinge grade
4	7	6	1	1	4	1	13

**Digit 1****Category of use**

Four categories of use are identified:

- Grade 1: light duty
- Grade 2: medium duty
- Grade 3: heavy duty
- Grade 4: severe duty

**Digit 2****Durability**

- grade 3: 10 000 test cycles, for light duty hinges on windows only
- grade 4: 25 000 test cycles, for light duty hinges on windows and doors
- grade 7: 200 000 test cycles, for medium, heavy and severe duty hinges on doors only

**Digit 3****Test door mass**

Eight door mass grades related to single-axis hinges are identified in this European standard as shown in table *Figure 1*

Test door mass grade	Door mass
0	10 kg
1	20 kg
2	40 kg
3	60 kg
4	80 kg
5	100 kg
6	120 kg
7	160 kg

*Figure 1***Digit 4****Suitability for fire/smoke door use**

- Two grades of suitability are identified for single-axis hinges:
- Grade 0: not suitable for fire/smoke resistant door assemblies
- Grade 1: suitable for fire/smoke resistant door assemblies subject to satisfactory assessment of the contribution of the single-axis hinge to the fire resistance of the specified fire/smoke door assemblies. Such assessment is beyond the scope of this European standard (see EN 1634-1).

**Digit 5****Safety**

Single-axis hinges are required to satisfy the essential requirements of safety in use. Therefore, only grade 1 is identified.

**Digit 6****Corrosion resistance**

- Five grades of corrosion resistance are identified in accordance with EN 1670:
- Grade 0: no defined corrosion resistance.
- Grade 1: mild resistance.
- Grade 2: moderate resistance.
- Grade 3: high resistance.
- Grade 4: very high resistance.

**Digit 7****Security**

- Two grades of security are identified for single-axis hinges:
- Grade 0: not suitable for use on burglar-resistant door assemblies
- Grade 1: suitable for applications requiring a degree of security.

**Digit 8****Hinge grade**

Fourteen grades are identified. 1-14 in table *Figure 2*

Hinge grade	Usage	Test cycles	Door mass
1	Window	10 000	10 kg
2	Window	10 000	20 kg
3	Window/Door	25 000	20 kg
4	Door	200 000	20 kg
5	Window	10 000	40 kg
6	Window/Door	25 000	40 kg
7	Door	200 000	40 kg
8	Window	10 000	60 kg
9	Window/Door	25 000	60 kg
10	Door	200 000	60 kg
11	Door	200 000	80 kg
12	Door	200 000	100 kg
13	Door	200 000	120 kg
14	Door	200 000	160 kg

*Figure 2*

## HINGES

Hinges are All Supplied with Fixing Screws



m.marcus  
architectural hardware



SS-4X33SS 4"x3"x3mm Ball Bearing Hinge (pair) Satin  
SS-4X33PS 4"x3"x3mm Ball Bearing Hinge (pair) Polished  
SS-4X33PVD 4"x3"x3mm Ball Bearing Hinge (pair) PVD Stainless Steel  
SS-4X331.5SS 4"x3"x3mm Ball Bearing Hinge (1.5 pair) Satin  
SS-4X331.5PS 4"x3"x3mm Ball Bearing Hinge (1.5 pair) Polished

BS EN 1935:2002 single axis hinges classification code.

4	7	6	1	1	4	0	13
---	---	---	---	---	---	---	----



SS-4X33RSS 4"x3"x3mm Ball Bearing Radius Corners (pair) Satin  
SS-4X33RPS 4"x3"x3mm Ball Bearing Radius Corners (pair) Polished  
SS-4X33RPVD 4"x3"x3mm Ball Bearing Radius Corners (pair) PVD Stainless Steel  
SS-4X331.5RSS 4"x3"x3mm Ball Bearing Radius Corners (1.5 pair) Satin  
SS-4X331.5RPS 4"x3"x3mm Ball Bearing Radius Corners (1.5 pair) Polished

BS EN 1935:2002 single axis hinges classification code.

4	7	6	1	1	4	0	13
---	---	---	---	---	---	---	----



SS-4X33DBSS 4"x3"x3mm Ball Bearing with security Dog Bolt Satin  
SS-4X33DBPS 4"x3"x3mm Ball Bearing with security Dog Bolt Polished  
SS-4X33DBPVD 4"x3"x3mm Ball Bearing with security Dog Bolt PVD Stainless Steel

BS EN 1935:2002 single axis hinges classification code.

4	7	6	1	1	4	1	13
---	---	---	---	---	---	---	----



SS-4X43SS 4"x4"x3mm Ball Bearing Hinges (pair) Satin  
SS-4X43PS 4"x4"x3mm Ball Bearing Hinges (pair) Polished  
SS-4X43PVD 4"x4"x3mm Ball Bearing Hinges (pair) PVD Stainless Steel  
SS-4X431.5SS 4"x4"x3mm Ball Bearing Hinges (1.5 pair) Satin  
SS-4X431.5PS 4"x4"x3mm Ball Bearing Hinges (1.5 pair) Polished

BS EN 1935:2002 single axis hinges classification code.

4	7	6	1	1	4	0	13
---	---	---	---	---	---	---	----



SS-3X22SS 3"x2"x2mm 2BB Satin  
SS-3X22PS 3"x2"x2mm 2BB Polished  
SS-3X22PVD 3"x2"x2mm 2BB PVD Stainless Steel

BS EN 1935:2002 single axis hinges classification code.

2	7	2	0	1	4	0	7
---	---	---	---	---	---	---	---

